

Cable fittings and accessories

Plastic elbow fitting AW-P

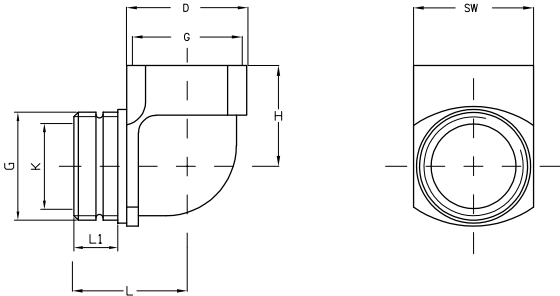


Properties

- Elbow fitting

Design

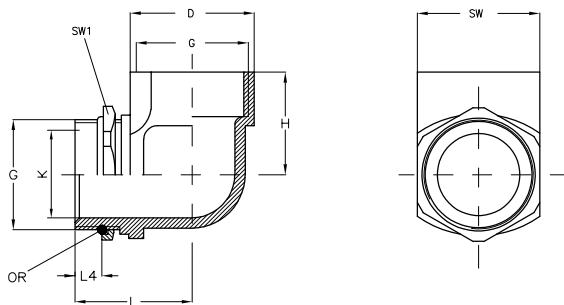
- Material Polyamide 6 GF 30
- Colour grey



Part-No.	Type	G	D mm	K mm	SW= across flats mm	L mm	L 1 mm	H mm	weight approx. kg/100 piece	VE piece
AW-P metric										
601071	AW-P M 16	M 16	19.0	11.0	19	24.0	13.0	21.0	0.83	loose
601072	AW-P M 20	M 20	25.0	15.0	25	29.0	15.0	24.0	1.48	loose
601073	AW-P M 25	M 25	30.0	20.0	30	33.0	16.0	28.0	2.25	loose
601074	AW-P M 32	M 32	36.0	26.0	36	38.0	17.0	31.0	3.32	loose
AW-P PG										
601250	AW-P PG 9	PG 9	19.0	10.0	19	23.0	11.0	21.0	0.66	loose
601252	AW-P PG 11	PG 11	22.0	13.0	22	25.0	12.0	21.5	0.79	loose
601254	AW-P PG 13.5	PG 13,5	24.0	14.0	24	27.0	12.0	24.0	1.04	loose
601255	AW-P PG 16	PG 16	27.0	17.0	27	29.5	13.0	25.0	1.35	loose
601257	AW-P PG 21	PG 21	32.0	22.0	32	34.5	15.0	30.0	2.14	loose
601258	AW-P PG 29	PG 29	41.0	29.0	41	38.5	15.0	34.5	3.48	loose

Cable fittings and accessories

Plastic elbow fitting AWK-P



Properties

- Elbow fitting with O-Ring seal and additional locking nut
- Direction of reduction continuously adjustable

Technical data

Protection class IP 65

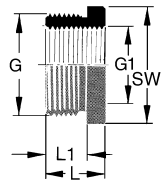
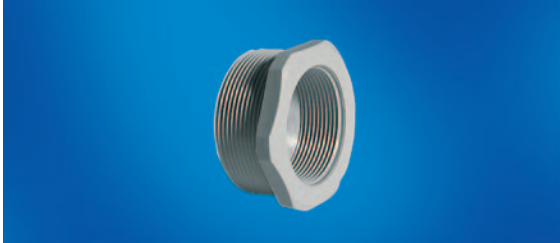
Design

- Material Polyamide 6 GF 30
- Colour grey
- O-Ring (OR) Neoprene
- Locking nut Polyamide 6 GF 30

Part-No.	Type	G	D mm	K mm	SW = across flats mm	SW 1 = across flats mm	L mm	L 4 mm	H mm	weight ap- prox. kg/100 pi- ece	VE piece
AWK-P metric											
601091	AWK-P M 16	M 16	19.0	10.0	19	21	23.0	7	21.0	0.96	loose
601092	AWK-P M 20	M 20	22.0	13.0	22	27	25.0	8	21.5	1.67	loose
601093	AWK-P M 25	M 25	24.0	14.0	24	30	27.0	7	24.0	2.31	loose
601094	AWK-P M 32	M 32	27.0	17.0	27	32	29.5	8	25.0	1.72	loose
AW-P PG											
600270	AWK-P PG 9	PG 9	19.0	10.0	19	22	23.0	7	21.0	0.92	loose
600271	AWK-P PG 11	PG 11	22.0	13.0	22	24	25.0	8	21.5	1.09	loose
600272	AWK-P PG 13.5	PG 13.5	24.0	14.0	24	27	27.0	7	24.0	1.56	loose
600273	AWK-P PG 16	PG 16	27.0	17.0	27	30	29.5	8	25.0	1.62	loose
600274	AWK-P PG 21	PG 21	32.0	22.0	32	36	34.5	9	30.0	2.98	loose
600275	AWK-P PG 29	PG 29	41.0	29.0	41	46	38.5	9	34.5	3.63	loose
600276	AWK-P PG 21	PG 21	32.0	22.0	32	36	34.5	9	30.0	2.98	loose

Cable fittings and accessories

Plastic accessory RR Form 1, metric



Properties

- - metric -
- - Form 1 -
- Reducing ring from plastic with large outer thread and small inner thread

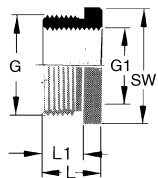
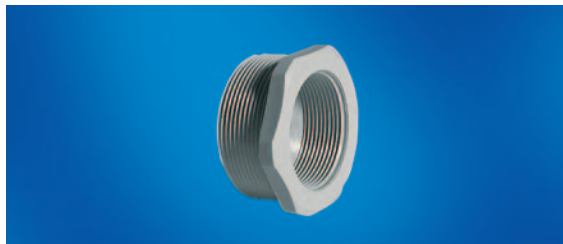
Design

- Material Polyamide PA 6 GF 30
- Colour Grey RAL 7035
- other colours upon request

Part-No.	Type	G	G1	SW = across flats mm	L mm	L 1 mm	weight approx. kg/100 piece	VE piece
RR-PA metric								
600550	RR-PA M 20/12	M 20	M 12	24	12.0	8.0	0.39	100
600551	RR-PA M 20/16	M 20	M 16	24	12.0	8.0	0.26	100
600552	RR-PA M 25/12	M 25	M 12	32	14.0	8.0	0.70	100
600553	RR-PA M 25/16	M 25	M 16	32	14.0	8.0	0.67	100
600554	RR-PA M 25/20	M 25	M 20	32	14.0	8.0	0.50	100
600555	RR-PA M 32/12	M 32	M 12	36	16.0	10.0	1.06	50
600556	RR-PA M 32/16	M 32	M 16	36	16.0	10.0	1.06	50
600557	RR-PA M 32/20	M 32	M 20	36	16.0	10.0	1.20	50
600558	RR-PA M 32/25	M 32	M 25	36	16.0	10.0	0.88	50
600559	RR-PA M 40/16	M 40	M 16	46	16.0	10.0	1.59	50
600560	RR-PA M 40/20	M 40	M 20	46	16.0	10.0	1.68	50
600561	RR-PA M 40/25	M 40	M 25	46	16.0	10.0	1.36	50
600562	RR-PA M 40/32	M 40	M 32	46	16.0	10.0	1.35	50
600563	RR-PA M 50/20	M 50	M 20	55	18.0	12.0	2.15	25
600564	RR-PA M 50/25	M 50	M 25	55	18.0	12.0	2.16	25
600565	RR-PA M 50/32	M 50	M 32	55	18.0	12.0	2.06	25
600566	RR-PA M 50/40	M 50	M 40	55	18.0	12.0	1.97	25
600567	RR-PA M 63/25	M 63	M 25	68	18.0	12.0	2.65	25
600568	RR-PA M 63/32	M 63	M 32	68	18.0	12.0	2.95	25
600569	RR-PA M 63/40	M 63	M 40	68	18.0	12.0	3.08	25
600570	RR-PA M 63/50	M 63	M 50	68	18.0	12.0	3.05	25

Cable fittings and accessories

Plastic accessories RR Form 1 PG



Properties

- - Form 1 -
- Reducing ring from plastic with large outer thread and small inner thread

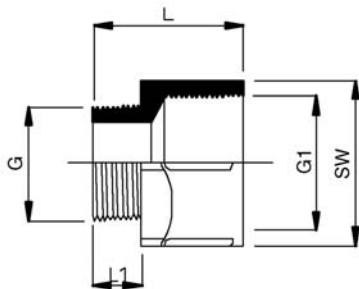
Design

- Material PolyamidePA 6 GF 30
- Colour grey RAL 7035
- other colours upon request

Part-No.	Type	G	G1	SW = across flats mm	L mm	L 1 mm	weight approx. kg/100 piece	VE piece
RR-PA PG Form 1								
600607	RR-PA PG 13/9	PG 13,5	PG 9	24	9.0	6.0	0.60	100
600604	RR-PA PG 21/16	PG 21	PG 16	32	16.0	11.0	0.99	100
600605	RR-PA PG 29/21	PG 29	PG 21	39	18.0	12.0	1.11	50
600606	RR-PA PG 36/29	PG 36	PG 29	50	24.0	18.0	2.50	50

Cable fittings and accessories

Plastic accessories RR Form 2



Properties

- - Form 2 -
- Reducing ring from plastic with large outer thread and small inner thread

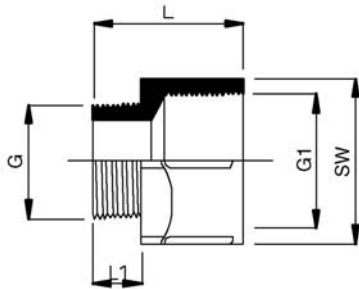
Design

- Material PolyamidePA 6 GF 30
- Colour grey RAL 7035
- other colours upon request

Part-No.	Type	G	G1	SW = across flats mm	L mm	L 1 mm	weight approx. kg/100 piece	VE piece
RR-PA PG Form 2								
600600	RR-PA PG 9/7	PG 9	PG 7	19	20.5	8.0	0.36	100
600601	RR-PA PG 11/9	PG 11	PG 9	22	22.5	8.0	0.55	100
600602	RR-PA PG 13.5/11	PG 13,5	Pg 11	24	24.0	9.0	0.60	50
600603	RR-PA PG 16/13.5	PG 16	PG 13,5	27	27.0	10.0	0.83	50

Cable fittings and accessories

Plastic accessory EW



Properties

- Plastic extension, from polyamide, fibre glass reinforced with small outer thread and large inner thread.

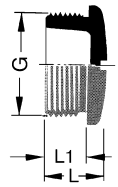
Design

- Material PolyamidePA 6 GF 30
- Colour grey RAL 7035
other colours upon request

Part-No.	Type	G	G1	SW = across flats mm	L mm	L 1 mm	weight approx. kg/100 piece	VE piece
EW-PA PG								
600351	EW-PA PG 7/9	PG 7	PG 9	19	20.5	8.0	0.27	100
600352	EW-PA PG 9/11	PG 9	PG 11	22	22.5	8.0	0.43	100
600353	EW-PA PG 11/13.5	PG 11	PG 13,5	24	24.0	8.0	0.54	100
600354	EW-PA PG 11/16	PG 11	PG 16	26	24.0	8.0	0.62	100
600355	EW-PA PG 13.5/16	PG 13,5	PG 16	27	27.0	9.0	0.68	100
600356	EW-PA PG 16/21	PG 16	PG 21	33	29.0	9.0	1.12	100
600357	EW-PA PG 21/29	PG 21	PG 29	43	33.0	10.0	1.43	50
600358	EW-PA PG 29/36	PG 29	PG 36	50	38.0	10.0	3.42	25
600359	EW-PA PG 36/42	PG 36	PG 42	60	40.0	12.5	3.68	10
600360	EW-PA PG 42/48	PG 42	PG 48	65	42.0	13.0	4.04	10

Cable fittings and accessories

Plastic accessory BL



Properties

- Blank plug according to DIN 46320

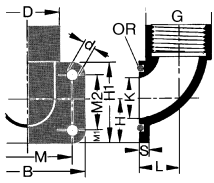
Design

- Material Polyamide PA 6 or polystyrene SB
- Colour grey RAL 7035
other colours upon request

Part-No.	Type	G	L mm	L 1 mm	weight approx. kg/100 piece	VE piece
BL metric PA						
600870	BL M 12	M 12	8.0	6.0	0.05	100
600871	BL M 16	M 16	9.0	6.0	0.09	100
600872	BL M 20	M 20	9.0	6.0	0.19	100
600873	BL M 25	M 25	10.5	7.0	0.20	100
600874	BL M 32	M 32	12.0	8.0	0.48	100
600875	BL M 40	M 40	13.0	9.0	0.66	50
600876	BL M 50	M 50	14.0	10.0	1.57	50
600877	BL M 63	M 63	17.0	12.0	2.26	50
BL PG PA						
601490	BL PG 7	PG 7	8.0	6.0	0.07	100
601491	BL PG 9	PG 9	9.0	6.0	0.13	100
601492	BL PG 11	PG 11	9.0	6.0	0.16	100
601493	BL PG 13.5	PG 13,5	9.5	6.0	0.20	100
601494	BL PG 16	PG 16	9.5	6.0	0.25	100
601495	BL PG 21	PG 21	11.0	8.0	0.38	100
601496	BL PG 29	PG 29	12.0	8.0	0.72	50
601497	BL PG 36	PG 36	15.0	10.0	1.15	25
BL PG SB						
600490	BL PG 7	PG 7	8.0	6.0	0.06	100
600491	BL PG 9	PG 9	9.0	6.0	0.12	100
600492	BL PG 11	PG 11	9.0	6.0	0.14	100
600493	BL PG 13.5	PG 13,5	9.5	6.0	0.19	100
600494	BL PG 16	PG 16	9.5	6.0	0.20	100
600495	BL PG 21	PG 21	11.0	8.0	0.34	100
600496	BL PG 29	PG 29	12.0	8.0	0.58	50
600497	BL PG 36	PG 36	15.0	10.0	1.15	25

Cable fittings and accessories

Metal flange elbow FW Form 1 after PG 16



Properties

- Flange elbow, waterproof
- O-Ring seal

Technical data

Protection class IP 65
Flange connection plate 46×32 mm (H1×B)

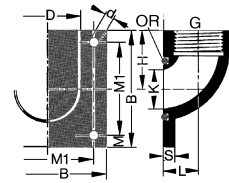
Design

- Material Zinc die-casting
- O-Ring (OR) Neoprene

Part-No.	Type	G	D mm	K mm	H mm	L mm	S mm	M mm	M1 mm	M2 mm	D mm	weight approx. kg/100 piece	VE piece
FW PG Form 1													
270089	FW PG 11	PG 11	26.0	16.0	18.0	15.0	3.0	36.0	5.0	22.0	4.5	12.00	loose
270090	FW PG 13.5	PG 13,5	26.0	16.0	18.0	15.0	3.0	36.0	5.0	22.0	4.5	13.00	loose
270091	FW PG 16	PG 16	26.0	16.0	18.0	15.0	3.0	36.0	5.0	22.0	4.5	14.00	loose

Cable fittings and accessories

Metal flange elbow FW Form 2 after PG 21



Properties

- Flange elbow, waterproof
- O-Ring seal

Technical data

Protection class IP 65

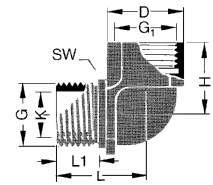
Design

- Material Aluminium chill casting
- O-Ring (OR) Neoprene

Part-No.	Type	G	D mm	K mm	B mm	H mm	L mm	S mm	M mm	M1 mm	D mm	weight approx. kg/100 piece	VE piece
FW metric Form 2													
270194	FW M 32	M 32	37.0	23.0	70.0	35.0	21.0	7.0	7.5	55.0	5.5	16.00	loose
270195	FW M 40	M 40	46.0	32.0	80.0	40.0	26.0	7.0	7.5	65.0	5.5	25.00	loose
270196	FW M 50	M 50	63.0	46.0	100.0	50.0	37.0	9.0	7.5	85.0	6.5	46.00	loose
270197	FW M 63	M 63	68.0	54.0	110.0	55.0	39.0	9.0	11.5	87.0	6.5	70.00	loose
FW PG Form 2													
270092	FW PG 21	PG 21	37.0	23.0	70.0	35.0	21.0	7.0	7.5	55.0	5.5	16.00	loose
270093	FW PG 29	PG 29	46.0	32.0	80.0	40.0	26.0	7.0	7.5	65.0	5.5	25.00	loose
270094	FW PG 36	PG 36	56.0	42.0	95.0	47.5	32.0	9.0	7.5	80.0	5.5	46.00	loose
270095	FW PG 42	PG 42	63.0	48.0	100.0	50.0	36.0	9.0	7.5	85.0	6.5	55.00	loose
270096	FW PG 48	PG 48	68.0	54.0	110.0	55.0	39.0	9.0	11.5	87.0	6.5	70.00	loose

Cable fittings and accessories

Metal connection elbow AW



Properties

- Elbow fitting, waterproof

Technical data

Protection class IP 55

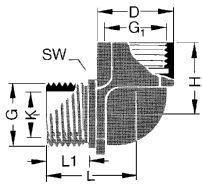
Design

- Material Zinc die-casting

Part-No.	Type	G	G1	D mm	K mm	SW = across flats mm	L mm	L 1 mm	H mm	weight ap- prox. kg/100 pi- ece	VE piece
AW PG											
600241	AW PG 9	PG 9	PG 9	19.0	10.0	19	23.0	11.0	21.0	3.18	50
600242	AW PG 9/11	PG 9	PG 11	22.0	10.0	22	25.0	11.0	21.5	4.00	50
600243	AW PG 11	PG 11	PG 11	22.0	13.0	22	25.0	12.0	21.5	4.05	50
600244	AW PG 11/16	PG 11	PG 16	27.0	13.0	27	28.5	12.0	16.3	7.00	50
600245	AW PG 13.5	PG 13,5	PG 13,5	24.0	14.0	24	27.0	12.0	24.0	5.26	50
600246	AW PG 16	PG 16	PG 16	27.0	17.0	27	29.5	13.0	25.0	6.60	50
600248	AW PG 21	PG 21	PG 21	32.0	22.0	32	34.5	15.0	30.0	9.80	25
600249	AW PG 29	PG 29	PG 29	41.0	29.0	41	38.5	15.0	34.5	1.67	loose

Cable fittings and accessories

Metal connection elbow AWK



Properties

- Elbow fitting, waterproof

Technical data

Protection class IP 55

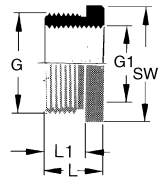
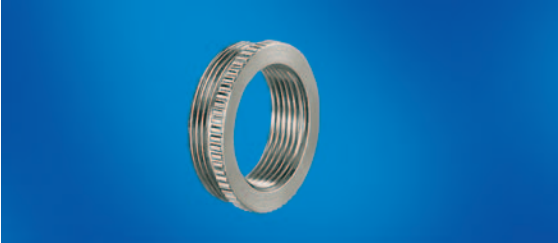
Design

- Material Zinc die-casting
- O-Ring (OR) Perbunan®
- Locking nut Brass

Part-No.	Type	G	D mm	K mm	SW = across flats mm	SW 1 = across flats mm	L mm	L 4 mm	H mm	weight approx. kg/100 piece	VE piece
AWK PG											
600261	AWK PG 9	PG 9	19.0	10.0	19	19	23.0	7	21.0	3.66	50
600263	AWK PG 11	PG 11	22.0	13.0	22	22	25.0	8	21.5	4.48	50
600265	AWK PG 13.5	PG 13,5	24.0	14.0	24	24	27.0	7	24.0	5.74	50
600266	AWK PG 16	PG 16	27.0	17.0	27	27	29.5	8	25.0	7.20	50
600268	AWK PG 21	PG 21	32.0	22.0	32	32	34.5	9	30.0	12.20	50
600269	AWK PG 29	PG 29	41.0	29.0	41	41	38.5	9	34.5	18.00	loose

Cable fittings and accessories

Metal accessory RR metric to PG



Properties

- Reducing ring from **metric to metric**
- Or **PG to PG** with large outer threads and small inner threads

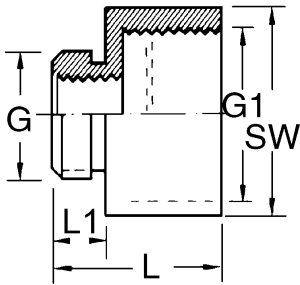
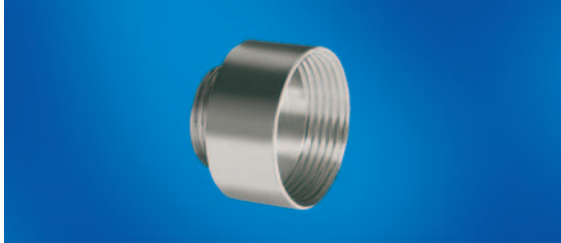
Design

- Material Brass nickel-plated

Part-No.	Type	G	G1	SW = across flats mm	L mm	L 1 mm	weight approx. kg/100 piece	VE piece
RR metric metric/metric								
600220	RR M 16/M 12	M 16	M 12	18	8.5	6.0	0.64	100
600221	RR M 20/M 12	M 20	M 12	24	9.0	6.5	1.57	100
600222	RR M 20/M 16	M 20	M 16	24	9.0	6.5	0.95	100
600223	RR M 25/M 16	M 25	M 16	28	10.0	7.0	2.70	100
600224	RR M 25/M 20	M 25	M 20	28	10.0	7.0	1.81	100
600225	RR M 32/M 20	M 32	M 20	34	11.5	8.0	4.62	50
600226	RR M 32/M 25	M 32	M 25	34	11.5	8.0	3.00	50
600227	RR M 40/M 25	M 40	M 25	45	11.5	8.0	7.60	50
600228	RR M 40/M 32	M 40	M 32	45	11.5	8.0	4.50	50
600229	RR M 50/M 32	M 50	M 32	55	14.0	10.0	13.00	25
600230	RR M 50/M 40	M 50	M 40	55	14.0	10.0	7.50	25
600231	RR M 63/M 40	M 63	M 40	64	14.0	10.0	21.50	10
600232	RR M 63/M 50	M 63	M 50	64	14.0	10.0	12.50	10
RR PG PG/PG								
600400	RR PG 9/PG 7	PG 9	PG 7	17	8.5	6.0	0.45	100
600411	RR PG 11/PG 7	PG 11	PG 7	20	8.5	6.0	1.20	100
600401	RR PG 11/PG 9	PG 11	PG 9	20	8.5	6.0	0.65	100
600408	RR PG 13.5/PG 9	PG 13,5	PG 9	22	9.0	6.5	1.01	100
600402	RR PG 13.5/PG 11	PG 13,5	PG 11	22	9.0	6.5	0.47	100
600409	RR PG 16/PG 9	PG 16	PG 9	24	9.5	6.5	0.85	100
600410	RR PG 16/PG 11	PG 16	PG 11	24	9.5	6.5	1.01	100
600403	RR PG 16/PG 13.5	PG 16	PG 13,5	24	9.5	6.5	0.59	100
600413	RR PG 21/PG 11	PG 21	PG 11	30	10.0	7.0	2.90	50
600414	RR PG 21/PG 13.5	PG 21	PG 13,5	30	10.0	7.0	1.23	50
600404	RR PG 21/PG 16	PG 21	PG 16	30	10.0	7.0	1.95	50
600407	RR PG 29/PG 16	PG 29	PG 16	39	11.5	8.0	6.42	25
600405	RR PG 29/PG 21	PG 29	PG 21	39	11.5	8.0	4.34	50
600412	RR PG 36/PG 21	PG 36	PG 21	50	21.5	9.0	11.40	25
600406	RR PG 36/PG 29	PG 36	PG 29	50	12.5	9.0	3.42	50
600416	RR PG 42/PG 36	PG 42	PG 36	57	14.0	10.0	7.00	25
600417	RR PG 48/PG 36	PG 48	PG 36	64	14.0	10.0	12.80	25
600415	RR PG 48/PG 42	PG 48	PG 42	64	14.0	10.0	6.40	25

Cable fittings and accessories

Metal accessory EW metric to PG



Properties

- Expansion from **metric to metric**
- Or **PG to PG** with small outer thread and large inner thread

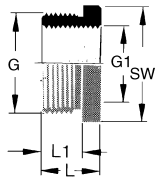
Design

- Material Brass nickel-plated

Part-No.	Type	G	G1	SW = across flats mm	L mm	L 1 mm	weight approx. kg/100 piece	VE piece
EW metric metric/metric								
600280	EW M 12/M 16	M 12	M 16	18	18.0	9.0	0.93	100
600281	EW M 16/M 20	M 16/20	M 12	22	33.0	10.0	1.39	100
600282	EW M 20/M 25	M 20	M 25	27	17.5	6.0	2.14	100
600283	EW M 25/M 32	M 25	M 32	34	19.5	7.0	3.10	100
600284	EW M 32/M 40	M 32	M 40	42	22.5	8.0	13.00	50
600285	EW M 40/M 50	M 40	M 50	52	27.5	8.0	16.30	50
600286	EW M 50/M 63	M 50	M 63	65	31.0	9.0	12.15	25
EW PG PG/PG								
600500	EW PG 7/PG 9	PG 7	PG 9	17	15.0	3.0	0.68	100
600501	EW PG 9/PG 11	PG 9	PG 11	20	16.5	6.0	0.84	100
600502	EW PG 9/PG 13.5	PG 9	PG 13,5	22	17.5	6.0	1.02	100
600503	EW PG 11/PG 13.5	PG 11	PG 13,5	22	17.5	6.0	1.18	100
600504	EW PG 11/PG 16	PG 11	PG 16	24	18.5	6.0	1.30	100
600506	EW PG 13.5/PG 16	PG 13,5	PG 16	24	19.0	6.5	1.34	100
600507	EW PG 13.5/PG 12	PG 13,5	PG 12	30	21.0	6.5	2.15	100
600508	EW PG 16/PG 21	PG 16	PG 21	30	21.0	6.5	2.44	50
600510	EW PG 21/PG 29	PG 21	PG 29	39	23.0	7.0	3.60	50
600511	EW PG 29/PG 36	PG 29	PG 36	50	27.5	8.0	7.44	25
600512	EW PG 36/PG 42	PG 36	PG 42	57	31.0	9.0	9.20	25
600513	EW PG 42/PG 48	PG 42	PG 48	64	33.0	10.0	14.40	25

Cable fittings and accessories

Metal accessory RR



Properties

- Metric to PG
- Reducing ring with large metric outer thread and small PG inner thread

Design

- Material Brass nickel-plated

Part-No.	Type	G	G1	SW = across flats mm	L mm	L 1 mm	weight approx. kg/100 piece	VE piece
RR M/PG metric/PG								
601000	RR M 16/PG 7	M 16	PG 7	18	8.5	6.0	0.53	100
601001	RR M 20/PG 9	M 20	PG 9	24	8.5	6.0	1.06	50
601002	RR M 25/PG 11	M 25	PG 11	28	10.0	7.0	1.98	50
601003	RR M 25/PG 13	M 25	PG 13	28	10.0	7.0	1.51	50
601004	RR M 25/PG 16	M 25	PG 16	28	10.0	7.0	0.80	50
601005	RR M 32/PG 16	M 32	PG 16	34	11.5	8.0	3.82	10
601006	RR M 32/PG 21	M 32	PG 21	45	11.5	8.0	1.62	10
601007	RR M 40/PG 21	M 40	PG 21	45	11.5	8.0	6.55	10
601008	RR M 50/PG 29	M 50	PG 29	55	12.5	9.0	9.45	5
601010	RR M 63/PG 42	M 63	PG 42	68	14.0	10.0	8.70	5

Cable fittings and accessories

Metal accessory EW

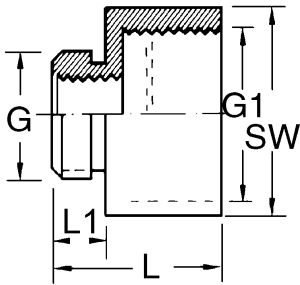


Properties

- Metric to PG
- Expansion with small metric outer thread and large PG inner thread

Design

- Material Brass nickel-plated



Part-No.	Type	G	G1	SW = across flats mm	L mm	L 1 mm	weight approx. kg/100 piece	VE piece
EW M/PG metric/PG								
601021	EW M 12/PG 9	M 12	PG 9	17	15.0	5.0	0.82	100
601022	EW M 16/PG 11	M 16	PG 11	20	16.5	6.0	0.86	100
601023	EW M 20/PG 16	M 20	PG 16	24	19.0	6.5	1.55	100
601024	EW M 25/PG 21	M 25	PG 21	30	21.0	6.5	2.52	100
601025	EW M 32/PG 29	M 32	PG 29	39	23.0	7.0	4.24	50
601026	EW M 40/PG 36	M 40	PG 36	50	27.5	8.0	8.40	50
601027	EW M 50/PG 42	M 50	PG 42	57	31.0	9.0	14.90	25
601028	EW M 50/PG 48	M 50	PG 48	64	32.0	9.0	15.90	25

Cable fittings and accessories

Metal accessory BLMS

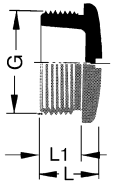


Properties

- Blank plug according to DIN 46320

Design

- Material Brass nickel-plated



Part-No.	Type	G	L mm	L 1 mm	weight approx. kg/100 piece	VE piece
BLMS metric						
600090	BLMS M 12	M 12	8.0	5.0	0.35	100
600091	BLMS M 16	M 16	9.0	6.0	0.55	100
600092	BLMS M 20	M 20	9.5	6.5	0.91	100
600093	BLMS M 25	M 25	11.0	7.0	1.92	100
600094	BLMS M 32	M 32	12.0	8.0	4.15	50
600095	BLMS M 40	M 40	12.0	8.0	3.96	50
600096	BLMS M 50	M 50	15.0	9.0	9.20	25
600097	BLMS M 63	M 63	16.0	10.0	16.90	10
BLMS PG						
600590	BLMS PG 7	PG 7	8.0	5.0	0.31	100
600591	BLMS PG 9	PG 9	9.0	6.0	0.49	100
600592	BLMS PG 11	PG 11	9.0	6.0	0.73	100
600593	BLMS PG 13.5	PG 13,5	9.5	6.5	0.86	100
600594	BLMS PG 16	PG 16	9.5	6.5	1.13	100
600595	BLMS PG 21	PG 21	11.0	7.0	2.06	100
600596	BLMS PG 29	PG 29	12.0	8.0	3.78	50
600597	BLMS PG 36	PG 36	15.0	9.0	5.67	50

Cable fittings and accessories

Plastic and metal accessories MFDE



Application

- For retroactive installation in our cable fittings Type Top T in plastic and brass, if necessary these are to be drilled yourself depending on needs
- PG 11 suitable for M 16
- PG 13.5 suitable for M 20
- PG 16 suitable for M 25
- PG 21 suitable for M 32

Properties

- Multiple sealing insert for two or more cables in a fitting

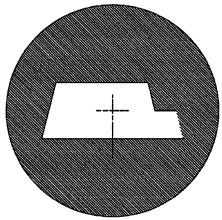
Design

- Material TPE

Part-No.	Type	Outer-Ø mm	Number of cables × Ø mm	weight approx. kg/100 piece	VE piece
MFDE PG					
600626	MFDE PG 9	10.0	2 × 3.0	0.57	100
600627	MFDE PG 9	10.0	4 × 3.0	0.46	100
600541	MFDE PG 9	10.0	0 × 0.0	0.70	100
600628	MFDE PG 11	13.0	2 × 4.0	1.00	100
600629	MFDE PG 11	13.0	2 × 4.5	0.80	100
600635	MFDE PG 11	13.0	3 × 4.0	0.10	100
600636	MFDE PG 11	13.0	3 × 5.0	0.70	100
600542	MFDE PG 11	13.0	0 × 0.0	0.11	100
600638	MFDE PG 13.5	15.0	2 × 4.5	1.32	100
600639	MFDE PG 13.5	15.0	2 × 5.0	1.20	100
600640	MFDE PG 13.5	15.0	2 × 6.0	1.20	100
600637	MFDE PG 13.5	15.0	3 × 4.0	1.40	100
600630	MFDE PG 13.5	15.0	3 × 5.0	1.20	100
600543	MFDE PG 13.5	15.0	0 × 0.0	1.60	100
600641	MFDE PG 16	17.0	2 × 4.0	2.00	100
600644	MFDE PG 16	17.0	2 × 6.0	1.78	100
600631	MFDE PG 16	17.0	3 × 4.0	1.92	100
600643	MFDE PG 16	17.0	3 × 5.0	1.60	100
600646	MFDE PG 16	17.0	4 × 6.0	1.20	100
600633	MFDE PG 16	17.0	5 × 4.0	1.62	100
600544	MFDE PG 16	17.0	0 × 0.0	2.30	100
600645	MFDE PG 16	17.0	3 × 6.0	1.00	100
600647	MFDE PG 16	17.0	3 × 6.5	1.20	100
600642	MFDE PG 16	17.0	4 × 4.0	1.73	100
600632	MFDE PG 16	17.0	4 × 5.0	1.20	100
600648	MFDE PG 21	22.0	2 × 7.0	3.60	100
600651	MFDE PG 21	22.0	2 × 8.0	3.20	100
600653	MFDE PG 21	22.0	2 × 9.0	3.20	100
600649	MFDE PG 21	22.0	3 × 7.0	3.00	100
600652	MFDE PG 21	22.0	3 × 8.0	2.65	100
600634	MFDE PG 21	22.0	4 × 7.0	2.60	100
600545	MFDE PG 21	22.0	0 × 0.0	5.60	100
600656	MFDE PG 29	29.5	5 × 8.5	6.00	100
600654	MFDE PG 29	29.5	6 × 5.0	7.70	100
600655	MFDE PG 29	29.5	8 × 5.0	7.40	100
600546	MFDE PG 29	29.5	0 × 0.0	9.80	100

Cable fittings and accessories

Plastic and metal accessories ASI DE



Application

- For retroactive installation of our cable fittings
- **Cable dimensions:** 4.0 mm × 10.0 mm +/- 0.2 mm
- **Suitable for installation with the following types:**
 - TOP TP PG 13.5
 - TOP TP M 20
 - TOP T PG 13.5
 - TOP T M 20

Properties

- Seal insert for ASI bus cables

Design

- Material TPE

Part-No.	Type	Outer- \varnothing mm	weight approx. kg/100 piece	VE piece
ASI DE				
600120	ASI DE PG 13.5	14.8	0.15	loose