

# Limit Switches

## FT1R Series with reset

IP65 □ thermoplastic type



TECHNO-CONTROL EQUIPMENT

1 cable entry  
M16x1.5



FT1R31



FT1R34



FT1R32



FT1R33

TYPE OF OPERATOR	SHORT STEEL END PLUNGER	PA ROLLER PLUNGER	PA ROLLER LEVER PLUNGER HORIZONTAL ACTUATION	PA ROLLER LEVER PLUNGER VERTICAL ACTUATION
Standard - Positive opening NC contacts (→)	- (→)	- (→)	- (→)	- (→)
Minimum tripping force N	15	12	7	7
Minimum positive opening force N	30	30	24	24
<b>Z11</b> Snap action 1NC-1NO	FT1R31Z11 	FT1R34Z11 	FT1R32Z11 	FT1R33Z11 
<b>X11</b> Slow break 1NC-1NO	FT1R31X11 	FT1R34X11 	FT1R32X11 	FT1R33X11 
<b>Y11</b> Slow break 1NC-1NO overlapping	FT1R31Y11 	FT1R34Y11 	FT1R32Y11 	FT1R33Y11 
<b>Z02</b> Snap action 2NC	FT1R31Z02 	FT1R34Z02 	FT1R32Z02 	FT1R33Z02 
<b>W02</b> Slow break 2NC	FT1R31W02 	FT1R34W02 	FT1R32W02 	FT1R33W02 

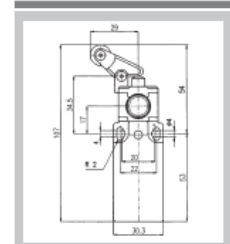
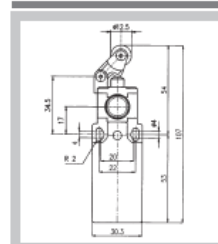
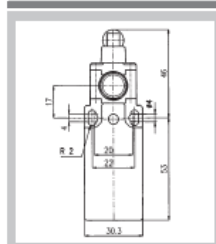
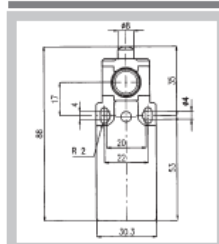
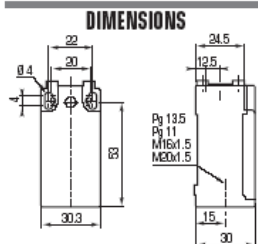
WEIGHT gr. - MIN. PACK QTY.

75 gr. 1 pcs.

78 gr. 1 pcs.

80 gr. 1 pcs.

80 gr. 1 pcs.



# FT1R Series with reset

IP65 □ thermoplastic type

1 cable entry  
M16x1.5



FT1R38



FT1R41



FT1R39



FT1R40

TYPE OF OPERATOR	18 Ø PA ROLLER LEVER	50 Ø RUBBER ROLLER LEVER	VARIABLE LENGTH 18 Ø PA ROLLER LEVER	VARIABLE LENGTH 50 Ø RUBBER ROLLER LEVER
Standard - Positive opening NC contacts	-	-	-	-
Minimum tripping force	N	0.10	0.10	0.10
Minimum positive opening force	N	0.32	-	-
<b>Z11</b> Snap action 1NC-1NO	FT1R38Z11 	FT1R41Z11 	FT1R39Z11 	FT1R40Z11 
<b>X11</b> Slow break 1NC-1NO	FT1R38X11 	FT1R41X11 	FT1R39X11 	FT1R40X11 
<b>Y11</b> Slow break 1NC-1NO overlapping	FT1R38Y11 	FT1R41Y11 	FT1R39Y11 	FT1R40Y11 
<b>Z02</b> Snap action 2NC	FT1R38Z02 	FT1R41Z02 	FT1R39Z02 	FT1R40Z02 
<b>W02</b> Slow break 2NC	FT1R38W02 	FT1R41W02 	FT1R39W02 	FT1R40W02 

WEIGHT gr. - MIN. PACK QTY.

95 gr. 1 pcs.

110 gr. 1 pcs.

120 gr. 1 pcs.

145 gr. 1 pcs.

DIMENSIONS

