

# Limit Switches

## FA3 Series

IP66 die-cast aluminium type



TECHNO-CONTROL EQUIPMENT

3 cable entries  
M16x1.5



FA331



FA334



FA332

TYPE OF OPERATOR	SHORT STEEL END PLUNGER	SHORT STEEL ROLLER PLUNGER	PA ROLLER LEVER PLUNGER HORIZONTAL ACTUATION
Standard - Positive opening NC contacts (→)	- (→)	- (→)	- (→)
Minimum tripping force	15	12	7
Minimum positive opening force	30	30	24
<b>Z11</b> 1NC-1NO Snap action  Zb	<b>FA331Z11</b>  0 13 25 41 56mm	<b>FA334Z11</b>  0 25 47 76 96mm	<b>FA332Z11</b>  0 49 90 145 210mm
<b>X11</b> 1NC-1NO Slow break  Zb	<b>FA331X11</b>  0 16 32 56mm 2.5	<b>FA334X11</b>  0 32 60 96mm 46	<b>FA332X11</b>  0 60 105 210mm 86
<b>Y11</b> 1NC-1NO overlapping Slow break  Zb	<b>FA331Y11</b>  0 29 45 56mm 15	<b>FA334Y11</b>  0 53 82 96mm 30	<b>FA332Y11</b>  0 102 146 210mm 54
<b>Z02</b> 2NC Snap action  Zb	<b>FA331Z02</b>  0 13 24 40 56mm	<b>FA334Z02</b>  0 25 45 74 96mm	<b>FA332Z02</b>  0 51 86 131 210mm
<b>W02</b> 2NC Slow break  Zb	<b>FA331W02</b>  0 15 31 56mm	<b>FA334W02</b>  0 30 59 96mm	<b>FA332W02</b>  0 57 102 210mm
<b>W20</b> 2NO Slow break  Zb	<b>FA331W20</b>  0 14 56mm	<b>FA334W20</b>  0 28 96mm	<b>FA332W20</b>  0 53 210mm

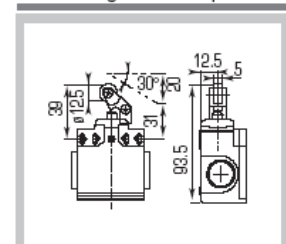
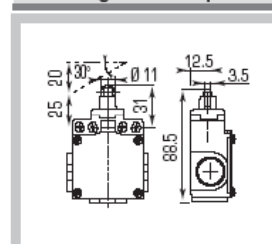
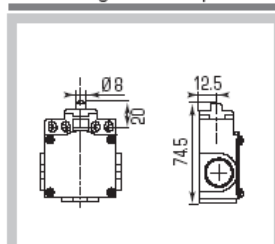
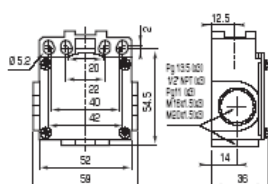
WEIGHT gr. - MIN. PACK QTY.

270 gr. 1 pcs.

280 gr. 1 pcs.

290 gr. 1 pcs.

### DIMENSIONS





# Limit Switches

## FA3 Series

IP66 die-cast aluminium type



TECHNO-CONTROL EQUIPMENT

3 cable entries  
M16x1.5



FA335



FA336



FA337

TYPE OF OPERATOR	SPRING LEVER WITH TIP IN PA	"CAT'S WHISKER"	VARIABLE LENGTH 3 Ø STEEL ROD LEVER
Standard - Positive opening NC contacts (→)	-	-	-
Minimum tripping force	0.10	0.10	0.10
Minimum positive opening force	-	-	-
<b>Z11</b> Snap action 1NC-1NO	FA335Z11 	FA336Z11 	FA337Z11 
<b>X11</b> Slow break 1NC-1NO	FA335X11 	FA336X11 	FA337X11 
<b>Y11</b> Slow break 1NC-1NO overlapping	FA335Y11 	FA336Y11 	FA337Y11 
<b>Z02</b> Snap action 2NC	FA335Z02 	FA336Z02 	FA337Z02 
<b>W02</b> Slow break 2NC	FA335W02 	FA336W02 	FA337W02 
<b>W20</b> Slow break 2NO	FA335W20 	FA336W20 	FA337W20 

WEIGHT gr. - MIN. PACK QTY.

305 gr. 1 pcs.

320 gr. 1 pcs.

380 gr. 1 pcs.

### DIMENSIONS

