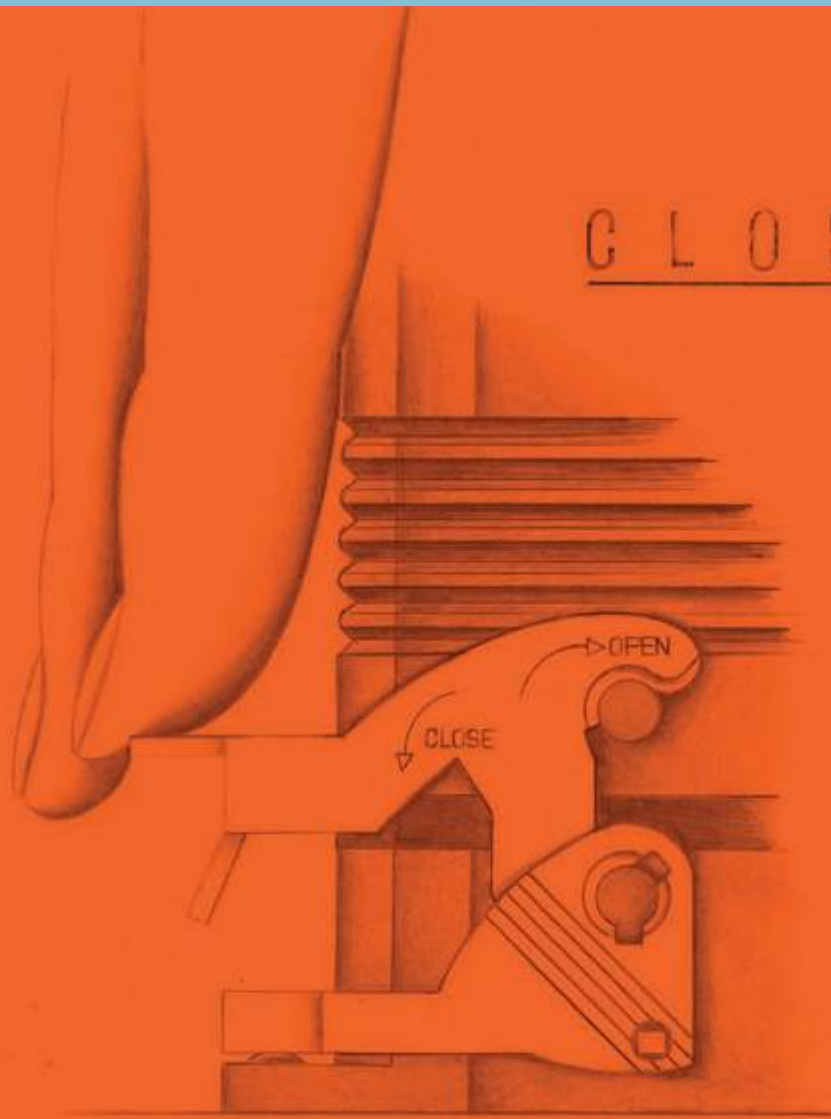
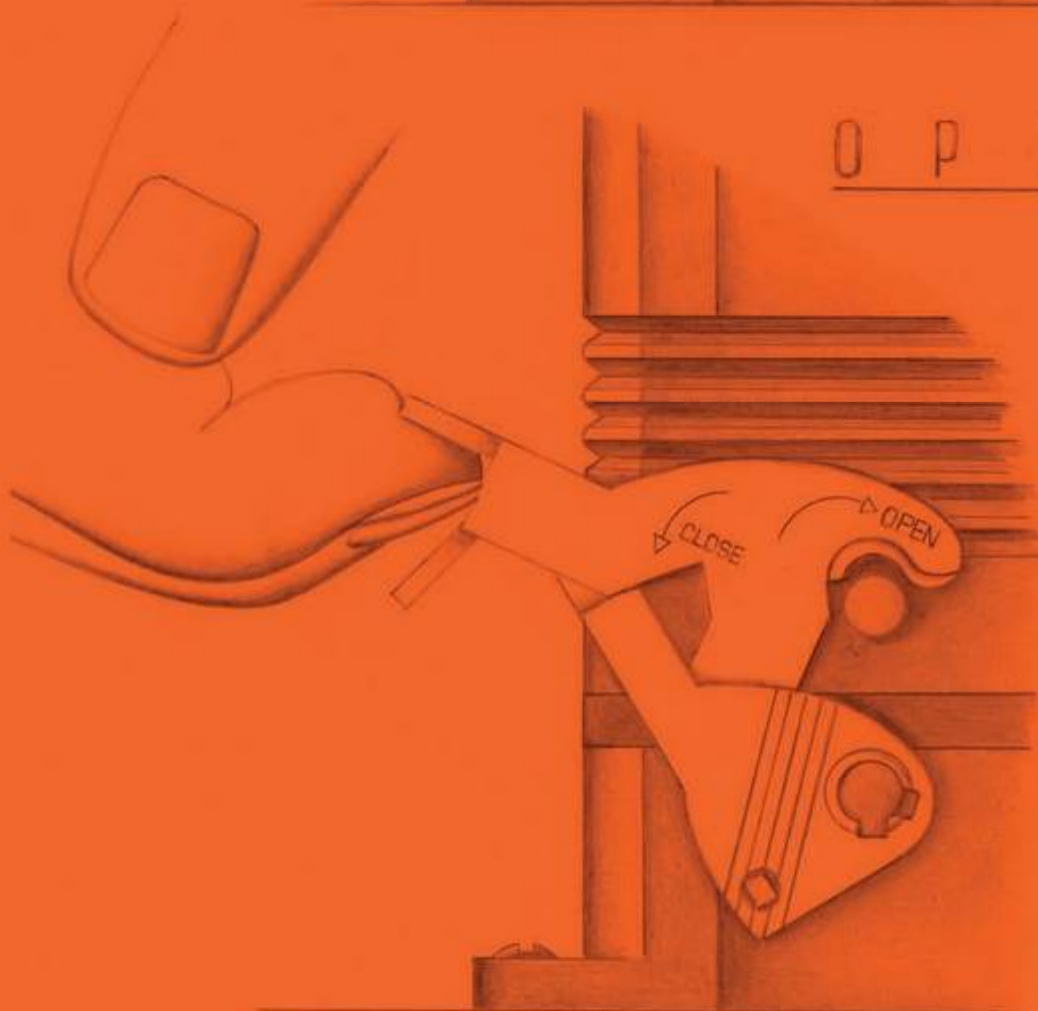


C L O S E



O P E N



IP67

The performance requirements in **connection protection** are increasingly varied and specialized.

To respond to this wide range of needs, **ILME has developed several new solutions, including the innovative V-Type lever.**

The new lever, due to the **vertical closing movement, offers an IP66/IP67 degree of protection** (according to EN 60529) when fitted with a complete and coupled connector **and used with ILME standard hoods in die cast aluminium with pegs (without adaptor).**
The high degree of protection is therefore not dependant on the use of special gaskets or locking devices.

The fixing flanges are the same as those fitted on traditional models.

This means it is possible to use the new housings **as alternatives to the traditional version without affecting the interchangeability,** or changing dimensions, spaces, flanges or fixing positions.

The new V-Type lever further extends the range, which includes the traditional version (CLASS series), with springs and rollers and the insulated version (T-Type series), **thus, offering customers a complete and custom selection for all needs. ILME is the ONLY company that offers a lever system for all possible requirements.**

The V-Type lever is the result of ongoing research on connection protection systems which confirms **ILME as a proactive leader in new solutions with forty years experience.**

The new lever differs from other commercial ones because of its closing movement principle, consisting of 2 hinged elements that are then pivoted on the housing.

This composite movement enables to move the lever above the pin of the housing that has to be fixed in place with an initial rotatory movement and then press it downwards to engage the locking mechanism.

OPEN



CLOSE



The tight seal after closure and the simplicity of the movement are key characteristics that **only ILME has managed to combine into a single lever.**

The V-Type lever also has other interesting functional characteristics for several applications:

- **The friction on the pin is almost zero** because the lever exerts its pressure vertically, thus significantly reducing wear in case of frequent use.
- The complete lever is **manufactured in stainless steel** and is fitted with a catch that prevents it from being accidentally detached.
- **The absence of parts in plastic** offers a higher resistance to impacts and in case of contact with oils and aggressive chemical substances or high ambient temperatures.
- **The lever can be used for applications with vibrations** because it has no springs and is therefore more rigid.
- **The lever occupies a very small space** during the closing phase.
- **it is recommended** in cases when the cable **weight forces the levers to open**, such as vertically installed connectors and the cable is mounted in the bottom.

The interchangeability with equivalent traditional levers with springs and rollers **simplifies the management of stocks, reduces costs and increases flexibility of use.**

Available in bulkhead or surface-mounted versions for sizes 44.27 with a single lever, 57.27, 77.27 and 104.27 with 2 levers. High construction models are available on request.

The item code identifies the new series with the **suffix C7 or M7:**

- C7I bulkhead mounting housing
- C7P surface mounting housing, Pg thread, standard height
- M7P surface mounting housing, metric thread, standard height
- C7AP surface mounting housing, Pg thread, high
- M7AP surface mounting housing, metric thread, high

Approved for degrees of protection **UL Type 4 (= NEMA 4)**, **UL Type 4X (=NEMA 4X)** e **UL Type 12 (=NEMA 12)**.

Our enclosures have been certified by UL, according to the American standard ANSI/UL50, as Recognised Components for the USA and Canada (cURus mark) as accessories of our set of UL and CSA certified connector inserts (file UL E115072, file CSA 082270_0_000).

With connector complete and with appropriate cable glands, it is possible to guarantee **IP69K protection rating compliant with DIN 40050-9** (water jet at 80 °C (± 5 °C) at a pressure of 80bar + 100 bar, for a period of 30s for each angle of inclination (0°, 30°, 60° and 90° w.r.t the plane).

Ambient temperature limits from -40 °C to +125 °C.

Enclosures **can accommodate all connector inserts** size 44.27, 57.27, 77.27 and 104.27 with crimp connection, screw, spring and the innovative Squich® connection.

CMCE (to be crimped) and CMSE (with spring connection) series inserts can be used for rated voltages up to 830V.

On request a version that also allows the inclusion of CME series fruits with rated voltage of 830V can be supplied, thanks to the additional insulation strips placed inside.

For bulkhead mounting housings, IP66/IP67 protection rating is guaranteed for mounting on a sufficiently rigid panel; use suitable length M4 screws (negligible surface buckling when subjected to tightening couple on the fixing screws of 0.8 + 1.2 Nm or deformation caused by the weight of the complete connector). In case of insufficient rigidity use of C7.. FL flanges (page 259) is recommended, in which case use suitable length M4 screws and M4 flat/spring washers. In addition, the panel surface in contact with the flange gasket of the bulkhead mounting housings must be free from defects (deep scratches, grooves, burrs) that could negatively affect the performance of the gasket.

It is recommended to complete the enclosure with appropriate cable glands and connections.

The new series joins the family of traditional CLASS series enclosures and will support the various solutions : **standard (grey)**, for **aggressive environments (black)**, for **temperatures up to 180 °C (red)**, with **protection rating IP68** and in **thermoplastic insulating material (T-Type)**.



1 lever
size 44.27



2 levers
sizes 57.27,
77.27, 104.27



Also available 1-lever fixed enclosures and hoods with lever/s:



1 lever
sizes 57.27, 77.27, 104.27



IP65 with cover



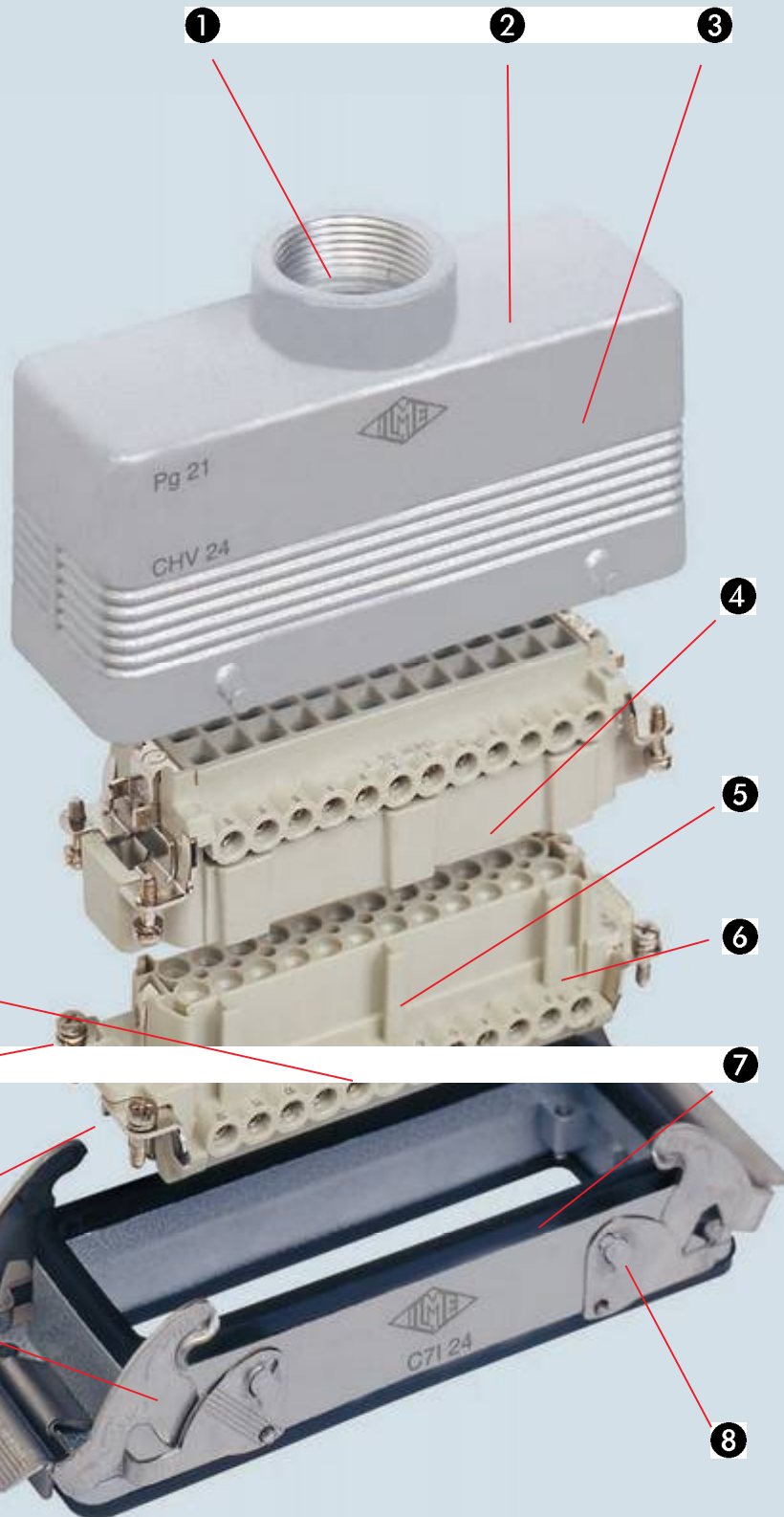
1 lever
sizes 44.27, 57.27,
77.27, 104.27



2 levers
sizes 57.27,
77.27, 104.27



IP65 with cover



① Threaded cable passage in various Pg diameters (types with pre-code "C") or metric passage (types with pre-code "M") in accordance with EN 60423, for cable entry devices in accordance with EN 50262 (NPT threading on request), may be located vertically, horizontally or frontally.

② Robust enclosures made of die cast aluminium alloy. Fixed surface-mounted, bulkhead and hood versions are available.

③ Metallic enclosures with a coated finish of epoxy-polyester with high resistance to mechanical stress and external agents.

④ The inserts are made of UL certified self-extinguishing fibreglass reinforced thermoplastics, and feature an operating temperature range between -40 °C and +125 °C.

⑤ Insert profile polarised with asymmetrical guides to avoid incorrect matings. The inserts have a mechanical life equal to or higher than 500 mating cycles.

⑥ Inserts are manufactured in compliance with European standard EN 61984 (DIN VDE 0627), certified and identified with UL and CSA markings.

⑦ Special seal gaskets in anti-aging, oil-resistant, fuel-resistant, vinyl nitrile elastomer.

⑧ Stainless steel closure levers and springs guarantee a perfect closure and sealing.

⑨ Locking device available in two versions, simple (with one lever), or double (with two levers).

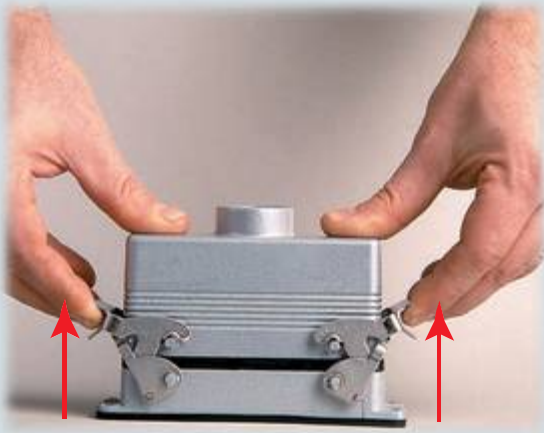
⑩ Captive insert fastening screws, with anti-slackening spring washer.

⑪ Contact position identified with numbers or codes on both sides of each insert and printed with a laser system or from a die.

⑫ Earthing terminal protection with ample contact surface

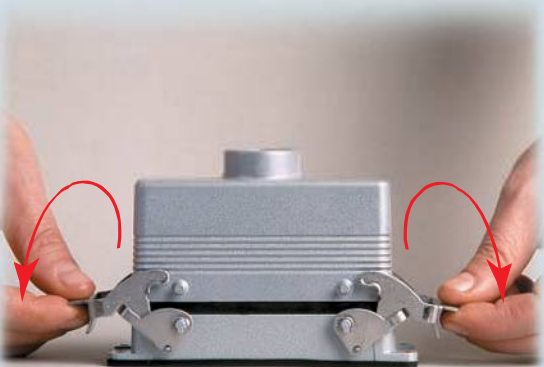
OPEN

①



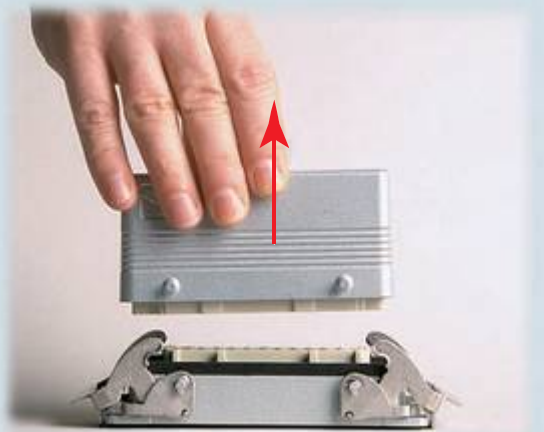
Lift the levers.

②



Lower the levers.

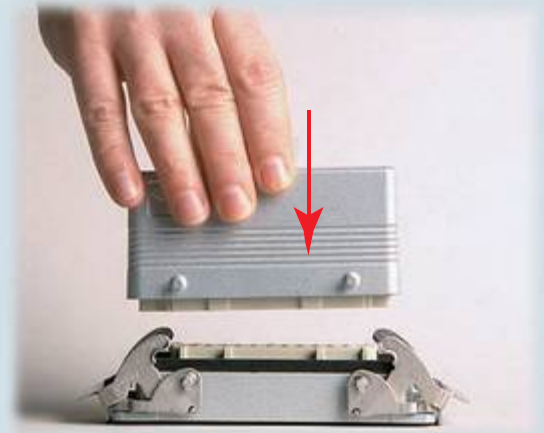
③



Remove the connector.

CLOSE

①



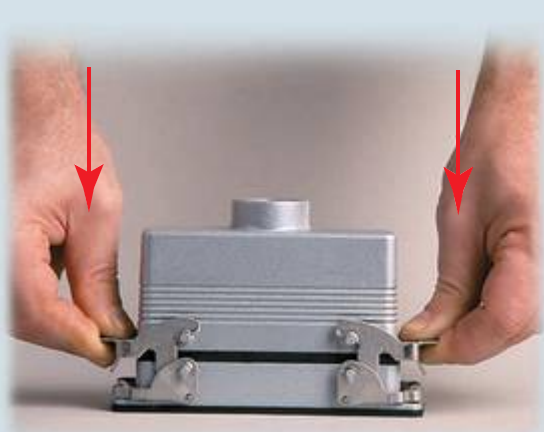
Position the connector.

②



Hook the levers to the pegs.

③



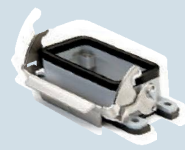
Lower the lever until it clicks into place.



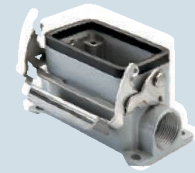
inserts:		page
CDD	24 poles + ⊕	59
CQE	10 poles + ⊕	80
CSH	6 poles + ⊕	88
CCE	6 poles + ⊕	94
CNE, CSE, JCNE, JCSE	6 poles + ⊕ 95 and 106	
CSS	6 poles + ⊕	118
CT, CTE, CTSE *)	6 poles + ⊕ 126 and 130	
MIXO	2 modules	156+195

insert centre distance:
44 x 27 mm

bulkhead mounting housings with single lever in stainless steel



surface mounting housings with single lever in stainless steel



description	part no.		part no.		part no.	
			entry Pg		entry M	
with lever, size "44.27"	C7I 06 L					
with lever, size "44.27"			C7P 06 L	16	M7P 06 L20	20
with lever, size "44.27"			C7P 06 L2	16 x 2	M7P 06 L220	20 x 2
with lever, high construction, size "44.27"			C7AP 06 L	21	M7AP 06 L32	32
with lever, high construction, size "44.27"			C7AP 06 L2	21 x 2	M7AP 06 L232	32 x 2
with lever, high construction, size "44.27"			C7AP 06 L29	29	M7AP 06 L40	40
with lever, high construction, size "44.27"			C7AP 06 L229	29 x 2	M7AP 06 L240	40 x 2

*) can be used only in bulkhead mounting housings

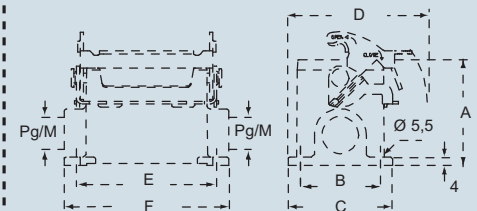
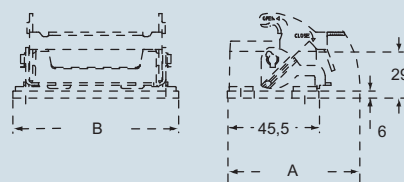
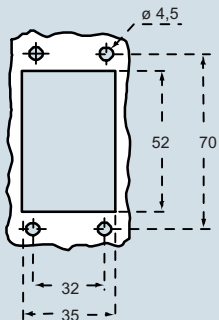
dimensions in mm

dimensions in mm

panel cut-out for bulkhead mounting housings in mm

C7I L

C7P L - C7AP L and M7P L - M7AP L



The new lever, due to the vertical closing movement, offers an IP66/IP67 protection rating (according to EN 60529) when fitted with a complete and coupled connector and used with ILME standard hoods in die cast aluminum with pegs (without adaptor).

	A	B
C7I 06 L	66	82.5

	A	B	C	D	E	F
C7P/M7P 06 L	53	40	52	70	70	82
C7AP/M7AP 06 L	73	45	57	72.5	70	82

For bulkhead mounting housings, IP66/IP67 protection rating is guaranteed for mounting on a sufficiently rigid panel; use suitable length M4 screws (negligible surface buckling when subjected to tightening couple on the fixing screws of 0.8 + 1.2 Nm or deformation caused by the weight of the complete connector).

In case of insufficient rigidity use of C7.. FL flanges (page 259) is recommended, in which case use suitable length M4 screws and M4 (on the enclosure) and M4 (on the flange) flat/spring washers with M4 locknut. In addition, the panel surface in contact with the flange gasket of the bulkhead mounting housings must be free from defects (deep scratches, grooves, burrs) that could negatively affect the performance of the gasket.

ILME® Type
C7 4/4X/12

dimensions shown are not binding and may be changed without notice

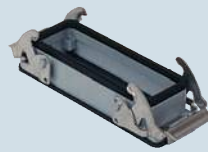
C7 - size 44.27



inserts:		page
CDD	42 poles + ⊕	61
CQE	18 poles + ⊕	81
CSH	10 poles + ⊕	89
CCE	10 poles + ⊕	96
CNE, CSE, JCNE, JCSE	10 poles + ⊕ 97 and 107	
CSS	10 poles + ⊕	119
CT, CTE, CTSE *)	10 poles + ⊕ 127 and 131	
CMSE	3+2 (aux) poles + ⊕	135
CMCE	3+2 (aux) poles + ⊕	134
CX	8/24 poles + ⊕	151
MIXO	3 modules	156+195

insert centre distance:
57 x 27 mm

bulkhead mounting housings with 2 levers in stainless steel



lever in stainless steel



surface mounting housings with 2 levers in stainless steel



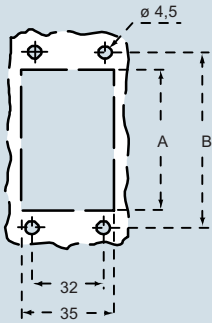
lever in stainless steel



description	part no.		entry Pg	part no.		entry M
with levers, size "57.27"	C7I 10					
with levers, size "57.27"			C7P 10	16	M7P 10.20	20
with levers, size "57.27"			C7P 10.2	16 x 2	M7P 10.220	20 x 2
with levers, high construction, size "57.27"			C7AP 10.21	21	M7AP 10.32	32
with levers, high construction, size "57.27"			C7AP 10.221	21 x 2	M7AP 10.232	32 x 2
with levers, high construction, size "57.27"			C7AP 10.29	29	M7AP 10.40	40
with levers, high construction, size "57.27"			C7AP 10.229	29 x 2	M7AP 10.240	40 x 2

*) can be used only in bulkhead mounting housings

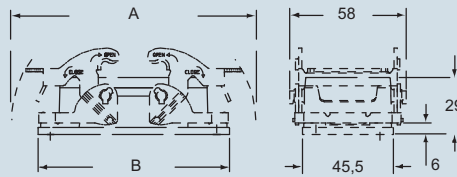
panel cut-out for bulkhead mounting housings in mm



	A	B
C7I 10	65	83

dimensions in mm

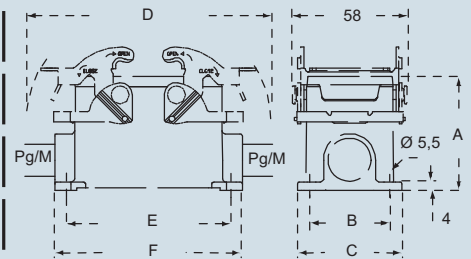
C7I



	A	B
C7I 10	122	95.5

dimensions in mm

C7P - C7AP and M7P - M7AP



	A	B	C	D	E	F
C7P/M7P 10	57	40	52	122	82	93.5
C7AP/M7AP 10	73	45	57	122	82	93.5

The new lever, due to the vertical closing movement, offers an IP66/IP67 protection rating (according to EN 60529) when fitted with a complete and coupled connector and used with ILME standard hoods in die cast aluminum with pegs (without adaptor).

For bulkhead mounting housings, IP66/IP67 protection rating is guaranteed for mounting on a sufficiently rigid panel; use suitable length M4 screws (negligible surface buckling when subjected to tightening couple on the fixing screws of 0.8 ÷ 1.2 Nm or deformation caused by the weight of the complete connector). In case of insufficient rigidity use of C7.. FL flanges (page 259) is recommended, in which case use suitable length M4 screws and M4 (on the enclosure) and M4 (on the flange) flat/spring washers with M4 locknut.

In addition, the panel surface in contact with the flange gasket of the bulkhead mounting housings must be free from defects (deep scratches, grooves, burrs) that could negatively affect the performance of the gasket.



dimensions shown are not binding and may be changed without notice



inserts:		page
CD	40 poles + ⊕	59
CT, CTS (10A)	40 poles + ⊕	56
CDD	72 poles + ⊕	62
CQE	32 poles + ⊕	82
CSH	16 poles + ⊕	90
CCE	16 poles + ⊕	98
CNE, CSE, JCNE, JCSE	16 poles + ⊕	99 and 108
CSS	16 poles + ⊕	120
CT, CTE, CTSE (16A *)	16 poles + ⊕	128 and 132
CMSE	6+2 (aux) poles + ⊕	137
CMCE	6+2 (aux) poles + ⊕	136
CP	6 poles + ⊕	149
CX	6/36 e 12/2 poles + ⊕	152÷153
CX	4/0 and 4/2 poles + ⊕	154
MIXO	4 modules	156÷195

insert centre distance: 77.5 x 27 mm

bulkhead mounting housings with 2 levers in stainless steel



lever in stainless steel



surface mounting housings with 2 levers in stainless steel



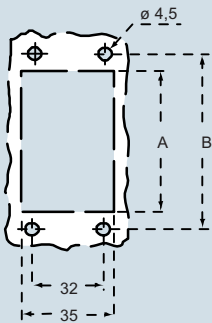
lever in stainless steel



description	part no.		entry Pg	part no.		entry M
with levers, size "77.27"	C7I 16					
with levers, size "77.27"			C7P 16	21	M7P 16.25	25
with levers, size "77.27"			C7P 16.2	21 x 2	M7P 16.225	25 x 2
with levers, high construction, size "77.27"			C7AP 16.21	21	M7AP 16.32	32
with levers, high construction, size "77.27"			C7AP 16.221	21 x 2	M7AP 16.232	32 x 2
with levers, high construction, size "77.27"			C7AP 16.29	29	M7AP 16.40	40
with levers, high construction, size "77.27"			C7AP 16.229	29 x 2	M7AP 16.240	40 x 2

*) can be used only in bulkhead mounting housings

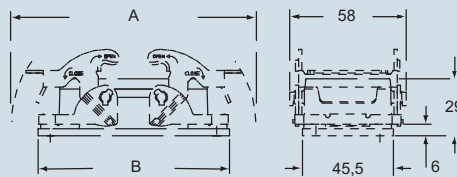
panel cut-out for bulkhead mounting housings in mm



	A	B
C7I 16	86	103

dimensions in mm

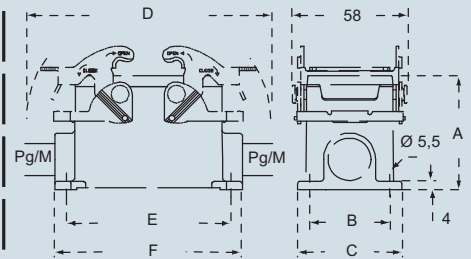
C7I



	A	B
C7I 16	142.5	115.5

dimensions in mm

C7P - C7AP and M7P - M7AP



	A	B	C	D	E	F
C7P/M7P 16	63	45	57	142.5	105	117
C7AP/M7AP 16	77	45	57	142.5	105	117

The new lever, due to the vertical closing movement, offers an IP66/IP67 protection rating (according to EN 60529) when fitted with a complete and coupled connector and used with ILME standard hoods in die cast aluminum with pegs (without adaptor).

For bulkhead mounting housings, IP66/IP67 protection rating is guaranteed for mounting on a sufficiently rigid panel; use suitable length M4 screws (negligible surface buckling when subjected to tightening couple on the fixing screws of 0.8 ÷ 1.2 Nm or deformation caused by the weight of the complete connector). In case of insufficient rigidity use of C7.. FL flanges (page 259) is recommended, in which case use suitable length M4 screws and M4 (on the enclosure) and M4 (on the flange) flat/spring washers with M4 locknut.

In addition, the panel surface in contact with the flange gasket of the bulkhead mounting housings must be free from defects (deep scratches, grooves, burrs) that could negatively affect the performance of the gasket.

CALUS Type 4/4X/12

dimensions shown are not binding and may be changed without notice



inserts:		page
CD	64 poles + ⊕	51
CT, CTS (10A)	64 poles + ⊕	57
CDD	108 poles + ⊕	64
CQE	46 poles + ⊕	83
CSH	24 poles + ⊕	91
CCE	24 poles + ⊕	100
CNE, CSE, JCNE, JCSE	24 poles + ⊕	101 and 109
CSS	24 poles + ⊕	121
CT, CTE, CTSE (16A) *)	24 poles + ⊕	129 and 133
CMSE	10+2 (aux) poles + ⊕	139
CMCE	10+2 (aux) poles + ⊕	138
CX	4/8 poles + ⊕	155
MIXO	6 modules	156+195

insert centre distance: 104 x 27 mm

bulkhead mounting housings with 2 levers in stainless steel



lever in stainless steel



surface mounting housings with 2 levers in stainless steel



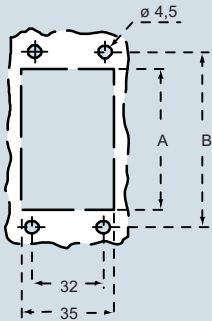
lever in stainless steel



description	part no.		entry Pg	part no.		entry M
with levers, size "104.27"	C7I 24					
with levers, size "104.27"			C7P 24	21	M7P 24.25	25
with levers, size "104.27"			C7P 24.2	21 x 2	M7P 24.225	25 x 2
with levers, high construction, size "104.27"			C7AP 24.21	21	M7AP 24.32	32
with levers, high construction, size "104.27"			C7AP 24.221	21 x 2	M7AP 24.232	32 x 2
with levers, high construction, size "104.27"			C7AP 24.29	29	M7AP 24.40	40
with levers, high construction, size "104.27"			C7AP 24.229	29 x 2	M7AP 24.240	40 x 2

*) can be used only in bulkhead mounting housings

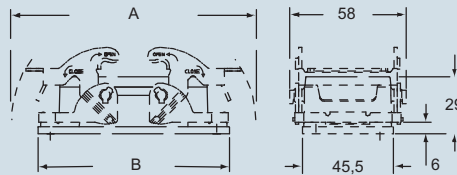
panel cut-out for bulkhead mounting housings in mm



	A	B
C7I 24	112	130

dimensions in mm

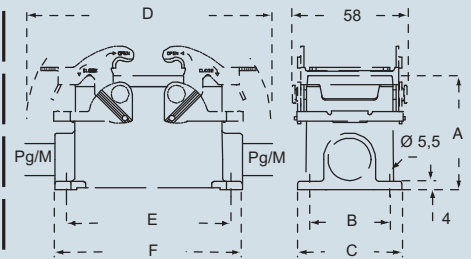
C7I



	A	B
C7I 24	169	142.5

dimensions in mm

C7P - C7AP and M7P - M7AP



	A	B	C	D	E	F
C7P/M7P 24	63	45	57	169	132	144
C7AP/M7AP 24	80	45	57	169	132	144

The new lever, due to the vertical closing movement, offers an IP66/IP67 protection rating (according to EN 60529) when fitted with a complete and coupled connector and used with ILME standard hoods in die cast aluminum with pegs (without adaptor).

For bulkhead mounting housings, IP66/IP67 protection rating is guaranteed for mounting on a sufficiently rigid panel; use suitable length M4 screws (negligible surface buckling when subjected to tightening couple on the fixing screws of 0.8 ÷ 1.2 Nm or deformation caused by the weight of the complete connector). In case of insufficient rigidity use of C7.. FL flanges (page 259) is recommended, in which case use suitable length M4 screws and M4 (on the enclosure) and M4 (on the flange) flat/spring washers with M4 locknut.

In addition, the panel surface in contact with the flange gasket of the bulkhead mounting housings must be free from defects (deep scratches, grooves, burrs) that could negatively affect the performance of the gasket.

ILME® Type 4/4X/12

dimensions shown are not binding and may be changed without notice



inserts:	page
CD.....	40, 64 poles + ⊕ 49 and 51
CDD	24, 42, 72, 108 poles + ⊕ 59+64
CQE	10, 18, 32, 46 poles + ⊕ 80+83
CSH	6, 10, 16, 24 poles + ⊕ 88+91
CCE	6, 10, 16, 24 poles + ⊕ 94+100
CNE, CSE....	6, 10, 16, 24 poles + ⊕ 95+101
JCNE, JCSE*)	6, 10, 16, 24 poles + ⊕ 106+109
CMSE	3+ ² , 6+ ² , 10+ ² poles + ⊕ 135+139
CMCE	3+ ² , 6+ ² , 10+ ² poles + ⊕ 134+138
CP	6 poles + ⊕ 149
CX	8/24, 6/36, 12/2 poles + ⊕ 151+153
CX	4/0, 4/2, 4/8 poles + ⊕ 154+155
MIXO.....	2, 3, 4, 6 modules 156+195

insert centre distance:
44 x 27 mm, 57 x 27 mm, 77,5 x 27 mm, 104 x 27 mm

hoods with 2 pegs



hoods with 4 pegs

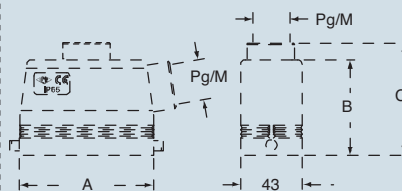


C-TYPE

description	part no.	entry Pg	part no.	entry M	part no.	entry Pg	part no.	entry M
with pegs, side entry, size "44.27"	CHO 06 L13	13.5	MHO 06 L20	20				
with pegs, side entry, size "44.27"	CHO 06 L16	16	MHO 06 L25	25				
with pegs, side entry, high construction, size "44.27"	CFO 06 L21	21	MFO 06 L25	25				
with pegs, side entry, high construction, size "44.27"	CFO 06 L29	29	MFO 06 L32	32				
with pegs, side entry, size "57.27"					CHO 10	16	MHO 10.20	20
with pegs, side entry, size "57.27"							MHO 10.25	25
with pegs, side entry, high construction, size "57.27"					CAO 10.21	21	MAO 10.32	32
with pegs, side entry, high construction, size "57.27"					CAO 10.29	29	MAO 10.40	40
with pegs, side entry, size "77.27"					CHO 16	21	MHO 16.25	25
with pegs, side entry, size "77.27"							MHO 16.32	32
with pegs, side entry, high construction, size "77.27"					CAO 16.21	21	MAO 16.32	32
with pegs, side entry, high construction, size "77.27"					CAO 16.29	29	MAO 16.40	40
with pegs, side entry, size "104.27"					CHO 24	21	MHO 24.25	25
with pegs, side entry, size "104.27"							MHO 24.32	32
with pegs, side entry, high construction, size "104.27"					CAO 24.21	21	MAO 24.32	32
with pegs, side entry, high construction, size "104.27"					CAO 24.29	29	MAO 24.40	40
with pegs, top entry, size "44.27"	CHV 06 L13	13.5	MHV 06 L20	20				
with pegs, top entry, size "44.27"	CHV 06 L16	16	MHV 06 L25	25				
with pegs, top entry, high construction, size "44.27"	CFV 06 L21	21	MFV 06 L25	25				
with pegs, top entry, high construction, size "44.27"	CFV 06 L29	29	MFV 06 L32	32				
with pegs, top entry, size "57.27"					CHV 10	16	MHV 10.20	20
with pegs, top entry, size "57.27"							MHV 10.25	25
with pegs, top entry, high construction, size "57.27"					CAV 10.21	21	MAV 10.32	32
with pegs, top entry, high construction, size "57.27"					CAV 10.29	29	MAV 10.40	40
with pegs, top entry, size "77.27"					CHV 16	21	MHV 16.25	25
with pegs, top entry, size "77.27"							MHV 16.32	32
with pegs, top entry, high construction, size "77.27"					CAV 16.21	21	MAV 16.32	32
with pegs, top entry, high construction, size "77.27"					CAV 16.29	29	MAV 16.40	40
with pegs, top entry, size "104.27"					CHV 24	21	MHV 24.25	25
with pegs, top entry, size "104.27"							MHV 24.32	32
with pegs, top entry, size "104.27"					CHV 24.29	29	MHV 24.40	40
with pegs, top entry, high construction, size "104.27"					CAV 24.21	21	MAV 24.32	32
with pegs, top entry, high construction, size "104.27"					CAV 24.29	29	MAV 24.40	40

dimensions in mm

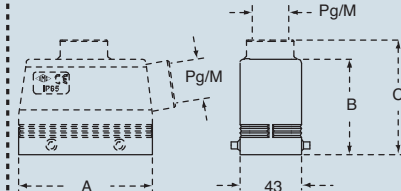
CHO L - CFO L and MHO L - MFO L
CHV L - CFV L and MHV L - MFV L



	A	B	C
CHO/MHO 06	60	47	-
CHO/MHO 10	73	52	-
CHO/MHO 16	93.5	63	-
CHO/MHO 24	120	63	-
CFO/MFO 06	60	72	-
CAO/MAO 10	73	70	-
CAO/MAO 16	93.5	76	-
CAO/MAO 24	120	76	-

dimensions in mm

CHO - CAO and MHO - MAO
CHV - CAV and MHV - MAV



	A	B	C
CHV/MHV 06	60	40	53
CHV/MHV 10	73	45	58
CHV/MHV 16	93.5	45	58
CHV/MHV 24	120	55	69.5
CFV/MFV 06	60	72	88
CAV/MAV 10	73	70	85
CAV/MAV 16	93.5	76	91
CAV/MAV 24	120	76	91

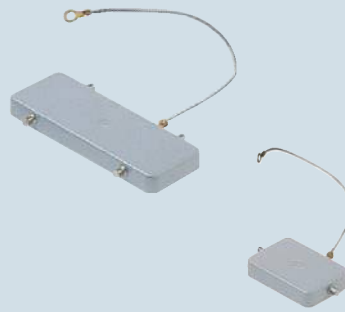
The new lever, due to the vertical closing movement, offers an IP66/IP67 protection rating (according to EN 60529) when fitted with a complete and coupled connector and used with ILME standard hoods in die cast aluminum with pegs (without adaptor).

CALUS Type 4/4X/12



dimensions shown are not binding and may be changed without notice

covers



frames for bulkhead mounting housings



description	part no. with 2 pegs	part no. with 4 pegs	part no.
- used with enclosures size "44.27" - used with enclosures size "57.27" - used with enclosures size "77.27" - used with enclosures size "104.27"	CHC 06 L	CHC 10 CHC 16 CHC 24	C7 06 FL C7 10 FL C7 16 FL C7 24 FL
size "44.27" size "57.27" size "77.27" size "104.27"			

The covers do not provide protection rating IP66/IP67.

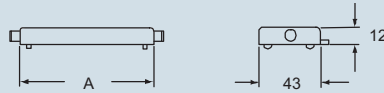
dimensions in mm

CHC



- for enclosures with 2 levers

CHC L

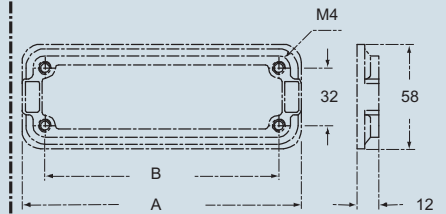


- for enclosures with 1 lever

CHC - CHC L	A
06	60
10	73
16	93.5
24	120

dimensions in mm

C7..FL



	A	B
C7 06 FL	96	70
C7 10 FL	109	83
C7 16 FL	129	103
C7 24 FL	156	130

CAUS® Type 4/4X/12

dimensions shown are not binding and may be changed without notice