

- Compliant with EN 60309-1 and -2
- Enclosure, insert and locking ring in insulating, thermoplastic, self-extinguishing material
- PE...SV types 16A and 32A (IP44), entry with cable gland colour coded according to the operating voltage, RAL 7035 grey enclosure
- PEW...SV types 16A and 32A (IP66/IP67), entry with cable gland colour coded according to the operating voltage, RAL 7035 grey enclosure, locking ring with gasket colour coded according to operating voltage
- PEW...SV types 63A and 125A (IP67), entry with cable gland, RAL 7035 grey enclosure, locking ring with gasket colour coded according to operating voltage
- PEW...SV types 63A and 125A (IP67), cable anchoring collar incorporated in the insert
- SIP version with phase inverter (3P+N+⊕, h6) page 31
- Terminals with retained screws
- 63A, 125A: with pilot contact
- Nickel-plated contacts standard on 63A and 125A (on 16A and 32A only version PHW...SV page 14)
- IP44 and IP66/IP67 degrees of protection (EN 60529)
- ⊕ with Italian Quality Mark

16A
IP44 degree of protection



NEW

32A
IP44 degree of protection



NEW

Number of poles	Frequency Hz	Voltage V	Earthing contact position h	Part No.	Colour	Part No.	Colour	
2P+⊕	50 and 60	100 - 130	4	PE 1643 SV ⊕	Yellow	PE 3243 SV ⊕	Yellow	
	50 and 60	200 - 250	6	PE 1663 SV ⊕	Blue	PE 3263 SV ⊕	Blue	
	50 and 60	380 - 415	9	PE 1693 SV ⊕	Red	PE 3293 SV ⊕	Red	
	50 and 60	480 - 500	7	PE 1673 SV ⊕	Black	PE 3273 SV ⊕	Black	
	50 and 60	ins. transformer	12	PE 16123 SV ⊕	A.V.	PE 32123 SV ⊕	A.V.	
	> 300 - 500	> 50	2	PE 1623 SV ⊕	Green	PE 3223 SV ⊕	Green	
	d.c.	> 50 - 250	3	PE 1633 SV ⊕	A.V.	PE 3233 SV	A.V.	
	d.c.	> 250	8	PE 1683 SV	A.V.	PE 3283 SV	A.V.	
	3P+⊕	50 and 60	100 - 130	4	PE 1644 SV ⊕	Yellow	PE 3244 SV ⊕	Yellow
		50 and 60	200 - 250	9	PE 1694 SV ⊕	Blue	PE 3294 SV ⊕	Blue
50 and 60		380 - 415	6	PE 1664 SV ⊕	Red	PE 3264 SV ⊕	Red	
60		440 - 460	11	PE 16114 SV ⊕	Red	PE 32114 SV ⊕	Red	
50 and 60		480 - 500	7	PE 1674 SV ⊕	Black	PE 3274 SV ⊕	Black	
50 and 60		600 - 690	5	PE 1654 SV	Black	PE 3254 SV	Black	
50		380	3	PE 1634 SV ⊕	Red	PE 3234 SV ⊕	Red	
60		440	3	PE 1634 SV ⊕	Red	PE 3234 SV ⊕	Red	
100 - 300		> 50	10	PE 16104 SV ⊕	Green	PE 32104 SV ⊕	Green	
> 300 - 500		> 50	2	PE 1624 SV ⊕	Green	PE 3224 SV ⊕	Green	
3P+N+⊕	50 and 60	57/100 - 75/130	4	PE 1645 SV ⊕	Yellow	PE 3245 SV ⊕	Yellow	
	50 and 60	120/208 - 144/250	9	PE 1695 SV ⊕	Blue	PE 3295 SV ⊕	Blue	
	50 and 60	200/346 - 240/415	6	PE 1665 SV ⊕	Red	PE 3265 SV ⊕	Red	
	50 and 60	277/480 - 288/500	7	PE 1675 SV ⊕	Black	PE 3275 SV ⊕	Black	
	50 and 60	347/600 - 400/690	5	PE 1655 SV	Black	PE 3255 SV	Black	
	60	250/440 - 265/460	11	PE 16115 SV ⊕	Red	PE 32115 SV ⊕	Red	
	50	220/380	3	PE 1635 SV ⊕	Red	PE 3235 SV ⊕	Red	
	60	250/440	3	PE 1635 SV ⊕	Red	PE 3235 SV ⊕	Red	
	> 300 - 500	> 50	2	PE 1625 SV ⊕	Green	PE 3225 SV ⊕	Green	

Legend

A.V. = Colour according to voltage
 (*) Green may be used together with the colour of the operating range for frequencies above 60 Hz and up to a maximum of 500 Hz.

Accessories for IP66/IP67 plugs (optional)

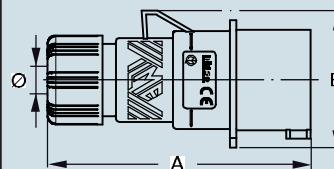


Loose protective cover

Size	Polarity	Part No.
16A	2P+⊕	PEW 163 CS
16A	3P+⊕	PEW 164 CS
16A	3P+N+⊕	PEW 165 CS
32A	2/3P+⊕	PEW 324 CS
32A	3P+N+⊕	PEW 325 CS
63A	All	PEW 63 CS
125A	All	PEW 125 CS

dimensions in mm

(16 / 32A) PE ... SV



PE...SV	A	B	ø min	ø max
16A 2P+⊕	129	59.5	7	16
3P+⊕	129	67	7	16
3P+N+⊕	129	75	8	24
32A 2P+⊕	150	81	8	24
3P+⊕	150	81	8	24
3P+N+⊕	150	90	8	24

dimensions shown are not binding
 and may be changed without notice

PEW...SV coupler plugs, low voltage from over 50V up to 690V



16A
IP66/IP67 degrees of protection



NEW

32A
IP66/IP67 degrees of protection



NEW

63A
IP67 degree of protection



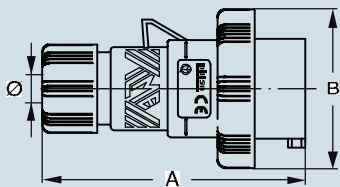
125A
IP67 degree of protection



Part No.	Colour	Part No.	Colour	Part No.	Colour	Part No.	Colour
PEW 1643 SV ⊕	Yellow	PEW 3243 SV ⊕	Yellow	PEW 6343 SV ⊕	Yellow	PEW 12543 SV ⊕	Yellow
PEW 1663 SV ⊕	Blue	PEW 3263 SV ⊕	Blue	PEW 6363 SV ⊕	Blue	PEW 12563 SV ⊕	Blue
PEW 1693 SV ⊕	Red	PEW 3293 SV ⊕	Red	PEW 6393 SV ⊕	Red	PEW 12593 SV ⊕	Red
PEW 1673 SV ⊕	Black	PEW 3273 SV ⊕	Black	PEW 6373 SV ⊕	Black	PEW 12573 SV ⊕	Black
PEW 16123 SV ⊕	A.V.	PEW 32123 SV ⊕	A.V.	PEW 63123 SV ⊕	A.V.	PEW 125123 SV ⊕	A.V.
PEW 1623 SV ⊕	Green	PEW 3223 SV ⊕	Green	PEW 6323 SV	Green	PEW 12523 SV	Green
PEW 1633 SV ⊕	A.V.	PEW 3233 SV	A.V.	PEW 6333 SV	A.V.	PEW 12533 SV	A.V.
PEW 1683 SV	A.V.	PEW 3283 SV	A.V.	PEW 6383 SV	A.V.	PEW 12583 SV	A.V.
PEW 1644 SV ⊕	Yellow	PEW 3244 SV ⊕	Yellow	PEW 6344 SV ⊕	Yellow	PEW 12544 SV ⊕	Yellow
PEW 1694 SV ⊕	Blue	PEW 3294 SV ⊕	Blue	PEW 6394 SV ⊕	Blue	PEW 12594 SV ⊕	Blue
PEW 1664 SV ⊕	Red	PEW 3264 SV ⊕	Red	PEW 6364 SV ⊕	Red	PEW 12564 SV ⊕	Red
PEW 16114 SV ⊕	Red	PEW 32114 SV ⊕	Red	PEW 63114 SV ⊕	Red	PEW 125114 SV ⊕	Red
PEW 1674 SV ⊕	Black	PEW 3274 SV ⊕	Black	PEW 6374 SV ⊕	Black	PEW 12574 SV ⊕	Black
PEW 1654 SV	Black	PEW 3254 SV	Black	PEW 6354 SV	Black	PEW 12554 SV	Black
PEW 1634 SV ⊕	Red	PEW 3234 SV ⊕	Red				
PEW 1634 SV ⊕	Red	PEW 3234 SV ⊕	Red				
PEW 16104 SV ⊕	Green	PEW 32104 SV ⊕	Green				
PEW 1624 SV ⊕	Green	PEW 3224 SV ⊕	Green				
PEW 1645 SV ⊕	Yellow	PEW 3245 SV ⊕	Yellow	PEW 6345 SV ⊕	Yellow	PEW 12545 SV ⊕	Yellow
PEW 1695 SV ⊕	Blue	PEW 3295 SV ⊕	Blue	PEW 6395 SV ⊕	Blue	PEW 12595 SV ⊕	Blue
PEW 1665 SV ⊕	Red	PEW 3265 SV ⊕	Red	PEW 6365 SV ⊕	Red	PEW 12565 SV ⊕	Red
PEW 1675 SV ⊕	Black	PEW 3275 SV ⊕	Black	PEW 6375 SV ⊕	Black	PEW 12575 SV ⊕	Black
PEW 1655 SV	Black	PEW 3255 SV	Black	PEW 6355 SV	Black	PEW 12555 SV	Black
PEW 16115 SV ⊕	Red	PEW 32115 SV ⊕	Red	PEW 63115 SV ⊕	Red	PEW 125115 SV ⊕	Red
PEW 1635 SV ⊕	Red	PEW 3235 SV ⊕	Red				
PEW 1635 SV ⊕	Red	PEW 3235 SV ⊕	Red				
PEW 1625 SV ⊕	Green	PEW 3225 SV ⊕	Green				

dimensions in mm

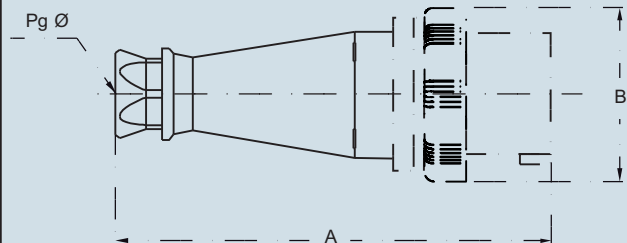
(16 / 32A) PEW ... SV



PEW...SV	A	B	ø min	ø max
16A 2P+⊕	129	70	7	16
3P+⊕	129	77	7	16
3P+N+⊕	129	86	8	24
32A 2P+⊕	150	92	8	24
3P+⊕	150	92	8	24
3P+N+⊕	150	100	8	24

dimensions in mm

(63 / 125A) PEW ... SV



PEW...SV	A	B	Pg ø
63A 2P+⊕	264.5	112	36
3P+⊕	264.5	112	36
3P+N+⊕	264.5	112	36
125A 2P+⊕	310	130	2"gas
3P+⊕	310	130	2"gas
3P+N+⊕	310	130	2"gas

- Compliant with EN 60309-1 and -2
- Enclosure, insert and spring lid in insulating, thermoplastic, self-extinguishing material
- PE...PV types 16A and 32A (IP44), RAL 7035 grey enclosure, spring lid colour coded according to the operating voltage, entry with cable gland
- PEW...PV types 16A, 32A, 63A and 125A (IP66/IP67), RAL 7035 grey enclosure, spring lid with locking ring and gasket colour coded according to the operating voltage, entry with cable gland
- PEW...PV types 63A and 125A (IP67), cable anchoring collar incorporated in the insert
- Terminals with retained screws
- 63A, 125A: with pilot contact
- Nickel-plated contacts standard on 63A and 125A (on 16A and 32A only version PHW...PV page 16)
- IP44 and IP66/IP67 degrees of protection (EN 60529)
- ® with Italian Quality Mark

16A
IP44 degree of protection



NEW

32A
IP44 degree of protection



NEW

Number of poles	Frequency Hz	Voltage V	Earthing contact position h	Part No.	Colour	Part No.	Colour
2P+⊕	50 and 60	100 - 130	4	PE 1643 PV ⊕		PE 3243 PV ⊕	
	50 and 60	200 - 250	6	PE 1663 PV ⊕		PE 3263 PV ⊕	
	50 and 60	380 - 415	9	PE 1693 PV ⊕		PE 3293 PV ⊕	
	50 and 60	480 - 500	7	PE 1673 PV ⊕		PE 3273 PV ⊕	
	50 and 60	ins. transformer	12	PE 16123 PV ⊕		PE 32123 PV ⊕	
	> 300 - 500	> 50	2	PE 1623 PV ⊕		PE 3223 PV ⊕	
	d.c.	> 50 - 250	3	PE 1633 PV ⊕		PE 3233 PV	
	d.c.	> 250	8	PE 1683 PV		PE 3283 PV	
	3P+⊕	50 and 60	100 - 130	4	PE 1644 PV ⊕		PE 3244 PV ⊕
50 and 60		200 - 250	9	PE 1694 PV ⊕		PE 3294 PV ⊕	
50 and 60		380 - 415	6	PE 1664 PV ⊕		PE 3264 PV ⊕	
60		440 - 460	11	PE 16114 PV ⊕		PE 32114 PV ⊕	
50 and 60		480 - 500	7	PE 1674 PV ⊕		PE 3274 PV ⊕	
50 and 60		600 - 690	5	PE 1654 PV		PE 3254 PV	
50		380	3	PE 1634 PV ⊕		PE 3234 PV ⊕	
60		440	3	PE 1634 PV ⊕		PE 3234 PV ⊕	
100 - 300		> 50	10	PE 16104 PV ⊕		PE 32104 PV ⊕	
> 300 - 500		> 50	2	PE 1624 PV ⊕		PE 3224 PV ⊕	
3P+N+⊕		50 and 60	57/100 - 75/130	4	PE 1645 PV ⊕		PE 3245 PV ⊕
	50 and 60	120/208 - 144/250	9	PE 1695 PV ⊕		PE 3295 PV ⊕	
	50 and 60	200/346 - 240/415	6	PE 1665 PV ⊕		PE 3265 PV ⊕	
	50 and 60	277/480 - 288/500	7	PE 1675 PV ⊕		PE 3275 PV ⊕	
	50 and 60	347/600 - 400/690	5	PE 1655 PV		PE 3255 PV	
	60	250/440 - 265/460	11	PE 16115 PV ⊕		PE 32115 PV ⊕	
	50	220/380	3	PE 1635 PV ⊕		PE 3235 PV ⊕	
	60	250/440	3	PE 1635 PV ⊕		PE 3235 PV ⊕	
	> 300 - 500	> 50	2	PE 1625 PV ⊕		PE 3225 PV ⊕	

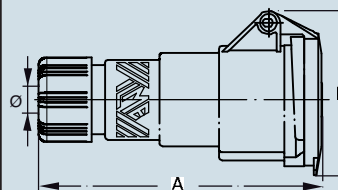
Legend

A.V. = Colour according to voltage

(*) Green may be used together with the colour of the operating range for frequencies above 60 Hz and up to a maximum of 500 Hz.

dimensions in mm

(16 / 32A) PE ... PV



PE...PV	A	B	Ø min	Ø max
16A 2P+⊕	146	74.5	7	16
3P+⊕	146	84.5	7	16
3P+N+⊕	146	92.5	8	24
32A 2P+⊕	163	102	8	24
3P+⊕	163	102	8	24
3P+N+⊕	163	105	8	24

dimensions shown are not binding and may be changed without notice

PEW...PV coupler socket-outlets, low voltage from over 50V up to 690V



16A
IP66/IP67 degrees of protection



NEW

32A
IP66/IP67 degrees of protection



NEW

63A
IP67 degree of protection



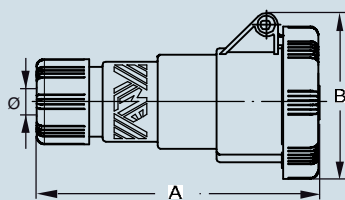
125A
IP67 degree of protection



Part No.	Colour	Part No.	Colour	Part No.	Colour	Part No.	Colour
PEW 1643 PV ⊕	Yellow	PEW 3243 PV ⊕	Yellow	PEW 6343 PV ⊕	Yellow	PEW 12543 PV ⊕	Yellow
PEW 1663 PV ⊕	Blue	PEW 3263 PV ⊕	Blue	PEW 6363 PV ⊕	Blue	PEW 12563 PV ⊕	Blue
PEW 1693 PV ⊕	Red	PEW 3293 PV ⊕	Red	PEW 6393 PV ⊕	Red	PEW 12593 PV ⊕	Red
PEW 1673 PV ⊕	Black	PEW 3273 PV ⊕	Black	PEW 6373 PV ⊕	Black	PEW 12573 PV ⊕	Black
PEW 16123 PV ⊕	A.V.	PEW 32123 PV ⊕	A.V.	PEW 63123 PV ⊕	A.V.	PEW 125123 PV ⊕	A.V.
PEW 1623 PV ⊕	Green	PEW 3223 PV ⊕	Green	PEW 63123 PV ⊕	Green	PEW 125123 PV ⊕	Green
PEW 1633 PV ⊕	A.V.	PEW 3233 PV	A.V.	PEW 6333 PV	A.V.	PEW 12533 PV	A.V.
PEW 1683 PV	A.V.	PEW 3283 PV	A.V.	PEW 6383 PV	A.V.	PEW 12583 PV	A.V.
PEW 1644 PV ⊕	Yellow	PEW 3244 PV ⊕	Yellow	PEW 6344 PV ⊕	Yellow	PEW 12544 PV ⊕	Yellow
PEW 1694 PV ⊕	Blue	PEW 3294 PV ⊕	Blue	PEW 6394 PV ⊕	Blue	PEW 12594 PV ⊕	Blue
PEW 1664 PV ⊕	Red	PEW 3264 PV ⊕	Red	PEW 6364 PV ⊕	Red	PEW 12564 PV ⊕	Red
PEW 16114 PV ⊕	Red	PEW 32114 PV ⊕	Red	PEW 63114 PV ⊕	Red	PEW 125114 PV ⊕	Red
PEW 1674 PV ⊕	Black	PEW 3274 PV ⊕	Black	PEW 6374 PV ⊕	Black	PEW 12574 PV ⊕	Black
PEW 1654 PV	Black	PEW 3254 PV	Black	PEW 6354 PV	Black	PEW 12554 PV	Black
PEW 1634 PV ⊕	Red	PEW 3234 PV ⊕	Red	PEW 6334 PV	Red	PEW 12534 PV	Red
PEW 1634 PV ⊕	Red	PEW 3234 PV ⊕	Red	PEW 6334 PV	Red	PEW 12534 PV	Red
PEW 16104 PV ⊕	Green	PEW 32104 PV ⊕	Green	PEW 63104 PV ⊕	Green	PEW 125104 PV ⊕	Green
PEW 1624 PV ⊕	Green	PEW 3224 PV ⊕	Green	PEW 6324 PV ⊕	Green	PEW 12524 PV ⊕	Green
PEW 1645 PV ⊕	Yellow	PEW 3245 PV ⊕	Yellow	PEW 6345 PV ⊕	Yellow	PEW 12545 PV ⊕	Yellow
PEW 1695 PV ⊕	Blue	PEW 3295 PV ⊕	Blue	PEW 6395 PV ⊕	Blue	PEW 12595 PV ⊕	Blue
PEW 1665 PV ⊕	Red	PEW 3265 PV ⊕	Red	PEW 6365 PV ⊕	Red	PEW 12565 PV ⊕	Red
PEW 1675 PV ⊕	Black	PEW 3275 PV ⊕	Black	PEW 6375 PV ⊕	Black	PEW 12575 PV ⊕	Black
PEW 1655 PV	Black	PEW 3255 PV	Black	PEW 6355 PV	Black	PEW 12555 PV	Black
PEW 16115 PV ⊕	Red	PEW 32115 PV ⊕	Red	PEW 63115 PV ⊕	Red	PEW 125115 PV ⊕	Red
PEW 1635 PV ⊕	Red	PEW 3235 PV ⊕	Red	PEW 6335 PV	Red	PEW 12535 PV	Red
PEW 1635 PV ⊕	Red	PEW 3235 PV ⊕	Red	PEW 6335 PV	Red	PEW 12535 PV	Red
PEW 1625 PV ⊕	Green	PEW 3225 PV ⊕	Green	PEW 6325 PV ⊕	Green	PEW 12525 PV ⊕	Green

dimensions in mm

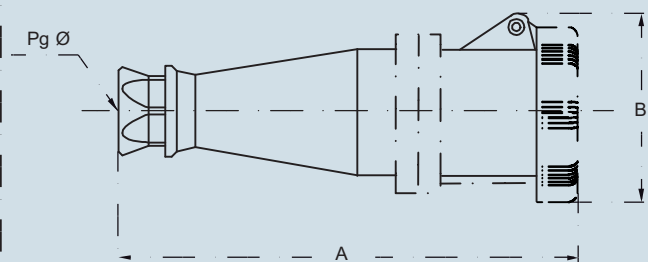
(16 / 32A) PEW ... PV



PEW...PV	A	B	ø min	ø max
16A 2P+⊕	145	77	7	16
3P+⊕	145	85	7	16
3P+N+⊕	145	93	8	24
32A 2P+⊕	162	97	8	24
3P+⊕	162	97	8	24
3P+N+⊕	162	105	8	24

dimensions in mm

(63 / 125A) PEW ... PV



PEW...PV	A	B	Pg ø
63A 2P+⊕	277	108.5	36
3P+⊕	277	108.5	36
3P+N+⊕	277	108.5	36
125A 2P+⊕	324	120.5	2"gas
3P+⊕	324	120.5	2"gas
3P+N+⊕	324	120.5	2"gas