

MIXO modular units 1 or 4 poles + shield (each connector) 10A - 50V

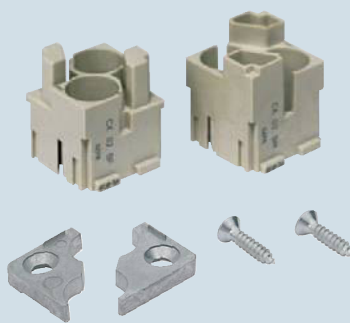


the modular inserts must be installed in suitable frames which in turn are installed in traditional housings or COB panel support

frames for modular units page: 195

- characteristics according to EN 61984:
- **10A 50V 0,8kV 3**
- UL, CSA, CCC certified
- rated voltage according to UL/CSA: 50V
- insulation resistance: $\geq 10 \text{ G}\Omega$
- ambient temperature limit:
 - 40 °C ... +70 °C (CX 01 B and CX 04 B)
- are made of self-extinguishing thermoplastic resin UL 94 V0
- mechanical life: ≥ 500 cycles
- contact resistance: $\leq 3 \text{ m}\Omega$ (no CX 02 B)
- coaxial connector CX 01 B **cables with a typical impedance of 75 Ω** (attenuation see page 501)
- CX 04 B multiaxial connector for STP cables with 2 pairs and terminations compliant with EN 50173-1 Cat. 5 (100 MHz), compatible with 4-wire field bus protocols
- extraction tool for BUS shielded connectors from MIXO BUS insert part No. CX BES see page 440

seat for shielded connectors metal adaptor



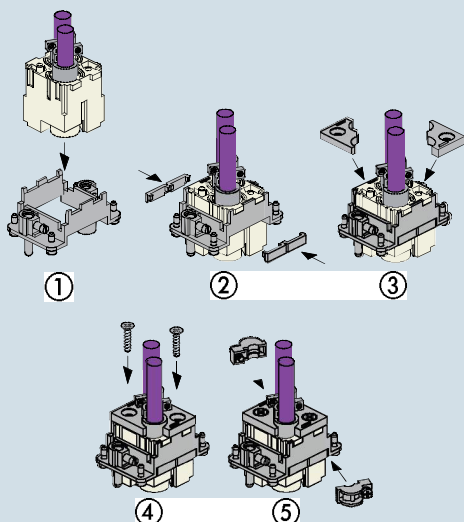
shielded connectors 10A crimp contacts, silver or gold plated



description	part No.	part No.	part No.
seat for two shielded connectors - female insert, two seats for BUS connectors - male insert, two seats for BUS connectors	CX 02 BF CX 02 BM		
shielded BUS multi axial connectors, 4 poles + shield - female insert, four contact seats + shield - male insert, four contact seats + shield		CX 04 BF CX 04 BM	
shielded BUS coaxial connectors, 1 pole + shield - female insert, one contact seats + shield - male insert, one contact seats + shield		CX 01 BF CX 01 BM	
metal adaptor (optional)	CR GND		
10A female crimp contacts 0.14-0.37 mm ² AWG 26-22 0.5 mm ² AWG 20 0.75 mm ² AWG 18 1 mm ² AWG 18 1.5 mm ² AWG 16 2.5 mm ² AWG 14		silver plated CDFA 0.3 CDFA 0.5 CDFA 0.7 CDFA 1.0 CDFA 1.5 CDFA 2.5	gold plated CDFD 0.3 CDFD 0.5 CDFD 0.7 CDFD 1.0 CDFD 1.5 CDFD 2.5
10A male crimp contacts 0.14-0.37 mm ² AWG 26-22 0.5 mm ² AWG 20 0.75 mm ² AWG 18 1 mm ² AWG 18 1.5 mm ² AWG 16 2.5 mm ² AWG 14		silver plated CDMA 0.3 CDMA 0.5 CDMA 0.7 CDMA 1.0 CDMA 1.5 CDMA 2.5	gold plated CDMD 0.3 CDMD 0.5 CDMD 0.7 CDMD 1.0 CDMD 1.5 CDMD 2.5

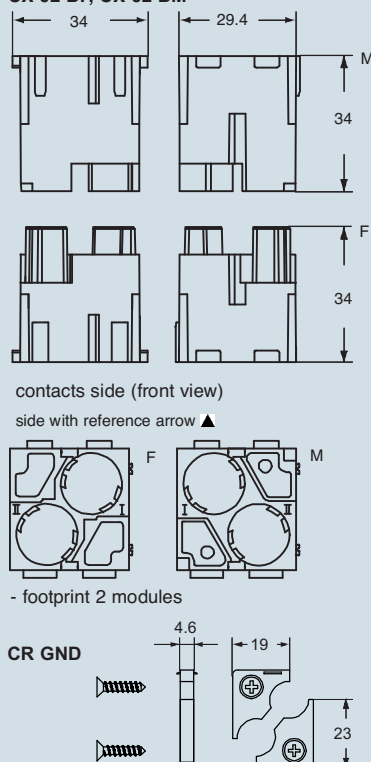
Note:
The shielded connectors have their shield insulated from the enclosure's earthing point.
If you wish to earth-connect the shield, install on the panel an anchorage for shielded cables CR..ST (see page 425) or the CR GND metal adaptor.

Use of the CR GND metal adaptor

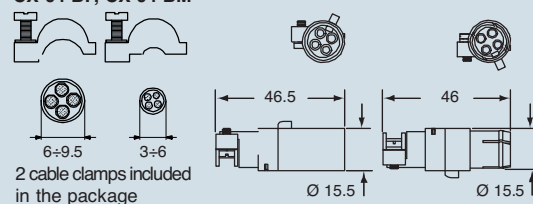


dimensions shown are not binding and may be changed without notice

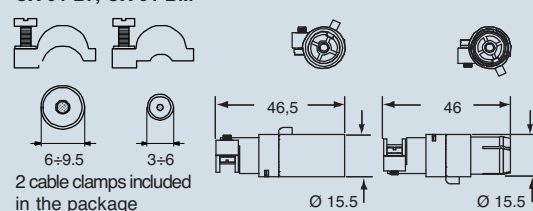
dimensions in mm CX 02 BF, CX 02 BM



CX 04 BF, CX 04 BM



CX 01 BF, CX 01 BM



- conductors stripping length see page 178
- crimp contacts dimensions (CDF and CDM) see page 178
- for contact crimping, see the crimp tool section (10A contacts, CDF and CDM series) on pages 466, 470, 480, 482, 484, 486

MIXO modular units 8 poles + shield (each connector) 5A - 50V



the modular inserts must be installed in suitable frames which are then mounted in traditional housings or COB panel support

frames for modular units page: 195

- characteristics according to EN 61984:

5A 50V 0,8kV 3

- UL, CSA, CCC, GOST certified

- rated voltage according to UL/CSA: 50V

- insulation resistance: $\geq 10 \text{ G}\Omega$

- ambient temperature limit: $-40^\circ\text{C} \dots +70^\circ\text{C}$ (CX 08 B)

- are made of self-extinguishing thermoplastic resin UL 94 V0

- mechanical life: ≥ 500 cycles

- maximum \varnothing of the insulator: 2.4 mm

- for crimp 5A contacts CI series using:

CIPZ D crimping tool

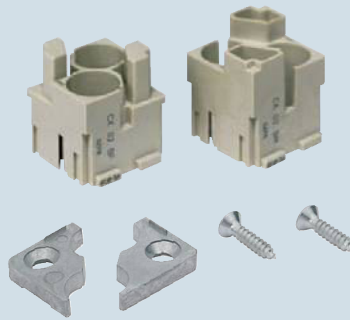
CITP D turret head

CIES insertion / removal tool

- extraction tool for BUS shielded connectors from

MIXO BUS insert part No. CX BES see page 440

seat for shielded connectors
metal adaptor



shielded connectors
5A crimp contacts, gold plated



NEW

description

part No.

part No.

seat for two shielded connectors

- female insert, two seats for BUS connectors

- male insert, two seats for BUS connectors

CX 02 BF
CX 02 BM

shielded BUS multi axial connectors, 8 poles + shield

- female insert, eight contact seats + shield

- male insert, eight contact seats + shield

CX 08 BF
CX 08 BM

metal adaptor (optional)

CR GND

5A female crimp contacts

0.08-0.21 mm² AWG 24-28

0.13-0.33 mm² AWG 26÷20

0.33-0.52 mm² AWG 20-22

CIFD 0.2
CIFD 0.3
CIFD 0.5

5A male crimp contacts

0.08-0.21 mm² AWG 24-28

0.13-0.33 mm² AWG 26÷20

0.33-0.52 mm² AWG 20-22

CIMD 0.2
CIMD 0.3
CIMD 0.5

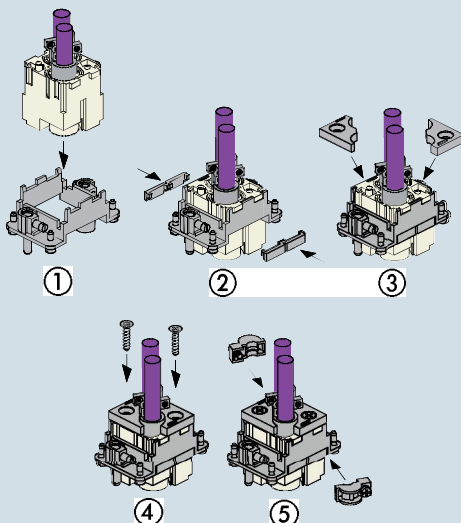
gold plated

Note:

The shielded connectors have their shield insulated from the enclosure's earthing point.

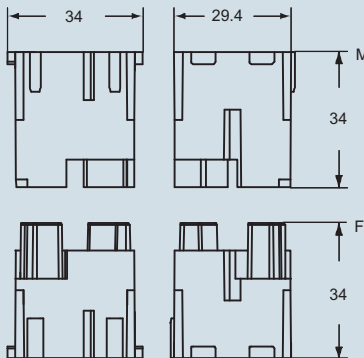
If you wish to earth-connect the shield, install on the panel an anchorage for shielded cables CR..ST (see page 425) or the CR GND metal adaptor.

Use of the CR GND metal adaptor



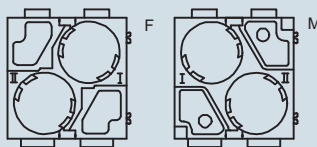
dimensions in mm

CX 02 BF, CX 02 BM



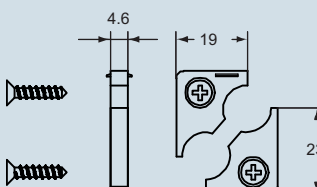
contacts side (front view)

side with reference arrow ▲

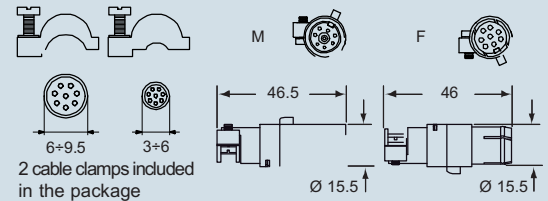


- 2 frame slots

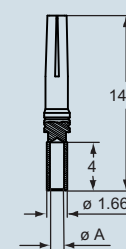
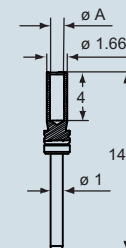
CR GND



CX 08 BF, CX 08 BM



CIF and CIM



CIF, CIM contacts

conductor section	conductor slot	conductors stripping length
mm ²	$\varnothing A$ (mm)	(mm)
0,08-0,21	0,64	4
0,13-0,33	0,90	4
0,33-0,52	1,12	4

dimensions shown are not binding
and may be changed without notice

MIXO modular units 1 pole + shield (each connector) 16A - 50V



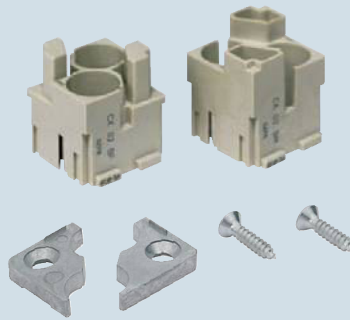
the modular inserts must be installed in suitable frames which are then mounted in traditional housings or COB panel support

frames for modular units page: 195

- characteristics according to EN 61984:

- 16A 50V 0,8kV 3**
- UL, CSA, CCC, GOST certified
- rated voltage according to UL/CSA: 50V
- insulation resistance: $\geq 10 \text{ G}\Omega$
- ambient temperature limit: $-40^\circ\text{C} \dots +70^\circ\text{C}$ (CX 01 BC)
- are made of self-extinguishing thermoplastic resin UL 94 V0
- mechanical life: ≥ 500 cycles
- contact resistance: $\leq 1 \text{ m}\Omega$ (no CX 02 B)
- CX 01 BC shielded connector for **cable with a typical impedance of 50 Ω** (attenuation see page 501)
- for contact crimping instructions, please see the crimping tool section (16A contacts, CCF and CCM series) on pages 466, 470, 480, 482, 484, 486
- extraction tool for BUS shielded connectors from MIXO BUS insert part No. CX BES see page 440

seat for shielded connectors
metal adaptor



shielded connectors
16A crimp contacts, silver or gold plated



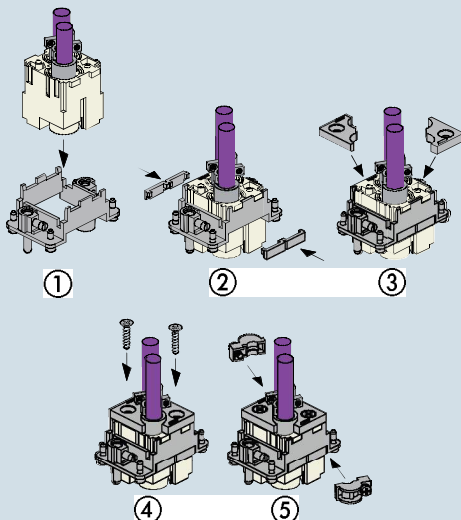
NEW

description	part No.	part No.	part No.
seat for two shielded connectors - female insert, two seats for BUS connectors - male insert, two seats for BUS connectors	CX 02 BF CX 02 BM		
shielded BUS coaxial connectors, 1 pole + shield - female insert, one contact seats + shield - male insert, one contact seats + shield		CX 01 BCF CX 01 BCM	
metal adaptor (optional)	CR GND		
16A female contacts 0.14-0.37 mm ² AWG 26-22 three grooves 0.5 mm ² AWG 20 with no grooves 0.75 mm ² AWG 18 one groove (back side) 1 mm ² AWG 18 one groove 1.5 mm ² AWG 16 two grooves 2.5 mm ² AWG 14 three grooves 3 mm ² AWG 12 one wide groove 4 mm ² AWG 12 with no grooves 16A male contacts 0.14-0.37 mm ² AWG 26-22 three grooves 0.5 mm ² AWG 20 with no grooves 0.75 mm ² AWG 18 one groove (back side) 1 mm ² AWG 18 one groove 1.5 mm ² AWG 16 two grooves 2.5 mm ² AWG 14 three grooves 3 mm ² AWG 12 one wide groove 4 mm ² AWG 12 with no grooves		silver plated CCFA 0.3 CCFA 0.5 CCFA 0.7 CCFA 1.0 CCFA 1.5 CCFA 2.5 CCFA 3.0 CCFA 4.0 CCMA 0.3 CCMA 0.5 CCMA 0.7 CCMA 1.0 CCMA 1.5 CCMA 2.5 CCMA 3.0 CCMA 4.0	gold plated CCFD 0.3 CCFD 0.5 CCFD 0.7 CCFD 1.0 CCFD 1.5 CCFD 2.5 CCFD 3.0 CCFD 4.0 CCMD 0.3 CCMD 0.5 CCMD 0.7 CCMD 1.0 CCMD 1.5 CCMD 2.5 CCMD 3.0 CCMD 4.0

Note:

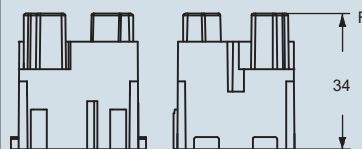
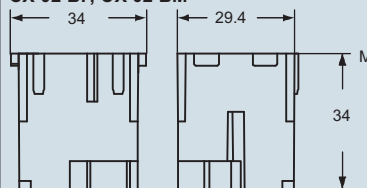
The shielded connectors have their shield insulated from the enclosure's earthing point.
If you wish to earth-connect the shield, install on the panel an anchorage for shielded cables CR..ST (see page 425) or the CR GND metal adaptor.

Use of the CR GND metal adaptor



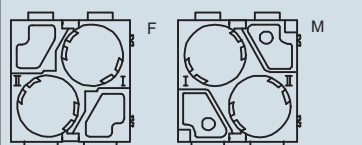
dimensions shown are not binding
and may be changed without notice

dimensions in mm
CX 02 BF, CX 02 BM



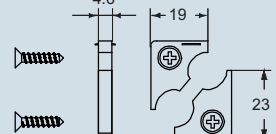
contacts side (front view)

side with reference arrow ▲

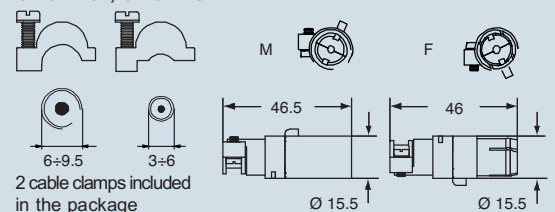


- 2 frame slots

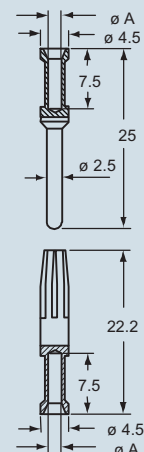
CR GND



CX 01 BCF, CX 01 BCM

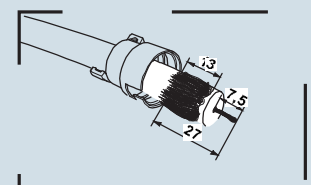


CCF and CCM



CCF and CCM contacts

conductor section mm ²	conductor slot $\varnothing A$ (mm)	conductors stripping length (mm)
0.14-0.37	0.9	7.5
0.5	1.1	7.5
0.75	1.3	7.5
1.0	1.45	7.5
1.5	1.8	7.5
2.5	2.2	7.5
3	2.55	7.5
4	2.85	7.5



the modular inserts must be installed in suitable frames which are then mounted in traditional housings or COB panel support

frames for modular units page: 195

- characteristics according to EN 61984:

10A 250V 4kV 3

- insulation resistance: $\geq 10 \text{ G}\Omega$

- are made of self-extinguishing thermoplastic resin UL 94 V0

- mechanical life: ≥ 500 cycles

- contact resistance: $\leq 3 \text{ m}\Omega$

- for contact crimping, see the crimp tool section (10A contacts, CDF and CDM series) on pages 466, 470, 480, 482, 484, 486

WARNING: ,the female inserts can only be used on high or flush mounting enclosures

housing for RJ45 connectors,
RJ45 connectors



10A crimp contacts
silver and gold plated



description	part No.	part No.	part No.
without RJ45 connector and without contacts (to be ordered separately)			
- socket inserts for 1 RJ45 female connector and for 4 10A (CDF) female contacts	CX 01 JF		
- plug inserts for 1 RJ45 male connector and for 4 10A (CDM) male contacts	CX 01 JM		
- RJ45 female connector, 8 data contacts	CX 8 JF *		
- RJ45 female connector, 8 data contacts / 2 power contacts	CX 8/2 JF *		
- RJ45 male connector, 4 data contacts	CX 4 JM		
- RJ45 male connector, 4 data contacts / 2 power contacts	CX 4/2 JM		
- RJ45 male connector, 6 data contacts / 2 power contacts	CX 6/2 JM		
- RJ45 male connector, 8 data contacts	CX 8 JM		
- RJ45 male connector, 4 data contacts cat. 5 e	CX 4E JM		
10A female crimp contacts			
0.14-0.37 mm ² AWG 26-22		CDFA 0.3	CDFD 0.3
0.5 mm ² AWG 20		CDFA 0.5	CDFD 0.5
0.75 mm ² AWG 18		CDFA 0.7	CDFD 0.7
1 mm ² AWG 18		CDFA 1.0	CDFD 1.0
1.5 mm ² AWG 16		CDFA 1.5	CDFD 1.5
2.5 mm ² AWG 14		CDFA 2.5	CDFD 2.5
10A male crimp contacts			
0.14-0.37 mm ² AWG 26-22		CDMA 0.3	CDMD 0.3
0.5 mm ² AWG 20		CDMA 0.5	CDMD 0.5
0.75 mm ² AWG 18		CDMA 0.7	CDMD 0.7
1 mm ² AWG 18		CDMA 1.0	CDMD 1.0
1.5 mm ² AWG 16		CDMA 1.5	CDMD 1.5
2.5 mm ² AWG 14		CDMA 2.5	CDMD 2.5

* 4 pole version on request, part No. **CX 4 JF** and **CX 4/2 JF** with "crossover" link

RJ45 connector features:

- RJ45 insert, Class 5 Ethernet

- nominal current: 2.1A at 70 °C

- nominal voltage: 50VDC / 35VAC

- IDC terminal:

for 0.22 mm² - 0.24 mm² (AWG 24) data cables
for 0.34 mm² - 0.38 mm² (AWG 22) power cables

- temperature range: from -40°C to 120 °C

- nickel plated brass screening

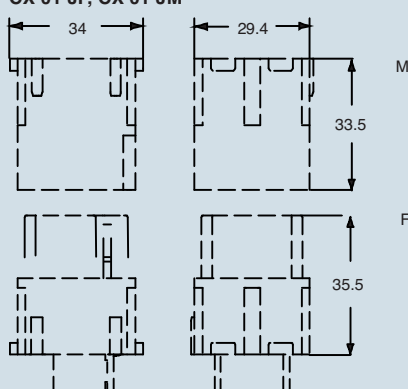
- crimp pliers: **CJPZY**

- screened cable stripper: **CJST**

crimp contacts dimensions (CDF and CDM) see page 178

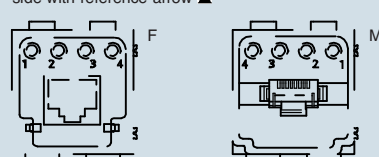
dimensions in mm

CX 01 JF, CX 01 JM



contacts side (front view)

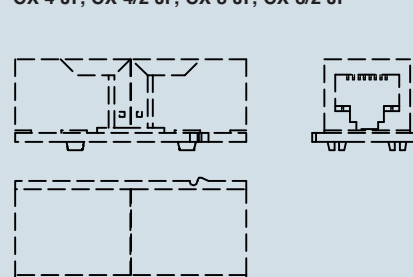
side with reference arrow ▲



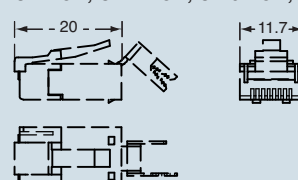
- footprint 2 modules

dimensions in mm

CX 4 JF, CX 4/2 JF, CX 8 JF, CX 8/2 JF



CX 4 JM, CX 4/2 JM, CX 6/2 JM, CX 8 JM, CX 4E JM



dimensions shown are not binding
and may be changed without notice

the modular inserts must be installed in suitable frames which are then mounted in traditional housings or COB panel support

frames for modular units page: 195

- characteristics according to EN 61984:

10A 250V 4kV 3

- insulation resistance: $\geq 10 \text{ G}\Omega$

- are made of self-extinguishing thermoplastic resin UL 94 V0

- mechanical life: ≥ 500 cycles

- contact resistance: $\leq 3 \text{ m}\Omega$

- for contact crimping, see the crimp tool section (10A contacts, CDF and CDM series) on pages 466, 470, 480, 482, 484, 486

WARNING: the female inserts can only be used on high or flush mounting enclosures

housing for RJ45 connectors,
RJ45 connectors



10A crimp contacts
silver and gold plated



description

part No.

part No.

part No.

without RJ45 connector and without contacts
(to be ordered separately)

- socket inserts for 2 RJ45 female connectors and for 8 10A (CDF) female contacts

CX 02 JF

- plug inserts for 2 RJ45 male connectors and for 8 10A (CDM) male contacts

CX 02 JM

- RJ45 female connector, 8 data contacts

CX 8 JF *

- RJ45 female connector, 8 data contacts / 2 power contacts

CX 8/2 JF *

- RJ45 male connector, 4 data contacts

CX 4 JM

- RJ45 male connector, 4 data contacts / 2 power contacts

CX 4/2 JM

- RJ45 male connector, 6 data contacts / 2 power contacts

CX 6/2 JM

- RJ45 male connector, 8 data contacts

CX 8 JM

- RJ45 male connector, 4 data contacts cat. 5 e

CX 4E JM

10A female crimp contacts

0.14-0.37 mm² AWG 26-22

0.5 mm² AWG 20

0.75 mm² AWG 18

1 mm² AWG 18

1.5 mm² AWG 16

2.5 mm² AWG 14

10A male crimp contacts

0.14-0.37 mm² AWG 26-22

0.5 mm² AWG 20

0.75 mm² AWG 18

1 mm² AWG 18

1.5 mm² AWG 16

2.5 mm² AWG 14

CDFA 0.3

CDFA 0.5

CDFA 0.7

CDFA 1.0

CDFA 1.5

CDFA 2.5

silver plated

CDFD 0.3

CDFD 0.5

CDFD 0.7

CDFD 1.0

CDFD 1.5

CDFD 2.5

gold plated

CDMA 0.3

CDMA 0.5

CDMA 0.7

CDMA 1.0

CDMA 1.5

CDMA 2.5

CDMD 0.3

CDMD 0.5

CDMD 0.7

CDMD 1.0

CDMD 1.5

CDMD 2.5

* 4 pole version on request, part No. **CX 4 JF** and **CX 4/2 JF** with "crossover" link

RJ45 connector features:

- RJ45 insert, Class 5 Ethernet

- nominal current: 2.1A at 70 °C

- nominal voltage: 50VDC / 35VAC

- IDC terminal:

for 0.22 mm² - 0.24 mm² (AWG 24) data cables
for 0.34 mm² - 0.38 mm² (AWG 22) power cables

- temperature range: from -40°C to 120 °C

- nickel plated brass screening

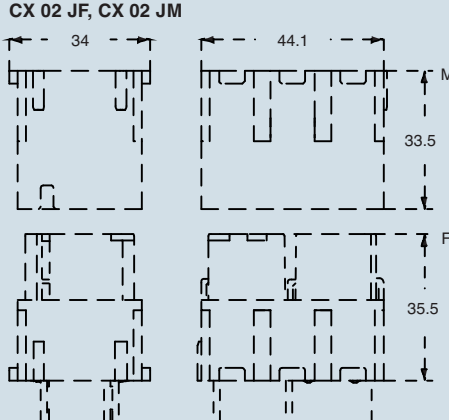
- crimp pliers: **CJPZY**

- screened cable stripper: **CJST**

crimp contacts dimensions (CDF and CDM) see page 178

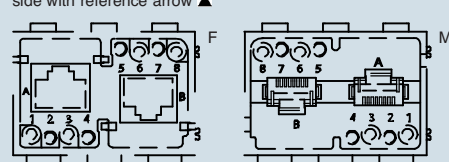
dimensions in mm

CX 02 JF, CX 02 JM



contacts side (front view)

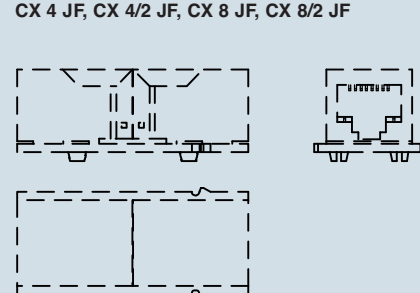
side with reference arrow ▲



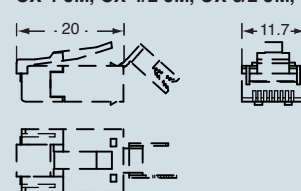
- footprint 3 modules

dimensions in mm

CX 4 JF, CX 4/2 JF, CX 8 JF, CX 8/2 JF



CX 4 JM, CX 4/2 JM, CX 6/2 JM, CX 8 JM, CX 4E JM



dimensions shown are not binding
and may be changed without notice

the modular inserts must be installed in suitable frames which are then mounted in traditional housings or COB panel support

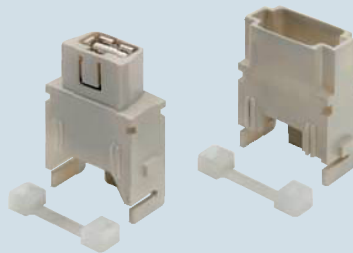
housing for USB male connectors,
USB female - female connectors

patch cable USB

frames for modular units page: 194 - 195

WARNING

enclosures: bulkhead mounting housings, high construction housings or high construction hoods



NEW



NEW

description

part No.

part No.

- female insert with USB female - female connector
- male insert without USB male connector (patch cable to be ordered separately)

CX 01 UF
CX 01 UM

patch cable USB-A / USB-A, 2 m **

CW 2 UAM

** 5 m on request

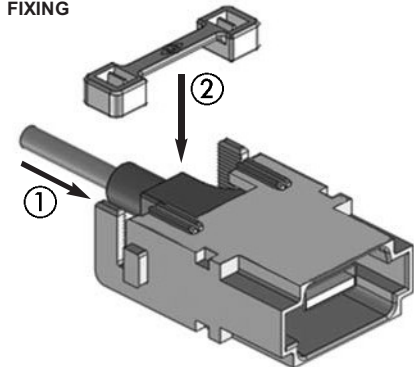
dimensions in mm

dimensions in mm

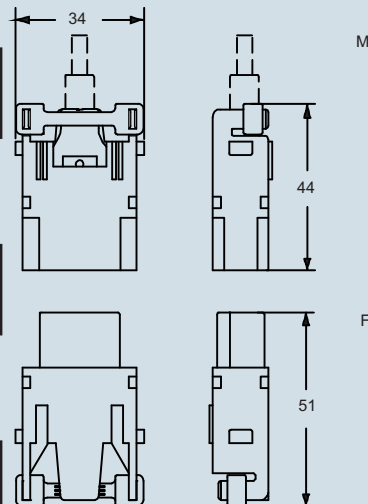
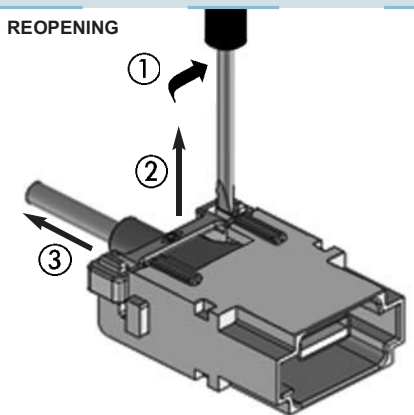
USB connector features:

- USB-A / USB-A Hi-Speed - 2.0 insert
- temperature range: from -25 °C to +80 °C

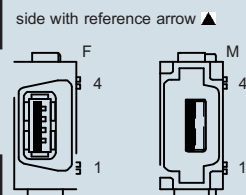
FIXING



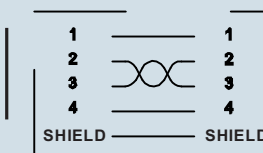
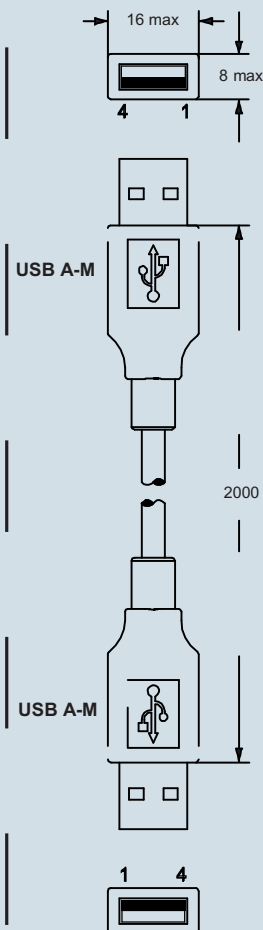
REOPENING



contacts side (front view)



- 1 frame slot



dimensions shown are not binding
and may be changed without notice

MIXO modular units for 9-pole crimp D-SUB connector



the modular inserts must be installed in suitable frames which are then mounted in traditional housings * or COB panel support

frames for modular units * page:194 - 195

* enclosures: housings or high construction hoods

- characteristics according to EN 61984:

5A 50V 0,8kV 3

- for crimp 5A contacts CI series using:

CIPZ D crimping tool

CIVTP D turret head

CIVES insertion / removal tool

module adapter for 1 D-SUB connector



5A crimp contacts for D-SUB, gold plated



description

part No.

part No.

seat for 1 D-SUB connector and shield (included)

- female insert with connector

- male insert with connector

CX 01 9VF

CX 01 9VM

5A female crimp contacts

0.08-0.13 mm² AWG 28-26

0.20-0.52 mm² AWG 24-20

5A male crimp contacts

0.08-0.13 mm² AWG 28-26

0.20-0.52 mm² AWG 24-20

CIVFD 0.1

CIVFD 0.5

CIVMD 0.1

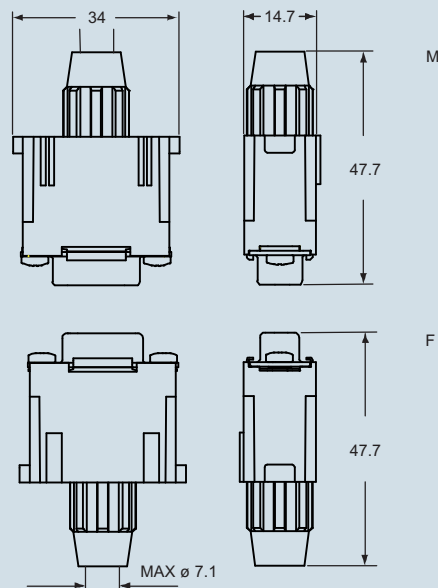
CIVMD 0.5

gold plated

we recommend the use of CRF CX / CRM CX code pins

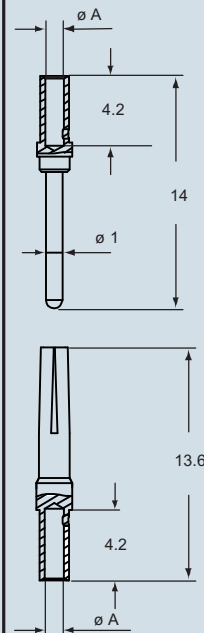
dimensions in mm

CX 01 9VF, CX 01 9VM



dimensions in mm

CIVF and CIVM



Required material:

- Seat for 1 D-SUB connector (without connector and shield):

CX 01 VM (for male connector)

CX 01 VF (for female connector)

Can also be used with 15-pole D-SUB Hi-Density connectors.

For further information, please contact I.L.M.E. SpA.



- Special version with cable contacts section 0.32-0.82 mm² AWG 22-18

CIVFD 0.8 female

CIVMD 0.8 male

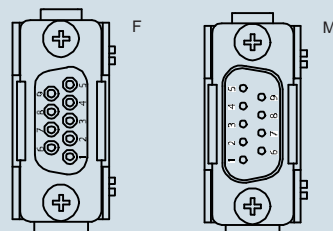


- CR CX VS shield for CX 01 VM/VF inserts



contacts side (front view)

side with reference arrow ▲

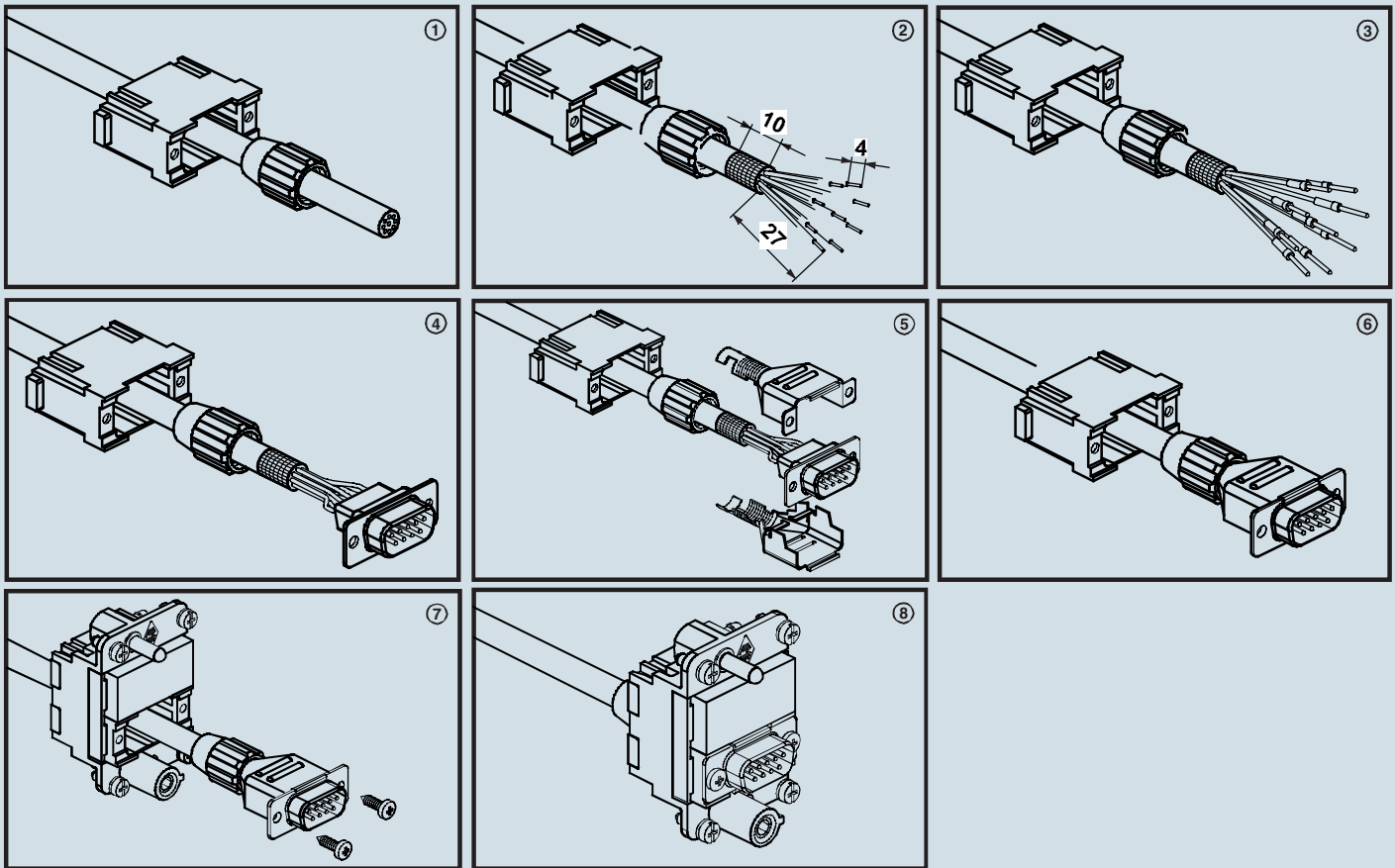


- footprint 1 module

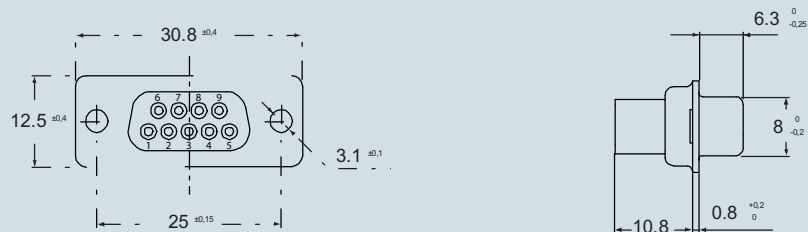
CIVF and CIVM contacts

conductor section mm ²	conductor slot ø A (mm)	conductors stripping length (mm)
0.08+0.13	0.63	4
0.20+0.52	1.14	4

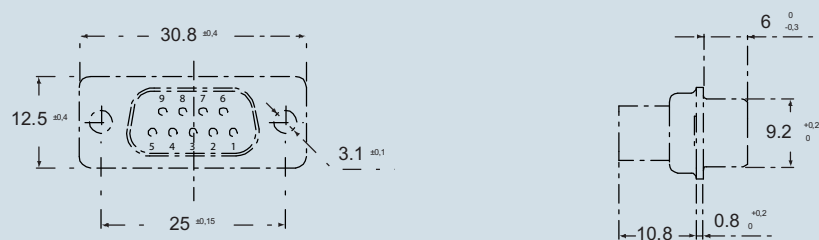
dimensions shown are not binding and may be changed without notice



9-pole female CRIMP D-SUB connector (can be used with CX 01 VF)



9-pole male CRIMP D-SUB connector (can be used with CX 01 VM)



dimensions in mm

the modular inserts must be installed in suitable frames which are then mounted in traditional housings or COB panel support

frames for modular units

page:

194-195 *

* refer to CN.12 catalogue page

- characteristics according to EN 61984:

- 1A 50V 0,8kV 3**
- insulation resistance: $\geq 10 \text{ G}\Omega$
- are made of self-extinguishing thermoplastic resin UL 94 V0
- mechanical life: ≥ 500 cycles
- temperature range: from -40°C to $+70^\circ\text{C}$
- we recommend to fix the cable with cable tie

WARNING: inserts can be used on high enclosures or bulkhead housings only.

housing for RJ45 male connectors, RJ45 female connectors



AVAILABLE

crimp and IDC termination, RJ45 male connectors



AVAILABLE

description	part No.	part No.
<ul style="list-style-type: none"> - socket insert with 1 RJ45 female connector, - plug inserts for 1 RJ45 male crimp connector, 8 data contacts (without RJ45 connector, to be ordered separately) - plug insert for 1 RJ45 male IDC connector, 8 data contacts (without RJ45 connector, to be ordered separately) 	CX 01 J8F CX 01 J8M CX 01 J8IM **	
<ul style="list-style-type: none"> - RJ45 male crimp connector, 8 data contacts - RJ45 male IDC connector, 8 data contacts 		CX 8 J6M CX 8 J6IM *
CX 01 J8F technical data: <ul style="list-style-type: none"> - RJ45 female insert, Cat. 6 Class E_A (Telegärtner) - shielding housing: zinc diecast - housing finish: nickel-plated - current carrying capacity at 50°C: 1A - adequate for Power over Ethernet: PoE according to IEEE 802.3af - connectors: IEC 60603-7-5 - adequate for 10 Gigabit Ethernet: 10 Gigabit Ethernet acc. to IEEE 802.3an - custom-designed cabling systems: PROFINET Installation Guideline - generic cabling systems: ANSI/TIA/EIA-568-C.2 ISO/IEC 11801 EN50173-1 ISO/IEC 24702 EN 61918 - class E_A (channel): ISO/IEC 11801, EN 50173-1 	dimensions in mm CX 01 J8F CX 01 J8M CX 01 J8IM ** 	dimensions in mm CX 8 J6M can be used with CX 01 J8M CX 8 J6IM can be used with CX 01 J8IM

dimensions shown are not binding and may be changed without notice

** CX 01 J8IM: to be used with high enclosures (T-Type hood M32/M40 only and CZA/MZAV top entry hood only), bulkhead housings or COB ... BC/TCQ/TSF/TSFS only.

with 2 RJ45 male connectors



AVAILABLE

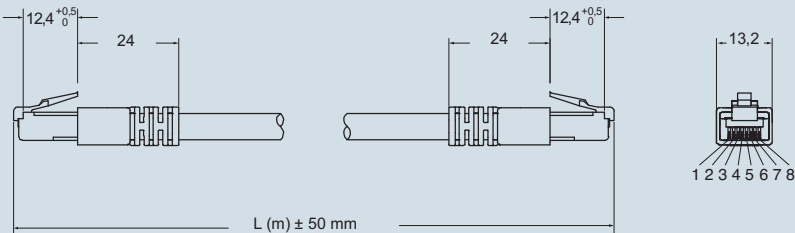
description	part No.	(L) meter
RJ45 male connector with 8 data contacts	CW 1 J2M87	1
	CW 2 J2M87	2
	CW 3 J2M87	3
	CW 5 J2M87	5
	CW 7.5 J2M87	7,5
	CW 10 J2M87	10
	CW 15 J2M87	15

RJ45 patch cord technical data (Telegärtner):
- S/FTP Cat. 7 PUR
- temperature range: from -40 °C + +75 °C
- nickel plated brass screening
- green RAL 6018 colour

Can be used with:
- MIXO RJ45 CX 01 J8M male inserts

dimensions in mm

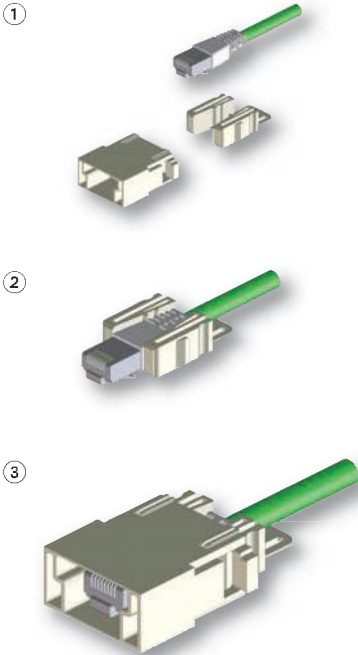
CW...J2M87



Wiring Diagram

1	1
2	2
3	3
4	4
5	5
6	6
7	7
8	8
S	S

RJ45 male assembly



dimensions shown are not binding
and may be changed without notice