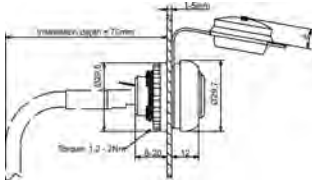


# Actuator sensor interface · RJ45 panel connector

RJ45 panel connector for front installation 22.5 mm  
female/female 1:1  
Category 5e/6

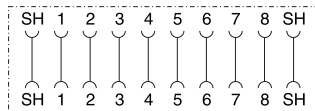


### Dimensions

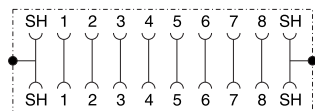


### Circuit diagram

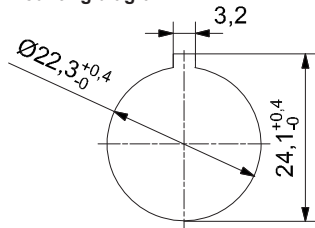
#### 492075



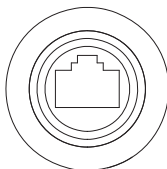
#### 491075



### Mounting diagram



front view:



Description	Part-No.	Type	PU
<b>Category</b>			
Cat.5e	492075	RJ45 F/F 8/8 Cat.5e	1
Cat.6	491075	RJ45 F/F 8/8 Cat.6	1

Technical data	492075	491075
Nominal voltage		AC 24 V
Nominal voltage range	AC 50 V	AC 150 V
Rated current		1.5 A
Number of terminations		8
Cable length (m)		–
Rate of transmission	100 MHz	250 MHz
Category	5e	6
Contact type		1 : 1
Shielding	shield connected through	360° shielding
Coding		–

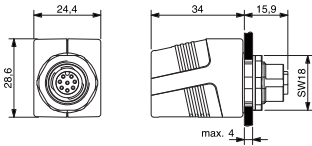
General	
Form	RJ45
Rated insulation voltage (EN 50178)	–
Test voltage	–
Pollution degree	3
Insulation resistance	≥100 MΩ
Contact resistance	≤30 mΩ
Class of flammability according to UL 94	V0
Protection class	IP 65 and NEMA UL Type 12 in closed and IP 20 in inserted condition
Housing material	PA-GF25; PBT Gf20; cover TPU
Cover	TPU
Contact material	CuSn, gold-plated
Field installation	Front plate cutout D=22.5mm
Installation depth	approx. 70 mm
Cable construction	8 (4-pair)
Cable jacket	–
Cable diameter	–
Bending radius	–
Operation temperature range	-25 °C – 70 °C
Storage temperature range	-25 °C – 80 °C
Mechanical service life	<750 insertion cycles
Dimension	(?×D) 29.5 × 29 mm
Weight (kg/piece)	0.016
Approvals	cULus
Standards	–

# Actuator sensor interface · RJ45 panel connector

## Control cabinet bushing M12 - RJ45 female/female 1:1 Category 5e

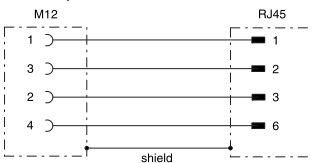


### Dimensions

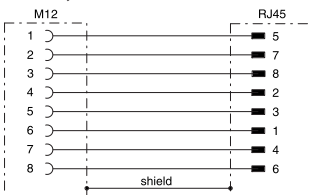


### Circuit diagram

#### 490105, 490106

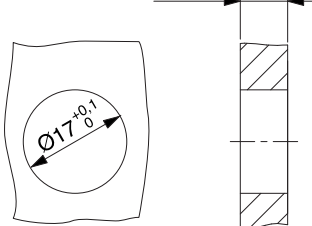


#### 490107, 490108



### Mounting diagram

max. 4,0



Description	Part-No.	Type	PU
4 pole 90°	490105	M12-R45 F/F 90° 4/4 Cat.5e PROFINET	1
4 pole 180°	490106	M12-R45 F/F 180° 4/4 Cat.5e PROFINET	1
8 pole 90°	490107	M12-R45 F/F 90° 8/8 Cat.5e	1
8 pole 180°	490108	M12-R45 F/F 180° 8/8 Cat.5e	1

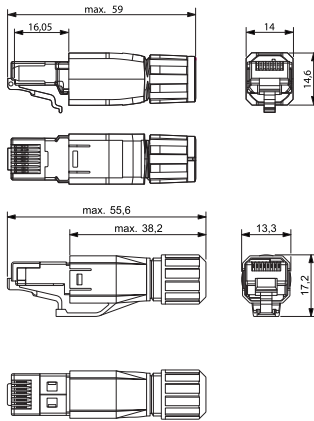
Technical data	490105	490106	490107	490108
Nominal voltage			24 V	
Nominal voltage range			50 V	
Rated current		max. 1 A per contact		
Number of terminations	4		8	
Cable length (m)			–	
Rate of transmission		100 Mbit/s		1 Gbit/s
Category	5e			6
Contact type			1 : 1	
Shielding			360° shielding	
Coding	D			A
<b>General</b>				
Form		RJ45 / M12 x 1		
Rated insulation voltage (EN 50178)			–	
Test voltage			–	
Pollution degree			3	
Insulation resistance			≥100 MΩ	
Contact resistance			≤30 mΩ	
Class of flammability according to UL 94			V0	
Protection class			IP 67 in screwed condition	
Housing material			PA	
Cover			–	
Contact material			Phosphor bronze, gold-plated	
Field installation			–	
Installation depth			approx. 70 mm	
Cable construction			–	
Cable jacket			–	
Cable diameter			–	
Bending radius			–	
Operation temperature range			-25 °C – 85 °C	
Storage temperature range			-25 °C – 85 °C	
Mechanical service life			≥ 750 insertion cycles	
Dimension			(?×D) 29.5 × 29 mm	
Weight (kg/piece)			0.037	
Approvals			–	
Standards		PROFINET		–

# Interface Technology · Ethernet connectivity

## Industrial connector RJ45 IDC quick-connect technology, no tools required Category 5e / 6<sub>A</sub>



### Dimensions



### Connection assignment RJ45

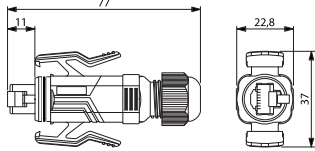
	TIA 568A	TIA 568 B	Profinet
1	WHGN	WHOG	YE
2	GN	OG	OG
3	WHOG	WHGN	WH
4	BU	BU	-
5	WHBU	WHBU	-
6	OG	GN	BU
7	WHBR	WHBR	-
8	BR	BR	-

Description	Part-No.	Type	PU	
<b>Suitable for fieldbus systems</b>				
Description	Profinet, SERCOS 3, Ethercat 4-pin	772101	RJ45-M 4pol. Cat.5e Profinet	1
	Ethernet/IP, Powerlink, VARAN 8-pin	772100	RJ45-M 8pol. Cat.5e	1
	Ethernet/IP, Powerlink, VARAN 8-pin	772102	RJ45-M 8pol. Cat.6A	1
<b>Technical data</b>				
	<b>772101</b>	<b>772100</b>	<b>772102</b>	
Nominal voltage	30 V		50 V	
Nominal voltage range	-			
Rated current	Max. 1.75 A per contact			
Number of terminations	4	8		
Cable length (m)	-			
Transmission frequency	100 MHz	250 MHz, 10 Gigabit/s		
Category	5e (TIA 5688:2001)		6 <sub>A</sub> EIA/TIA 568B.2-10	
Contact type	IDC			
Shielding	yes			
<b>General</b>				
Form	RJ45			
Rated insulation voltage (EN 50178)	-			
Test voltage	-			
Pollution degree	1	2		
Insulation resistance	≥100 MΩ			
Contact resistance	≤50 mΩ			
Class of flammability according to UL 94	V0	V2		
Protection class	IP 20			
Housing material	PA grey	PA black		
Cover	-			
Contact material	CuSn, gold-plated			
Field installation	-			
Installation depth	-			
Cable construction	-			
Cable jacket	-			
Cable diameter	4.5 – 8 mm			
Cross section	AWG 26-22		AWG 26-24	
Operation temperature range	-20 °C – 70 °C			
Storage temperature range	-20 °C – 70 °C			
Mechanical service life	≥ 1000 insertion cycles		≥ 750 insertion cycles	
Dimensions (w × h × d)	59.0 × 14.6 × 14.0 mm		56.0 × 13.3 × 17.2 mm	
Weight (kg/piece)	0.012			
Approvals	-			
Standards	Profinet	-		

## Industrial connector RJ45 Version V6; category 5e IDC quick-connect technology



### Dimensions



### Connection assignment RJ45

	TIA 568A	TIA 568 B	Profinet
1	WHGN	WHOG	YE
2	GN	OG	OG
3	WHOG	WHGN	WH
4	BU	BU	-
5	WHBU	WHBU	-
6	OG	GN	BU
7	WHBR	WHBR	-
8	BR	BR	-

Description	Part-No.	Type	PU	
<b>Suitable for Ethernet applications</b>				
Description	Cat.5e	772120	RJ45-M 8pol. Cat.5e V6	1
	Cat.6	772121	RJ45-M 8pol. Cat.6 V6	1

Technical data	772120	772121
Nominal voltage		30 V
Nominal voltage range		-
Rated current	Max. 1.75 A per contact	Max. 1.0 A per contact
Number of terminations		8
Cable length (m)		-
Transmission frequency	100 MHz	250 MHz
Category	5e (TIA 5688:2001)	6
Contact type		IDC
Shielding		yes

General		
Form	V6 to ISO/IEC 61076-3-106	
Rated insulation voltage (EN 50178)	-	
Test voltage	-	
Pollution degree	2	
Insulation resistance	≥100 MΩ	
Contact resistance	≤50 mΩ	
Class of flammability according to UL 94	V0	V2
Protection class	IP 67	
Housing material	PA black	
Gasket	NBR / FPM	
Contact material	CuSn, gold-plated	
Field installation	No tools required	Parallel crimp tool required
Installation depth	-	
Cable construction	-	
Cable jacket	-	
Cable diameter	5 – 8 mm	
Cross section	AWG 16-22	AWG 24-20
Operation temperature range	-20 °C – 70 °C	
Storage temperature range	-20 °C – 70 °C	
Mechanical service life	≥ 1000 insertion cycles	
Dimensions (w × h × d)	77.0 × 37.0 × 22.8 mm	
Weight (kg/piece)	0.033	
Approvals	-	
Standards	-	

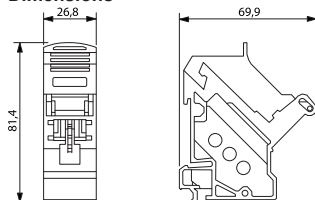
Accessories	Article number	Type	PU
Parallel crimp tool	772129	RJ45-LC	1
Cable gland	772122	PM-RJ45 8F/IDC Cat.5e V6	1
Cable gland	772123	PM-RJ45 8F/IDC Cat.6 V6	1
Cable gland	772124	PM-RJ45 8F/F Cat.5e V6	1

# Interface Technology · Ethernet connectivity

## Module holder, RJ45, female / IDC For TS35 DIN rail Category 6



### Dimensions



### Connection assignment RJ45

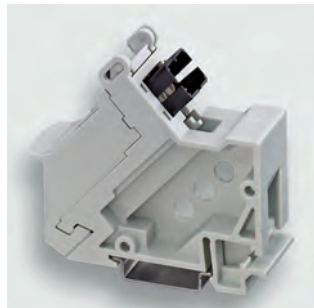
	TIA 568A	TIA 568 B	Profinet
1	WHGN	WHOG	YE
2	GN	OG	OG
3	WHOG	WHGN	WH
4	BU	BU	-
5	WHBU	WHBU	-
6	OG	GN	BU
7	WHBR	WHBR	-
8	BR	BR	-

Description	Part-No.	Type	PU	
<b>Suitable for Ethernet applications</b>				
Description	8-pin	772104	MDT-RJ45 F Cat.6	1
<b>Technical data</b>				
		<b>772104</b>		
Nominal voltage		30 V		
Nominal voltage range		-		
Rated current		Max. 1.0 A per contact		
Number of terminations		8		
Cable length (m)		-		
Transmission frequency		250 MHz		
Category		6		
Contact type		IDC		
Shielding		yes		
<b>General</b>				
Form		RJ45		
Rated insulation voltage (EN 50178)		-		
Test voltage		-		
Pollution degree		1		
Insulation resistance		≥100 MΩ		
Contact resistance		≤50 mΩ		
Class of flammability according to UL 94		V0		
Protection class		IP 20		
Housing material		PC-GF grey		
Contact material		CuSn, gold-plated		
Field installation		-		
Installation depth		-		
Cable construction		-		
Cable jacket		-		
Cable diameter		4.5 – 8 mm		
Cross section		AWG 24-22		
Operation temperature range		-10 °C – 60 °C		
Storage temperature range		-40 °C – 70 °C		
Mechanical service life		≥ 750 insertion cycles		
Dimensions (w × h × d)		36.0 × 36.0 × 27.5 mm		
Weight (kg/piece)		0.063		
Approvals		-		
Standards		-		
<b>Accessories</b>				
Patch cable RJ45 Cat.5e	192000.xxxx	xxxx cable length from 0.5 - 30 m	1	
Patch cable RJ45 Cat.6e	192100.xxxx	xxxx cable length from 0.5 - 30 m	1	

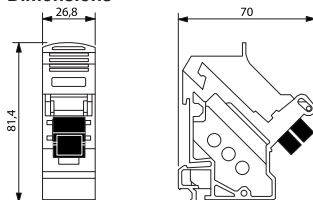
## Module holder FOC female/female

For TS35 DIN rail

SCRJ , duplex, GOF, POF



### Dimensions



Description	Part-No.	Type	PU
Description	772106	MDT-LWL-SCRJ	1
<b>Technical data</b>		<b>772106</b>	
Nominal voltage	AC 115 / 230 V		
Nominal voltage range	-		
Rated current	-		
Number of terminations	-		
Cable length (m)	-		
Transmission frequency	-		
Category	-		
Contact type	SCRJ to EN 50377-6-1		
Shielding	-		
<b>General</b>		<b>Module holder FOC female/female</b>	
Form	Module holder FOC female/female		
Rated insulation voltage (EN 50178)	-		
Test voltage	-		
Pollution degree	1		
Insulation resistance	-		
Contact resistance	-		
Class of flammability according to UL 94	V0		
Protection class	IP 20		
Housing material	PC-GF grey		
Gasket	-		
Contact material	-		
Field installation	-		
Installation depth	-		
Cable construction	-		
Cable jacket	-		
Cable diameter	4.5 – 8 mm		
Cross section	2.5 mm		
Operation temperature range	-10 °C – 60 °C		
Storage temperature range	-10 °C – 60 °C		
Mechanical service life	≥ 500 insertion cycles		
Dimensions (w × h × d)	26.8 × 70.0 × 81.4 mm		
Weight (kg/piece)	0.063		
Approvals	-		
Standards	-		

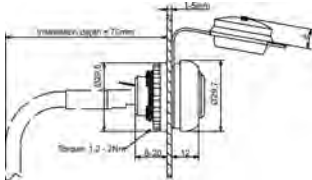
### Connection assignment

# Actuator sensor interface · RJ45 panel connector

RJ45 panel connector for front installation 22.5 mm  
female/female 1:1  
Category 5e/6

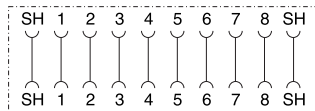


### Dimensions

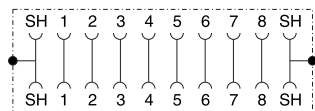


### Circuit diagram

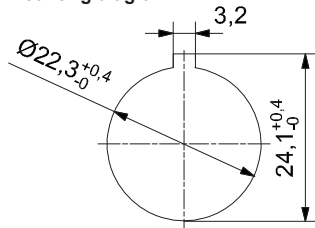
#### 492075



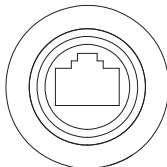
#### 491075



### Mounting diagram



front view:



Description	Part-No.	Type	PU
<b>Category</b>			
Cat.5e	492075	RJ45 F/F 8/8 Cat.5e	1
Cat.6	491075	RJ45 F/F 8/8 Cat.6	1

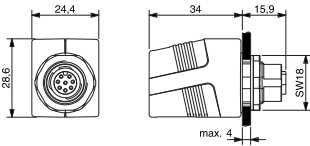
Technical data	492075	491075
Nominal voltage		AC 24 V
Nominal voltage range	AC 50 V	AC 150 V
Rated current		1.5 A
Number of terminations		8
Cable length (m)		–
Rate of transmission	100 MHz	250 MHz
Category	5e	6
Contact type		1 : 1
Shielding	shield connected through	360° shielding
Coding		–
<b>General</b>		
Form		RJ45
Rated insulation voltage (EN 50178)		–
Test voltage		–
Pollution degree		3
Insulation resistance		≥100 MΩ
Contact resistance		≤30 mΩ
Class of flammability according to UL 94		V0
Protection class	IP 65 and NEMA UL Type 12 in closed and IP 20 in inserted condition	
Housing material	PA-GF25; PBT Gf20; cover TPU	
Cover	TPU	
Contact material	CuSn, gold-plated	
Field installation	Front plate cutout D=22.5mm	
Installation depth	approx. 70 mm	
Cable construction	8 (4-pair)	
Cable jacket	–	
Cable diameter	–	
Bending radius	–	
Operation temperature range	-25 °C – 70 °C	
Storage temperature range	-25 °C – 80 °C	
Mechanical service life	<750 insertion cycles	
Dimension	(D) 29.5 × 29 mm	
Weight (kg/piece)	0.016	
Approvals	cULus	
Standards	–	

# Actuator sensor interface · RJ45 panel connector

## Control cabinet bushing M12 - RJ45 female/female 1:1 Category 5e

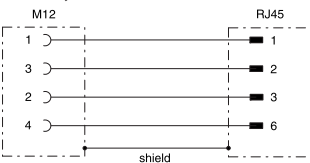


### Dimensions

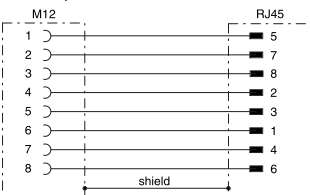


### Circuit diagram

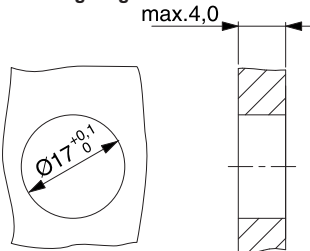
#### 490105, 490106



#### 490107, 490108



### Mounting diagram



Description	Part-No.	Type	PU
4 pole 90°	490105	M12-R45 F/F 90° 4/4 Cat.5e PROFINET	1
4 pole 180°	490106	M12-R45 F/F 180° 4/4 Cat.5e PROFINET	1
8 pole 90°	490107	M12-R45 F/F 90° 8/8 Cat.5e	1
8 pole 180°	490108	M12-R45 F/F 180° 8/8 Cat.5e	1

Technical data	490105	490106	490107	490108
Nominal voltage			24 V	
Nominal voltage range			50 V	
Rated current		max. 1 A per contact		
Number of terminations	4			8
Cable length (m)			–	
Rate of transmission		100 Mbit/s		1 Gbit/s
Category	5e			6
Contact type			1 : 1	
Shielding			360° shielding	
Coding	D			A
<b>General</b>				
Form		RJ45 / M12 x 1		
Rated insulation voltage (EN 50178)			–	
Test voltage			–	
Pollution degree			3	
Insulation resistance			≥100 MΩ	
Contact resistance			≤30 mΩ	
Class of flammability according to UL 94			V0	
Protection class			IP 67 in screwed condition	
Housing material			PA	
Cover			–	
Contact material			Phosphor bronze, gold-plated	
Field installation			–	
Installation depth			approx. 70 mm	
Cable construction			–	
Cable jacket			–	
Cable diameter			–	
Bending radius			–	
Operation temperature range			-25 °C – 85 °C	
Storage temperature range			-25 °C – 85 °C	
Mechanical service life			≥ 750 insertion cycles	
Dimension			(?×D) 29.5 × 29 mm	
Weight (kg/piece)			0.037	
Approvals			–	
Standards		PROFINET		–

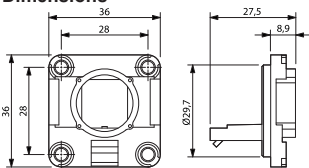


# Interface Technology · Ethernet connectivity

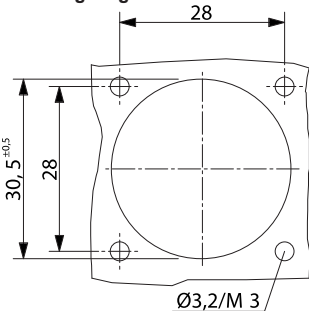
## Cable gland, RJ45, female / IDC Version V6 Category 5e / 6, IDC, no tools required



### Dimensions



### Mounting diagram



Description	Part-No.	Type	PU	
<b>Suitable for Ethernet applications</b>				
Description	Cat.5e	772122	PM-RJ45 8F/IDC Cat.5e V6	1
	Cat.6	772123	PM-RJ45 8F/IDC Cat.6 V6	1

Technical data	772122	772123
Nominal voltage		30 V
Nominal voltage range		–
Rated current		Max. 1.0 A per contact
Number of terminations		8
Cable length (m)		–
Transmission frequency	100 MHz	250 MHz
Category	5e (TIA 568B:2001)	6
Contact type		IDC
Shielding		yes
<b>General</b>		
Form		V6 to ISO/IEC 61076-3-106
Rated insulation voltage (EN 50178)		–
Test voltage		–
Pollution degree		1
Insulation resistance		≥100 MΩ
Contact resistance		≤50 mΩ
Class of flammability according to UL 94		V0
Protection class		IP 67
Housing material		PA black
Gasket		NBR
Contact material		CuSn, gold-plated
Field installation		–
Installation depth		–
Cable construction		–
Cable jacket		–
Cable diameter		Max. 9.5 mm
Cross section		AWG 24-22
Operation temperature range		-20 °C – 70 °C
Storage temperature range		-20 °C – 70 °C
Mechanical service life		≥ 750 insertion cycles
Dimensions (w × h × d)		36.0 × 36.0 × 27.5 mm
Weight (kg/piece)		0.027
Approvals		–
Standards		–

Accessories	Article number	Type	PU
Industrial connector RJ45	772120	RJ45-M 8-pin Cat.5e V6	1
Industrial connector RJ45	772121	RJ45-M 8-pin Cat.6 V6	1

### Connection assignment

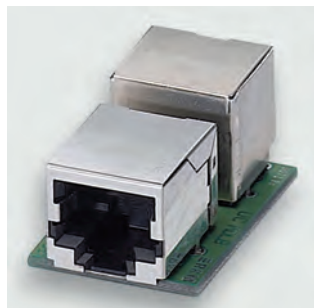
#### RJ45

	TIA 568A	TIA 568 B	Profinet
1	WHGN	WHOG	YE
2	GN	OG	OG
3	WHOG	WHGN	WH
4	BU	BU	-
5	WHBU	WHBU	-
6	OG	GN	BU
7	WHBR	WHBR	-
8	BR	BR	-

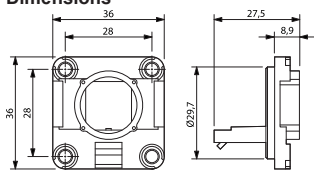
## Cable gland RJ45 female / female

Version V6

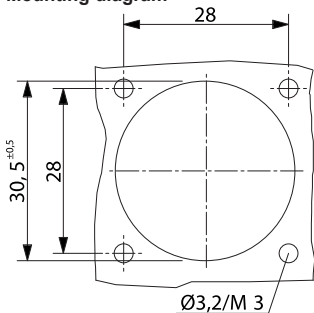
Category 5e



### Dimensions



### Mounting diagram



Description	Part-No.	Type	PU
<b>Suitable for Ethernet applications</b>			
Description	Cat.5e	772124	PM-RJ45 8F/F Cat.5e V6
			1
<b>Technical data</b>		<b>772124</b>	
Nominal voltage		30 V	
Nominal voltage range		-	
Rated current		Max. 1.0 A per contact	
Number of terminations		8	
Cable length (m)		-	
Transmission frequency		100 MHz	
Category		5e (TIA 568B:2001)	
Contact type		-	
Shielding		yes	
<b>General</b>			
Form		V6 to ISO/IEC 61076-3-106	
Rated insulation voltage (EN 50178)		-	
Test voltage		-	
Pollution degree		1	
Insulation resistance		≥100 MΩ	
Contact resistance		≤50 mΩ	
Class of flammability according to UL 94		V0	
Protection class		IP 67	
Housing material		PA black	
Gasket		NBR	
Contact material		CuSn, gold-plated	
Field installation		-	
Installation depth		-	
Cable construction		-	
Cable jacket		-	
Cable diameter		Max. 9.5 mm	
Cross section		-	
Operation temperature range		-20 °C – 70 °C	
Storage temperature range		-20 °C – 70 °C	
Mechanical service life		≥ 750 insertion cycles	
Dimensions (w × h × d)		36.0 × 36.0 × 27.5 mm	
Weight (kg/piece)		0.027	
Approvals		-	
Standards		-	

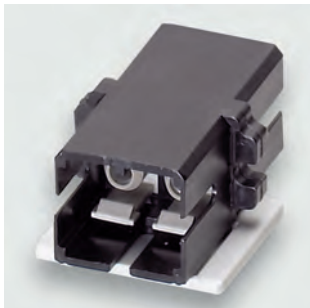
### Connection assignment

#### RJ45

	TIA 568A	TIA 568 B	Profinet
1	WHGN	WHOG	YE
2	GN	OG	OG
3	WHOG	WHGN	WH
4	BU	BU	-
5	WHBU	WHBU	-
6	OG	GN	BU
7	WHBR	WHBR	-
8	BR	BR	-

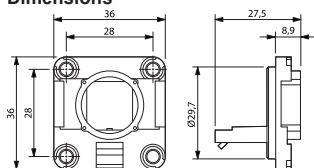
# Interface Technology · Ethernet connectivity

## Cable gland FOC female / female Version V6 SCRJ, duplex, GOF, POF

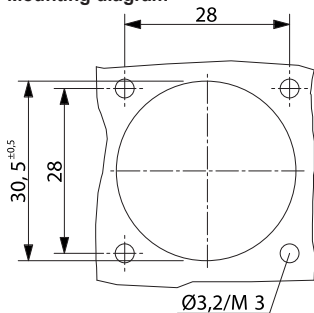


Description	Part-No.	Type	PU
Description	772127	PM-LWL F/F SCRJ V6	1
<b>Technical data</b>		<b>772127</b>	
Nominal voltage	AC 115 / 230 V		
Nominal voltage range	-		
Rated current	-		
Number of terminations	-		
Cable length (m)	-		
Transmission frequency	-		
Category	-		
Contact type	SCRJ to EN 50377-6-1		
Shielding	-		
<b>General</b>			
Form	V6 to ISO/IEC 61076-3-106		
Rated insulation voltage (EN 50178)	-		
Test voltage	-		
Pollution degree	-		
Insulation resistance	-		
Contact resistance	-		
Class of flammability according to UL 94	V0		
Protection class	IP 67		
Housing material	PA black		
Gasket	NBR		
Contact material	-		
Field installation	-		
Installation depth	-		
Cable construction	-		
Cable jacket	-		
Cable diameter	-		
Cross section	-		
Operation temperature range	-20 °C – 70 °C		
Storage temperature range	-20 °C – 70 °C		
Mechanical service life	≥ 500 insertion cycles		
Dimensions (w × h × d)	36.0 × 36.0 × 27.5 mm		
Weight (kg/piece)	0.027		
Approvals	-		
Standards	-		

### Dimensions



### Mounting diagram

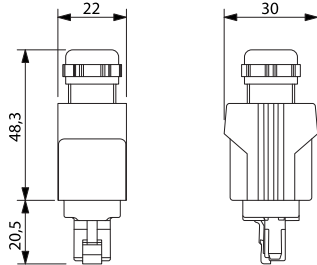


### Connection assignment

## Industrial connector RJ45 Version V14, push-pull Category 5e



### Dimensions



### Connection assignment RJ45

	TIA 568A	TIA 568 B	Profinet
1	WHGN	WHOG	YE
2	GN	OG	OG
3	WHOG	WHGN	WH
4	BU	BU	-
5	WHBU	WHBU	-
6	OG	GN	BU
7	WHBR	WHBR	-
8	BR	BR	-

Description	Part-No.	Type	PU	
<b>Suitable for fieldbus systems</b>				
Description	Profinet, Sercos 3, Ethercat 4-pin	772131	RJ45-M 4pol. Cat.5e V14 Profinet	1
	Ethernet applications, 8-pin	772130	RJ45-M 8pol. Cat.5e V14	1
	Ethernet applications, 8-pin	772132	RJ45-M 8pol. Cat.6 V14	1

Technical data	772131	772130	772132
Nominal voltage		30 V	
Nominal voltage range		-	
Rated current		Max. 1.75 A per contact	
Number of terminations	4	8	
Cable length (m)		-	
Transmission frequency		100 MHz	250 MHz
Category	5e (TIA 568B:2001)		6
Contact type		IDC	
Shielding		yes	

<b>General</b>			
Form	V14 to IEC 61918; IEC 61784-5-3		
Rated insulation voltage (EN 50178)	-		
Test voltage	-		
Pollution degree	2		
Insulation resistance	≥100 MΩ		
Contact resistance	≤50 mΩ		
Class of flammability according to UL 94	V0		
Protection class	IP 67		
Housing material	PA black		
Gasket	NBR / FPM		
Contact material	CuSn, gold-plated		
Field installation	No tools required	Parallel crimp tool required	
Installation depth	-		
Cable construction	-		
Cable jacket	-		
Cable diameter	5 – 8 mm		
Cross section	AWG 16-22		
Operation temperature range	-40 °C – 70 °C		
Storage temperature range	-40 °C – 70 °C		
Mechanical service life	≥ 250 insertion cycles		
Dimensions (w × h × d)	30.0 × 22.0 × 48.3 mm		
Weight (kg/piece)	0.033		
Approvals	-		
Standards	-		

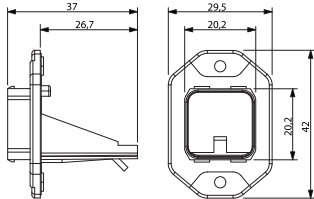
Accessories	Article number	Type	PU
Parallel crimp tool	772129	RJ45-LC	1
Cable gland	772134	PM-RJ45 4F/IDC Cat.5e V14 Profinet	1
Cable gland	772133	PM-RJ45 8F/IDC Cat.5e V14	1
Cable gland	772135	PM-RJ45 8F/IDC Cat.6 V14	1

# Interface Technology · Ethernet connectivity

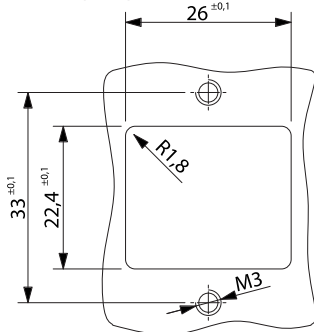
## Cable gland, RJ45, female / IDC Version V14, push-pull Category 5e



### Dimensions



### Mounting diagram



Description	Part-No.	Type	PU	
<b>Suitable for fieldbus systems</b>				
Description	Profinet, SERCOS 3, Ethercat 4-pin	772134	PM-RJ45 4F/IDC Cat.5e V14 Profinet	1
	Ethernet applications, 8-pin	772133	PM-RJ45 8F/IDC Cat.5e V14	1
	Ethernet applications, 8-pin	772135	PM-RJ45 8F/IDC Cat.6 V14	1

Technical data	772134	772133	772135
Nominal voltage		30 V	
Nominal voltage range		–	
Rated current		Max. 1.0 A per contact	
Number of terminations	4		8
Cable length (m)		–	
Transmission frequency		100 MHz	250 MHz
Category		5e (TIA 568B:2001)	6
Contact type		IDC	
Shielding		yes	
<b>General</b>			
Form		V14 to IEC 61918, IEC 61784-5-3	
Rated insulation voltage (EN 50178)		–	
Test voltage		–	
Pollution degree		2	
Insulation resistance		≥100 MΩ	
Contact resistance		≤50 mΩ	
Class of flammability according to UL 94		V0	
Protection class		IP 67	
Housing material		PA-GF black	
Gasket		NBR	
Contact material		CuSn, gold-plated	
Field installation		–	
Installation depth		–	
Cable construction		–	
Cable jacket		–	
Cable diameter		Max. 9.5 mm	
Cross section		AWG 24-22	
Operation temperature range		-20 °C – 70 °C	
Storage temperature range		-20 °C – 70 °C	
Mechanical service life		≥ 750 insertion cycles	
Dimensions (w × h × d)		29.5 × 42.0 × 37.0 mm	
Weight (kg/piece)		0.050	
Approvals		–	
Standards	Profinet		–

Accessories	Article number	Type	PU
Industrial connector RJ45	772131	RJ45-M 4-pin Cat.5e V14 Profinet	1
Industrial connector RJ45	772130	RJ45-M 8-pin Cat.5e V14	1
Industrial connector RJ45	772132	RJ45-M 8-pin Cat.6 V14	1

### Connection assignment

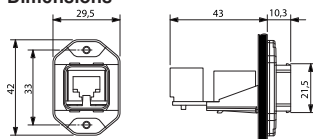
#### RJ45

	TIA 568A	TIA 568 B	Profinet
1	WHGN	WHOG	YE
2	GN	OG	OG
3	WHOG	WHGN	WH
4	BU	BU	-
5	WHBU	WHBU	-
6	OG	GN	BU
7	WHBR	WHBR	-
8	BR	BR	-

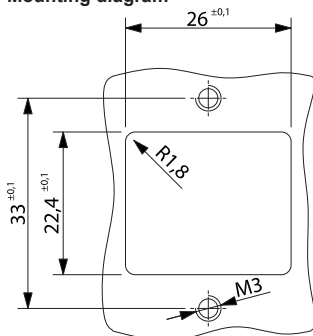
## Cable gland FOC female / female Version V14, push-pull SCRJ, duplex, POF



### Dimensions



### Mounting diagram



Description	Part-No.	Type	PU
Description	772137	PM-RJ45 LWL SCRJ V14	1
<b>Technical data</b>		<b>772137</b>	
Nominal voltage	AC 115 / 230 V		
Nominal voltage range	-		
Rated current	-		
Number of terminations	-		
Cable length (m)	-		
Transmission frequency	-		
Category	-		
Contact type	SCRJ to EN 50377-6-1		
Shielding	-		
<b>General</b>			
Form	V14 to IEC 61918; IEC 61784-5-3		
Rated insulation voltage (EN 50178)	-		
Test voltage	-		
Pollution degree	2		
Insulation resistance	-		
Contact resistance	-		
Class of flammability according to UL 94	V0		
Protection class	IP 67		
Housing material	PA-GF black		
Gasket	NBR		
Contact material	-		
Field installation	-		
Installation depth	-		
Cable construction	-		
Cable jacket	-		
Cable diameter	-		
Cross section	-		
Operation temperature range	-20 °C – 70 °C		
Storage temperature range	-20 °C – 70 °C		
Mechanical service life	≥ 500 insertion cycles		
Dimensions (w × h × d)	29.5 × 42.0 × 43.0 mm		
Weight (kg/piece)	0.182		
Approvals	-		
Standards	-		
<b>Accessories</b>		<b>Article number</b>	<b>Type</b>
Patch cable	772136.xxxx	FOC POF SCRJ V14 IP67	1
		0.5 - 100 m	