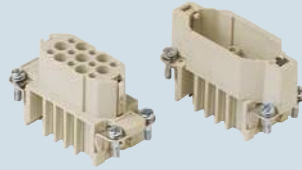


enclosures:  
size "49.16" page:

C-TYPE IP65/IP66 ..... 208 - 210  
aggressive environments ..... 326  
EMC ..... 346

panel supports: page:  
COB + adaptor ..... 410 - 412

inserts, crimp connections



10A crimp contacts  
silver and gold plated



description

part No.

part No.

part No.

without contacts (to be ordered separately)  
female inserts for female contacts  
male inserts for male contacts

**CDF 15**  
**CDM 15**

10A female contacts

0.14-0.37 mm <sup>2</sup>	AWG 26-22	identification No. 1
0.5 mm <sup>2</sup>	AWG 20	identification No. 2
0.75 mm <sup>2</sup>	AWG 18	identification No. ②
1 mm <sup>2</sup>	AWG 18	identification No. 3
1.5 mm <sup>2</sup>	AWG 16	identification No. 4
2.5 mm <sup>2</sup>	AWG 14	identification No. 5

<b>CDFA 0.3</b>	<b>silver plated</b>	<b>CDDF 0.3</b>	<b>gold plated</b>
<b>CDFA 0.5</b>		<b>CDDF 0.5</b>	
<b>CDFA 0.7</b>		<b>CDDF 0.7</b>	
<b>CDFA 1.0</b>		<b>CDDF 1.0</b>	
<b>CDFA 1.5</b>		<b>CDDF 1.5</b>	
<b>CDFA 2.5</b>		<b>CDDF 2.5</b>	

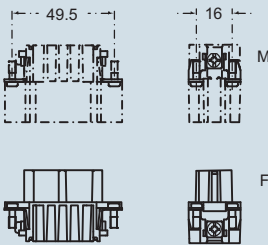
10A male contacts

0.14-0.37 mm <sup>2</sup>	AWG 26-22	identification No. 1
0.5 mm <sup>2</sup>	AWG 20	identification No. 2
0.75 mm <sup>2</sup>	AWG 18	identification No. ②
1 mm <sup>2</sup>	AWG 18	identification No. 3
1.5 mm <sup>2</sup>	AWG 16	identification No. 4
2.5 mm <sup>2</sup>	AWG 14	identification No. 5

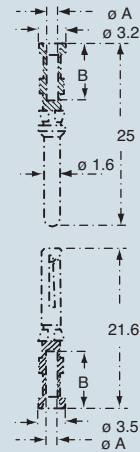
<b>CDMA 0.3</b>	<b>silver plated</b>	<b>CDMD 0.3</b>	<b>gold plated</b>
<b>CDMA 0.5</b>		<b>CDMD 0.5</b>	
<b>CDMA 0.7</b>		<b>CDMD 0.7</b>	
<b>CDMA 1.0</b>		<b>CDMD 1.0</b>	
<b>CDMA 1.5</b>		<b>CDMD 1.5</b>	
<b>CDMA 2.5</b>		<b>CDMD 2.5</b>	

- characteristics according to EN 61984:  
**10A 250V 4kV 3**  
**10A 230/400V 4kV 2**
- compliant with DIN EC 175-301-801 standard
- UL, CSA, CCC, GL, GOST certified
- rated voltage according to UL/CSA: 600V
- insulation resistance: ≥ 10 GΩ
- ambient temperature limit: -40 °C ... +125 °C
- are made of self-extinguishing thermoplastic resin UL 94 V0
- mechanical life: ≥ 500 cycles
- contact resistance: ≤ 3 mΩ
- for applications requiring higher voltages, please see the special voltage application section on page 44
- for contact crimping instructions, please see the crimping tool section (10A contacts, CDF and CDM series) on pages 466, 470, 480, 482, 484, 486
- for maximum current load, see the following load curves inserts, for more information see page 493

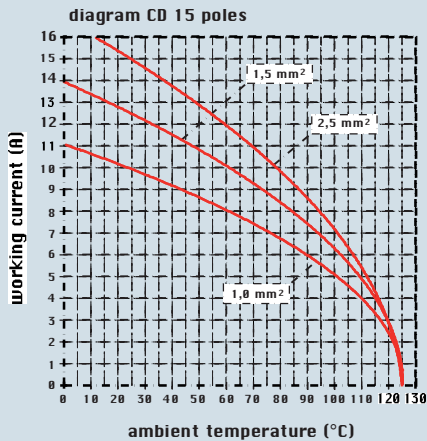
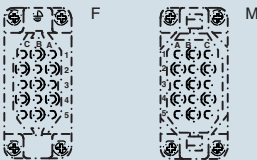
dimensions in mm



dimensions in mm



contacts side (front view)



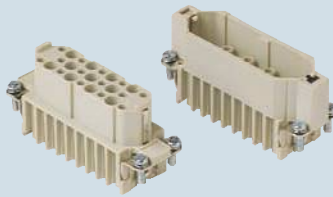
dimensions shown are not binding  
and may be changed without notice

CDF and CDM contacts

conductor section	conductor slot	conductors stripping length
mm <sup>2</sup>	ø A (mm)	B (mm)
0.14-0.37	0.9	8
0.5	1.1	8
0.75	1.3	8
1.0	1.45	8
1.5	1.8	8
2.5	2.2	6

enclosures:  
 size "66.16" page:  
**C-TYPE IP65/IP66** ..... 211 - 212  
**aggressive environments** ..... 327  
**EMC** ..... 347  
 panel supports: page:  
**COB + adaptor** ..... 410 - 412

**inserts, crimp connections**



**10A crimp contacts silver and gold plated**



description	part No.	part No.	part No.
-------------	----------	----------	----------

without contacts (to be ordered separately)  
 female inserts for female contacts  
 male inserts for male contacts

**CDF 25**  
**CDM 25**

10A female contacts

0.14-0.37 mm <sup>2</sup>	AWG 26-22	identification No. 1
0.5 mm <sup>2</sup>	AWG 20	identification No. 2
0.75 mm <sup>2</sup>	AWG 18	identification No. ②
1 mm <sup>2</sup>	AWG 18	identification No. 3
1.5 mm <sup>2</sup>	AWG 16	identification No. 4
2.5 mm <sup>2</sup>	AWG 14	identification No. 5

**silver plated**

<b>CDFA 0.3</b>
<b>CDFA 0.5</b>
<b>CDFA 0.7</b>
<b>CDFA 1.0</b>
<b>CDFA 1.5</b>
<b>CDFA 2.5</b>

**gold plated**

<b>CDFD 0.3</b>
<b>CDFD 0.5</b>
<b>CDFD 0.7</b>
<b>CDFD 1.0</b>
<b>CDFD 1.5</b>
<b>CDFD 2.5</b>

10A male contacts

0.14-0.37 mm <sup>2</sup>	AWG 26-22	identification No. 1
0.5 mm <sup>2</sup>	AWG 20	identification No. 2
0.75 mm <sup>2</sup>	AWG 18	identification No. ②
1 mm <sup>2</sup>	AWG 18	identification No. 3
1.5 mm <sup>2</sup>	AWG 16	identification No. 4
2.5 mm <sup>2</sup>	AWG 14	identification No. 5

**silver plated**

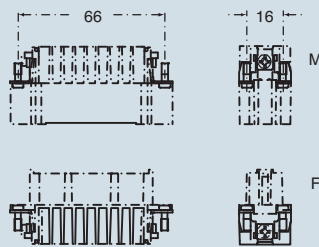
<b>CDMA 0.3</b>
<b>CDMA 0.5</b>
<b>CDMA 0.7</b>
<b>CDMA 1.0</b>
<b>CDMA 1.5</b>
<b>CDMA 2.5</b>

**gold plated**

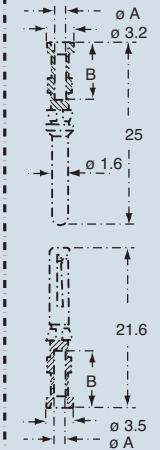
<b>CDMD 0.3</b>
<b>CDMD 0.5</b>
<b>CDMD 0.7</b>
<b>CDMD 1.0</b>
<b>CDMD 1.5</b>
<b>CDMD 2.5</b>

- characteristics according to EN 61984:  
**10A 250V 4kV 3**  
**10A 230/400V 4kV 2**
- compliant with DIN EC 175-301-801 standard
- UL, CSA, CCC, GL, GOST certified
- rated voltage according to UL/CSA: 600V
- insulation resistance: ≥ 10 GΩ
- ambient temperature limit: -40 °C ... +125 °C
- are made of self-extinguishing thermoplastic resin UL 94 V0
- mechanical life: ≥ 500 cycles
- contact resistance: ≤ 3 mΩ
- for applications requiring higher voltages, please see the special voltage application section on page 44
- for contact crimping instructions, please see the crimping tool section (10A contacts, CDF and CDM series) on pages 466, 470, 480, 482, 484, 486
- for maximum current load, see the following load curves inserts, for more information see page 493

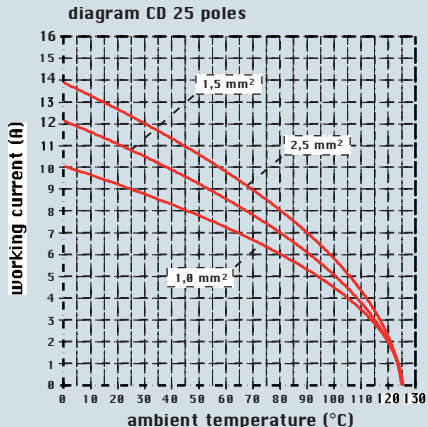
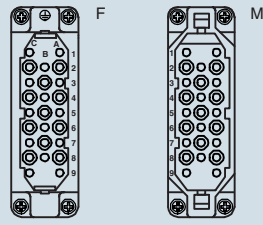
**dimensions in mm**



**dimensions in mm**



**contacts side (front view)**



**CDF and CDM contacts**

conductor section	conductor slot	conductors stripping length
mm <sup>2</sup>	ø A (mm)	B (mm)
0.14-0.37	0.9	8
0.5	1.1	8
0.75	1.3	8
1.0	1.45	8
1.5	1.8	8
2.5	2.2	6

dimensions shown are not binding and may be changed without notice

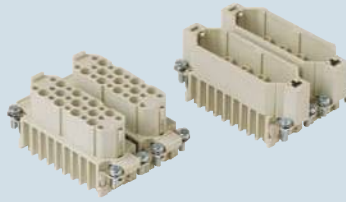
CD

enclosures:  
size "66.40"

page:

**C-TYPE IP65/IP66** ..... 215 - 217  
**aggressive environments** ..... 328

**inserts, crimp connections**



**10A crimp contacts silver and gold plated**



\* coding compliant with EUROMAP recommendations

description

without contacts (to be ordered separately)  
female inserts, No. (A1÷C9) and (ZA1÷ZC9) \*  
male inserts, No. (A1÷C9) and (ZA1÷ZC9) \*

part No.                      part No.

**CDF 25**                      **CDF 25 Z \***  
**CDM 25**                      **CDM 25 Z \***

part No.                      part No.

10A female contacts

0.14-0.37 mm <sup>2</sup>	AWG 26-22	identification No. 1
0.5 mm <sup>2</sup>	AWG 20	identification No. 2
0.75 mm <sup>2</sup>	AWG 18	identification No. ②
1 mm <sup>2</sup>	AWG 18	identification No. 3
1.5 mm <sup>2</sup>	AWG 16	identification No. 4
2.5 mm <sup>2</sup>	AWG 14	identification No. 5

10A male contacts

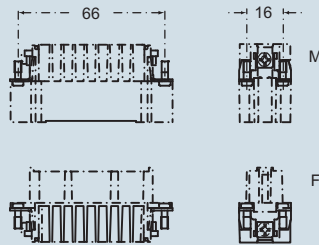
0.14-0.37 mm <sup>2</sup>	AWG 26-22	identification No. 1
0.5 mm <sup>2</sup>	AWG 20	identification No. 2
0.75 mm <sup>2</sup>	AWG 18	identification No. ②
1 mm <sup>2</sup>	AWG 18	identification No. 3
1.5 mm <sup>2</sup>	AWG 16	identification No. 4
2.5 mm <sup>2</sup>	AWG 14	identification No. 5

<b>CDFA 0.3</b>	<b>silver plated</b>	<b>CDFD 0.3</b>	<b>gold plated</b>
<b>CDFA 0.5</b>		<b>CDFD 0.5</b>	
<b>CDFA 0.7</b>		<b>CDFD 0.7</b>	
<b>CDFA 1.0</b>		<b>CDFD 1.0</b>	
<b>CDFA 1.5</b>		<b>CDFD 1.5</b>	
<b>CDFA 2.5</b>		<b>CDFD 2.5</b>	

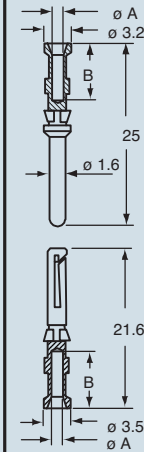
<b>CDMA 0.3</b>	<b>silver plated</b>	<b>CDMD 0.3</b>	<b>gold plated</b>
<b>CDMA 0.5</b>		<b>CDMD 0.5</b>	
<b>CDMA 0.7</b>		<b>CDMD 0.7</b>	
<b>CDMA 1.0</b>		<b>CDMD 1.0</b>	
<b>CDMA 1.5</b>		<b>CDMD 1.5</b>	
<b>CDMA 2.5</b>		<b>CDMD 2.5</b>	

- characteristics according to EN 61984:
- 10A 250V 4kV 3**
- 10A 230/400V 4kV 2**
- compliant with DIN EC 175-301-801 standard
- UL, CSA, CCC, GL, GOST certified
- rated voltage according to UL/CSA: 600V
- insulation resistance: ≥ 10 GΩ
- ambient temperature limit: -40 °C ... +125 °C
- are made of self-extinguishing thermoplastic resin UL 94 V0
- mechanical life: ≥ 500 cycles
- contact resistance: ≤ 3 mΩ
- for applications requiring higher voltages, please see the special voltage application section on page 44
- for contact crimping instructions, please see the crimping tool section (10A contacts, CDF and CDM series) on pages 466, 470, 480, 482, 484, 486
- for maximum current load, see the following load curves inserts, for more information see page 493

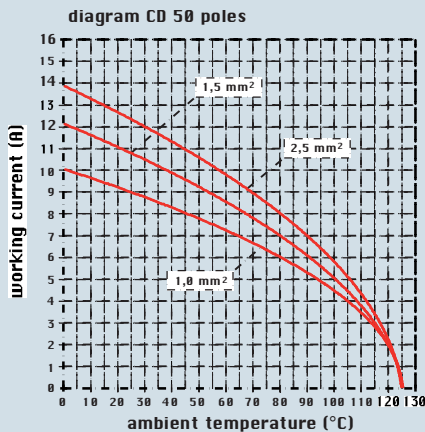
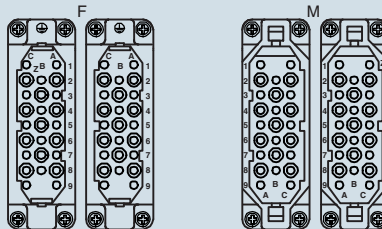
dimensions in mm



dimensions in mm



contacts side (front view)



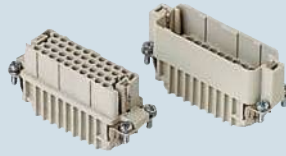
**CDF and CDM contacts**

conductor section	conductor slot	conductors stripping length
mm <sup>2</sup>	∅ A (mm)	B (mm)
0.14-0.37	0.9	8
0.5	1.1	8
0.75	1.3	8
1.0	1.45	8
1.5	1.8	8
2.5	2.2	6

dimensions shown are not binding and may be changed without notice

enclosures:  
 size "66.16" page:  
**C-TYPE IP65/IP66** ..... 211 - 213  
**aggressive environments** ..... 327  
**EMC** ..... 347  
 panel supports: page:  
**COB + adaptor** ..... 410 - 412

**inserts, crimp connections**



**10A crimp contacts silver and gold plated**



description	part No.	part No.	part No.
-------------	----------	----------	----------

without contacts (to be ordered separately)  
 female inserts for female contacts  
 male inserts for male contacts

**CDDF 38**  
**CDDM 38**

10A female contacts

0.14-0.37 mm <sup>2</sup>	AWG 26-22	identification No. 1
0.5 mm <sup>2</sup>	AWG 20	identification No. 2
0.75 mm <sup>2</sup>	AWG 18	identification No. ②
1 mm <sup>2</sup>	AWG 18	identification No. 3
1.5 mm <sup>2</sup>	AWG 16	identification No. 4
2.5 mm <sup>2</sup>	AWG 14	identification No. 5

silver plated

CDFA 0.3
CDFA 0.5
CDFA 0.7
CDFA 1.0
CDFA 1.5
CDFA 2.5

gold plated

CDFD 0.3
CDFD 0.5
CDFD 0.7
CDFD 1.0
CDFD 1.5
CDFD 2.5

10A male contacts

0.14-0.37 mm <sup>2</sup>	AWG 26-22	identification No. 1
0.5 mm <sup>2</sup>	AWG 20	identification No. 2
0.75 mm <sup>2</sup>	AWG 18	identification No. ②
1 mm <sup>2</sup>	AWG 18	identification No. 3
1.5 mm <sup>2</sup>	AWG 16	identification No. 4
2.5 mm <sup>2</sup>	AWG 14	identification No. 5

silver plated

CDMA 0.3
CDMA 0.5
CDMA 0.7
CDMA 1.0
CDMA 1.5
CDMA 2.5

gold plated

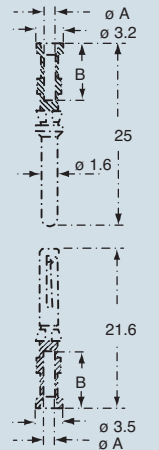
CDMD 0.3
CDMD 0.5
CDMD 0.7
CDMD 1.0
CDMD 1.5
CDMD 2.5

- characteristics according to EN 61984:
- 10A 250V 4kV 2**
- UL, CSA, CCC, GL, GOST certified
- rated voltage according to UL/CSA: 600V
- insulation resistance: ≥ 10 GΩ
- ambient temperature limit: -40 °C ... +125 °C
- are made of self-extinguishing thermoplastic resin UL 94 V0
- mechanical life: ≥ 500 cycles
- contact resistance: ≤ 3 mΩ
- for contact crimping instructions, please see the crimping tool section (10A contacts, CDF and CDM series) on pages 466, 470, 480, 482, 484, 486
- for maximum current load, see the following load curves inserts, for more information see page 494

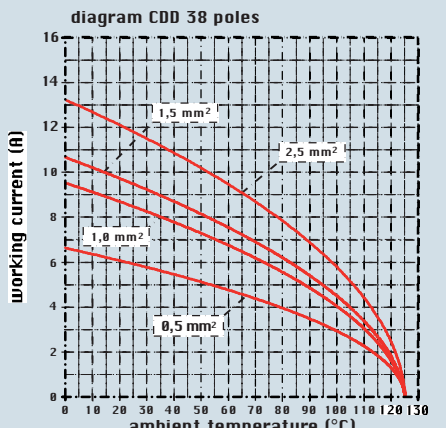
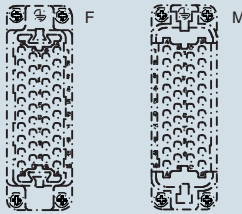
dimensions in mm



dimensions in mm



contacts side (front view)



**CDF and CDM contacts**

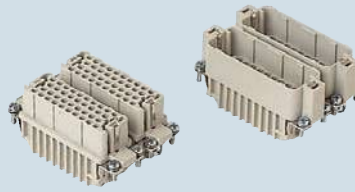
conductor section	conductor slot	conductors stripping length
mm <sup>2</sup>	ø A (mm)	B (mm)
0.14-0.37	0.9	8
0.5	1.1	8
0.75	1.3	8
1.0	1.45	8
1.5	1.8	8
2.5	2.2	6

dimensions shown are not binding and may be changed without notice

enclosures:  
 size "66.40" page:  
**C-TYPE IP65/IP66** ..... 215 - 217  
**aggressive environments** ..... 328

**inserts, crimp connections**

**10A crimp contacts silver and gold plated**



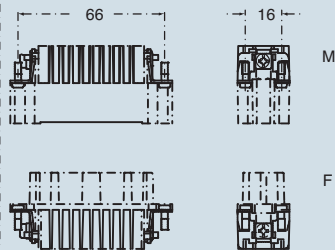
description	part No.	part No.	part No.	part No.
without contacts (to be ordered separately)				
female inserts	<b>CDDF 38</b>	<b>CDDF 38</b>		
male inserts	<b>CDDM 38</b>	<b>CDDM 38</b>		
<b>10A female contacts</b>				
0.14-0.37 mm <sup>2</sup> AWG 26-22 identification No. 1			<b>CDFA 0.3</b>	<b>CDFD 0.3</b>
0.5 mm <sup>2</sup> AWG 20 identification No. 2			<b>CDFA 0.5</b>	<b>CDFD 0.5</b>
0.75 mm <sup>2</sup> AWG 18 identification No. ②			<b>CDFA 0.7</b>	<b>CDFD 0.7</b>
1 mm <sup>2</sup> AWG 18 identification No. 3			<b>CDFA 1.0</b>	<b>CDFD 1.0</b>
1.5 mm <sup>2</sup> AWG 16 identification No. 4			<b>CDFA 1.5</b>	<b>CDFD 1.5</b>
2.5 mm <sup>2</sup> AWG 14 identification No. 5			<b>CDFA 2.5</b>	<b>CDFD 2.5</b>
<b>10A male contacts</b>				
0.14-0.37 mm <sup>2</sup> AWG 26-22 identification No. 1			<b>CDMA 0.3</b>	<b>CDMD 0.3</b>
0.5 mm <sup>2</sup> AWG 20 identification No. 2			<b>CDMA 0.5</b>	<b>CDMD 0.5</b>
0.75 mm <sup>2</sup> AWG 18 identification No. ②			<b>CDMA 0.7</b>	<b>CDMD 0.7</b>
1 mm <sup>2</sup> AWG 18 identification No. 3			<b>CDMA 1.0</b>	<b>CDMD 1.0</b>
1.5 mm <sup>2</sup> AWG 16 identification No. 4			<b>CDMA 1.5</b>	<b>CDMD 1.5</b>
2.5 mm <sup>2</sup> AWG 14 identification No. 5			<b>CDMA 2.5</b>	<b>CDMD 2.5</b>

silver plated

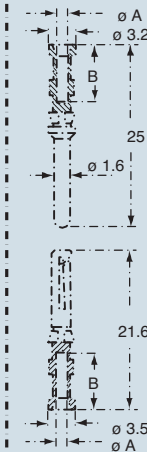
gold plated

- characteristics according to EN 61984:
- 10A 250V 4kV 2**
- UL, CSA, CCC, GL, GOST certified
- rated voltage according to UL/CSA: 600V
- insulation resistance: ≥ 10 GΩ
- ambient temperature limit: -40 °C ... +125 °C
- are made of self-extinguishing thermoplastic resin UL 94 V0
- mechanical life: ≥ 500 cycles
- contact resistance: ≤ 3 mΩ
- for contact crimping instructions, please see the crimping tool section (10A contacts, CDF and CDM series) on pages 466, 470, 480, 482, 484, 486
- for maximum current load, see the following load curves inserts, for more information see page 494

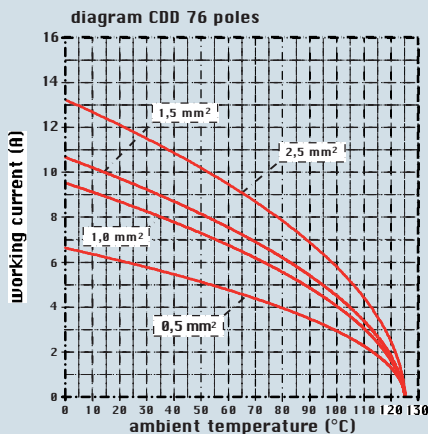
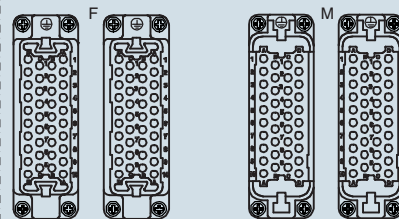
dimensions in mm



dimensions in mm



contacts side (front view)



**CDF and CDM contacts**

conductor section	conductor slot	conductors stripping length
mm <sup>2</sup>	ø A (mm)	B (mm)
0.14-0.37	0.9	8
0.5	1.1	8
0.75	1.3	8
1.0	1.45	8
1.5	1.8	8
2.5	2.2	6

dimensions shown are not binding and may be changed without notice

enclosures:  
size "49.16" page:

C-TYPE IP65/IP66 ..... 208 - 210  
aggressive environments ..... 326  
EMC ..... 346

panel supports: page:  
COB + adaptor ..... 410 - 412

inserts,  
screw terminal connection



inserts,  
screw terminal connection



description

part No.

part No.

indirect, with plate <sup>1)</sup>  
female inserts with female contacts  
male inserts with male contacts

CDAF 10  
CDAM 10

direct, without plate <sup>2)</sup>  
female inserts with female contacts  
male inserts with male contacts

CDAF 10 X  
CDAM 10 X

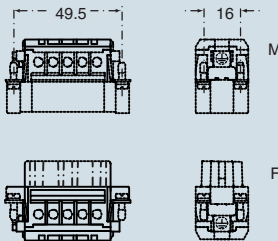
<sup>1)</sup> for non-prepared conductors



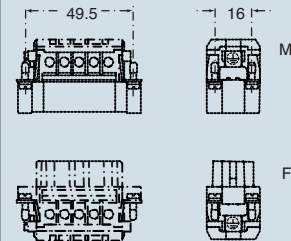
<sup>2)</sup> for conductors with bush terminal



dimensions in mm



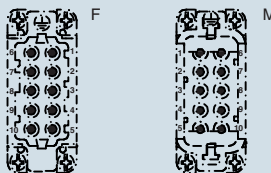
dimensions in mm



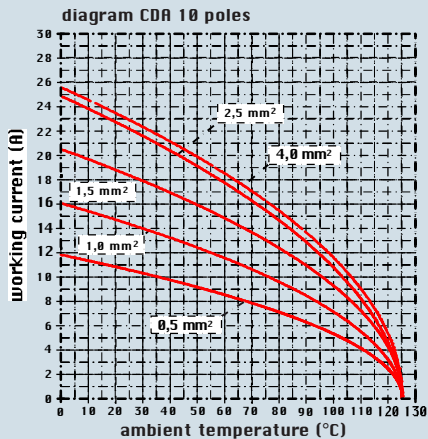
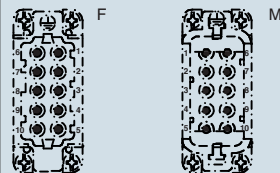
- characteristics according to EN 61984:

- 16A 250V 4kV 3**
- 16A 230/400V 4kV 2**
- UL, CSA, CCC, GL, GOST certified
- rated voltage according to UL/CSA: 600V
- insulation resistance:  $\geq 10 \text{ G}\Omega$
- ambient temperature limit:  $-40 \text{ }^\circ\text{C} \dots +125 \text{ }^\circ\text{C}$
- are made of self-extinguishing thermoplastic resin UL 94 V0
- mechanical life:  $\geq 500$  cycles
- contact resistance:  $\leq 1 \text{ m}\Omega$
- for maximum current load, see the following load curves inserts, for more information see page 494

contacts side (front view)



contacts side (front view)



- inserts with plate for section conductors: 0.75 - 4 mm<sup>2</sup> - AWG 18 - 12
- conductors stripping length: 7 mm
- terminal screw torque: 0.5 Nm (4.4 lb.in), for more information see page 21 and 22

- inserts without plate for section prepared conductors: 0.25 - 2.5 mm<sup>2</sup> - AWG 24 - 14
- conductors stripping length: 7 mm
- terminal screw torque: 0.5 Nm (4.4 lb.in), for more information see page 21 and 22

dimensions shown are not binding  
and may be changed without notice

CDA



enclosures:  
**size "49.16"** page:  
**C-TYPE IP65/IP66** ..... 208 - 210  
**aggressive environments** ..... 326  
**EMC** ..... 346  
 panel supports: page:  
**COB + adaptor** ..... 410 - 412

- for contact crimping instructions, please see the crimping tool section (16A contacts, CCF, CCM and CC...AN series) on pages 466, 470, 480, 482, 484, 486

**inserts, crimp connections**



**16A crimp contacts normal and for advanced opening silver and gold plated**



description	part No.	part No.	part No.
-------------	----------	----------	----------

without contacts (to be ordered separately)  
 female inserts for female contacts  
 male inserts for male contacts

**CDCF 10**  
**CDCM 10**

16A female contacts

Area	AWG	Configuration
0.14-0.37 mm <sup>2</sup>	AWG 26-22	three grooves
0.5 mm <sup>2</sup>	AWG 20	with no grooves
0.75 mm <sup>2</sup>	AWG 18	one groove (back side)
1 mm <sup>2</sup>	AWG 18	one groove
1.5 mm <sup>2</sup>	AWG 16	two grooves
2.5 mm <sup>2</sup>	AWG 14	three grooves
3 mm <sup>2</sup>	AWG 12	one wide groove
4 mm <sup>2</sup>	AWG 12	with no grooves

16A male contacts

Area	AWG	Configuration
0.14-0.37 mm <sup>2</sup>	AWG 26-22	three grooves
0.5 mm <sup>2</sup>	AWG 20	with no grooves
0.75 mm <sup>2</sup>	AWG 18	one groove (back side)
1 mm <sup>2</sup>	AWG 18	one groove
1.5 mm <sup>2</sup>	AWG 16	two grooves
2.5 mm <sup>2</sup>	AWG 14	three grooves
3 mm <sup>2</sup>	AWG 12	one wide groove
4 mm <sup>2</sup>	AWG 12	with no grooves

16A male crimp contacts for advanced opening

Area	AWG	Configuration
0.5 mm <sup>2</sup>	AWG 20	with no grooves
0.75 mm <sup>2</sup>	AWG 18	one groove (back side)
1 mm <sup>2</sup>	AWG 18	one groove
1.5 mm <sup>2</sup>	AWG 16	two grooves
2.5 mm <sup>2</sup>	AWG 14	three grooves

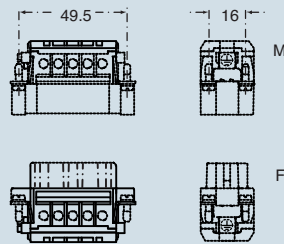
part No.	plating	part No.
CCFA 0.3	silver plated	CCFD 0.3
CCFA 0.5		CCFD 0.5
CCFA 0.7		CCFD 0.7
CCFA 1.0		CCFD 1.0
CCFA 1.5		CCFD 1.5
CCFA 2.5		CCFD 2.5
CCFA 3.0	gold plated	CCFD 3.0
CCFA 4.0		CCFD 4.0

part No.	plating	part No.
CCMA 0.3	silver plated	CCMD 0.3
CCMA 0.5		CCMD 0.5
CCMA 0.7		CCMD 0.7
CCMA 1.0		CCMD 1.0
CCMA 1.5		CCMD 1.5
CCMA 2.5		CCMD 2.5
CCMA 3.0	gold plated	CCMD 3.0
CCMA 4.0		CCMD 4.0

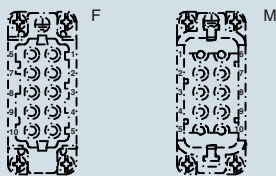
CC 0.5 AN
CC 0.7 AN
CC 1.0 AN
CC 1.5 AN
CC 2.5 AN

- characteristics according to EN 61984:  
**16A 250V 4kV 3**  
**16A 230/400V 4kV 2**
- UL, CSA, CCC, GL, GOST certified
- rated voltage according to UL/CSA: 600V
- insulation resistance: ≥ 10 GΩ
- ambient temperature limit: -40 °C ... +125 °C
- are made of self-extinguishing thermoplastic resin UL 94 V0
- mechanical life: ≥ 500 cycles
- contact resistance: ≤ 1 mΩ
- for maximum current load, see the following load curves inserts, for more information see page 494

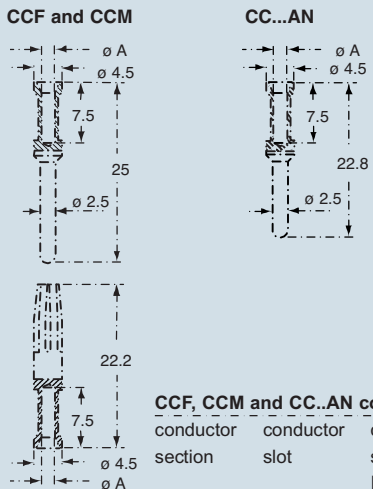
dimensions in mm



contacts side (front view)

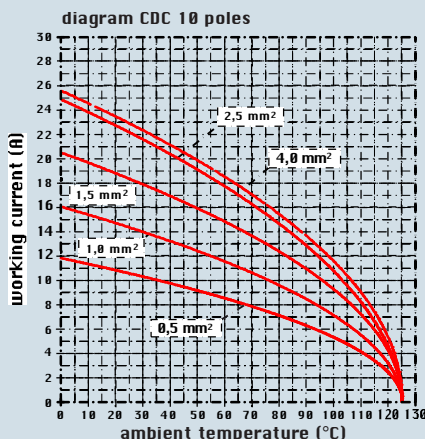


dimensions in mm



**CCF, CCM and CC...AN contacts**

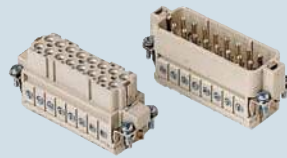
conductor section	conductor slot	conductors stripping length
mm <sup>2</sup>	ø A (mm)	(mm)
0.14-0.37	0.9	7.5
0.5	1.1	7.5
0.75	1.3	7.5
1.0	1.45	7.5
1.5	1.8	7.5
2.5	2.2	7.5
3	2.55	7.5
4	2.85	7.5



dimensions shown are not binding and may be changed without notice

enclosures:  
 size "66.16" page:  
**C-TYPE IP65/IP66** ..... 211 - 213  
**aggressive environments** ..... 327  
**EMC** ..... 347  
 panel supports: page:  
**COB + adaptor** ..... 410 - 412

**inserts,  
 screw terminal connection**



**inserts,  
 screw terminal connection**



description

part No.

part No.

indirect, with plate <sup>1)</sup>  
 female inserts with female contacts  
 male inserts with male contacts

**CDAF 16  
 CDAM 16**

direct, without plate <sup>2)</sup>  
 female inserts with female contacts  
 male inserts with male contacts

**CDAF 16 X  
 CDAM 16 X**

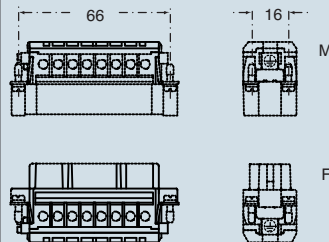
<sup>1)</sup> for non-prepared conductors



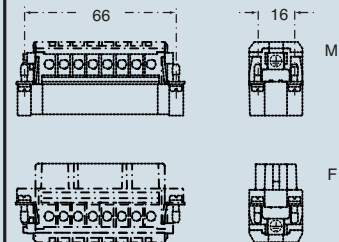
<sup>2)</sup> for conductors with bush terminal



dimensions in mm



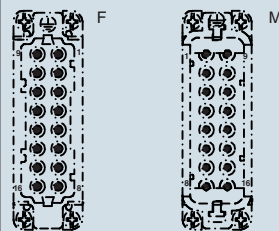
dimensions in mm



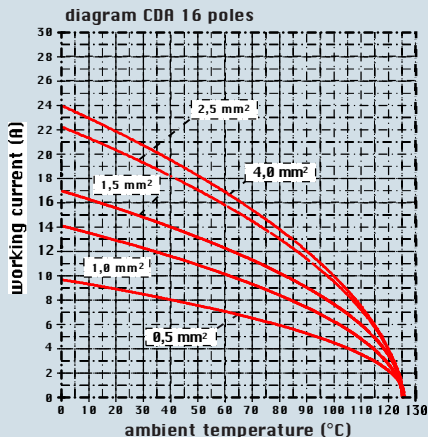
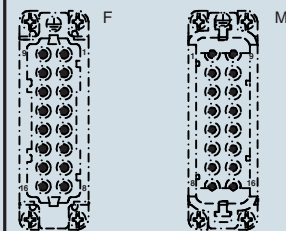
- characteristics according to EN 61984:

- 16A 250V 4kV 3**
- 16A 230/400V 4kV 2**
- UL, CSA, CCC, GL, GOST certified
- rated voltage according to UL/CSA: 600V
- insulation resistance:  $\geq 10 \text{ G}\Omega$
- ambient temperature limit:  $-40 \text{ }^\circ\text{C} \dots +125 \text{ }^\circ\text{C}$
- are made of self-extinguishing thermoplastic resin UL 94 V0
- mechanical life:  $\geq 500$  cycles
- contact resistance:  $\leq 1 \text{ m}\Omega$
- for maximum current load, see the following load curves inserts, for more information see page 494

contacts side (front view)



contacts side (front view)



- inserts with plate for section conductors: 0.75 - 4 mm<sup>2</sup> - AWG 18 - 12
- conductors stripping length: 7 mm
- terminal screw torque: 0.5 Nm (4.4 lb.in), for more information see page 21 and 22

- inserts without plate for section prepared conductors: 0.25 - 2.5 mm<sup>2</sup> - AWG 24 - 14
- conductors stripping length: 7 mm
- terminal screw torque: 0.5 Nm (4.4 lb.in), for more information see page 21 and 22

dimensions shown are not binding  
 and may be changed without notice

CDA



enclosures:  
**size "66.16"** page:  
**C-TYPE IP65/IP66** ..... 211 - 213  
**aggressive environments** ..... 327  
**EMC** ..... 347  
 panel supports: page:  
**COB + adaptor** ..... 410 - 412

- for contact crimping instructions, please see the crimping tool section (16A contacts, CCF, CCM and CC...AN series) on pages 466, 470, 480, 482, 484, 486

**inserts, crimp connections**



**16A crimp contacts normal and for advanced opening silver and gold plated**



description	part No.	part No.	part No.
-------------	----------	----------	----------

without contacts (to be ordered separately)  
 female inserts for female contacts  
 male inserts for male contacts

**CDCF 16**  
**CDCM 16**

**16A female contacts**

0.14-0.37 mm <sup>2</sup>	AWG 26-22	three grooves
0.5 mm <sup>2</sup>	AWG 20	with no grooves
0.75 mm <sup>2</sup>	AWG 18	one groove (back side)
1 mm <sup>2</sup>	AWG 18	one groove
1.5 mm <sup>2</sup>	AWG 16	two grooves
2.5 mm <sup>2</sup>	AWG 14	three grooves
3 mm <sup>2</sup>	AWG 12	one wide groove
4 mm <sup>2</sup>	AWG 12	with no grooves

**16A male contacts**

0.14-0.37 mm <sup>2</sup>	AWG 26-22	three grooves
0.5 mm <sup>2</sup>	AWG 20	with no grooves
0.75 mm <sup>2</sup>	AWG 18	one groove (back side)
1 mm <sup>2</sup>	AWG 18	one groove
1.5 mm <sup>2</sup>	AWG 16	two grooves
2.5 mm <sup>2</sup>	AWG 14	three grooves
3 mm <sup>2</sup>	AWG 12	one wide groove
4 mm <sup>2</sup>	AWG 12	with no grooves

**16A male crimp contacts for advanced opening**

0.5 mm <sup>2</sup>	AWG 20	with no grooves
0.75 mm <sup>2</sup>	AWG 18	one groove (back side)
1 mm <sup>2</sup>	AWG 18	one groove
1.5 mm <sup>2</sup>	AWG 16	two grooves
2.5 mm <sup>2</sup>	AWG 14	three grooves

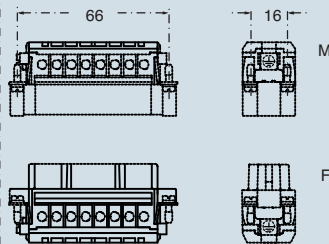
CCFA 0.3	CCFD 0.3
CCFA 0.5	CCFD 0.5
CCFA 0.7	CCFD 0.7
CCFA 1.0	CCFD 1.0
CCFA 1.5	CCFD 1.5
CCFA 2.5	CCFD 2.5
CCFA 3.0	CCFD 3.0
CCFA 4.0	CCFD 4.0

CCMA 0.3	CCMD 0.3
CCMA 0.5	CCMD 0.5
CCMA 0.7	CCMD 0.7
CCMA 1.0	CCMD 1.0
CCMA 1.5	CCMD 1.5
CCMA 2.5	CCMD 2.5
CCMA 3.0	CCMD 3.0
CCMA 4.0	CCMD 4.0

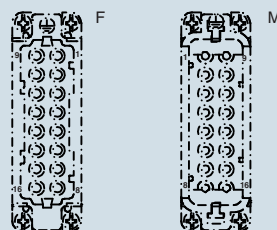
CC 0.5 AN
CC 0.7 AN
CC 1.0 AN
CC 1.5 AN
CC 2.5 AN

- characteristics according to EN 61984:  
**16A 250V 4kV 3**  
**16A 230/400V 4kV 2**
- UL, CSA, CCC, GL, GOST certified
- rated voltage according to UL/CSA: 600V
- insulation resistance: ≥ 10 GΩ
- ambient temperature limit: -40 °C ... +125 °C
- are made of self-extinguishing thermoplastic resin UL 94 V0
- mechanical life: ≥ 500 cycles
- contact resistance: ≤ 1 mΩ
- for maximum current load, see the following load curves inserts, for more information see page 494

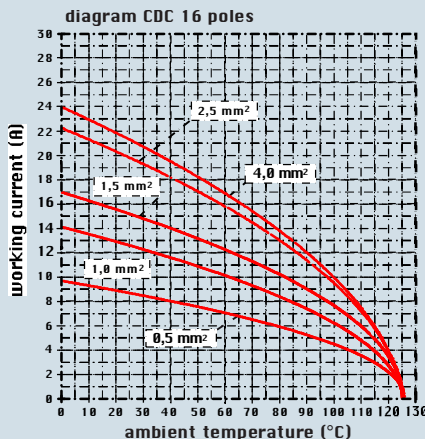
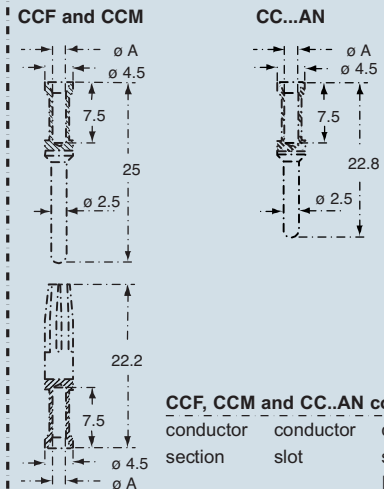
**dimensions in mm**



**contacts side (front view)**



**dimensions in mm**



**CCF, CCM and CC...AN contacts**

conductor section	conductor slot	conductors stripping length
mm <sup>2</sup>	ø A (mm)	(mm)
0.14-0.37	0.9	7.5
0.5	1.1	7.5
0.75	1.3	7.5
1.0	1.45	7.5
1.5	1.8	7.5
2.5	2.2	7.5
3	2.55	7.5
4	2.85	7.5

dimensions shown are not binding and may be changed without notice

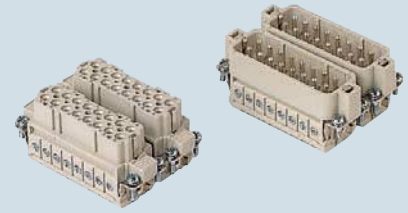
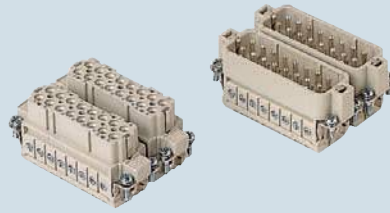
enclosures:  
size "66.40"

page:

C-TYPE IP65/IP66 ..... 215 - 217  
aggressive environments ..... 328

inserts,  
screw terminal connection

inserts,  
screw terminal connection



description

part No.

part No.

part No.

part No.

indirect, with plate <sup>1)</sup>  
female inserts, No. (1-16) and (17-32)  
male inserts, No. (1-16) and (17-32)

**CDAF 16**  
**CDAM 16**

**CDAF 16 N**  
**CDAM 16 N**

direct, without plate <sup>2)</sup>  
female inserts, No. (1-16) and (17-32)  
male inserts, No. (1-16) and (17-32)

**CDAF 16 X**  
**CDAM 16 X**

**CDAF 16 XN**  
**CDAM 16 XN**

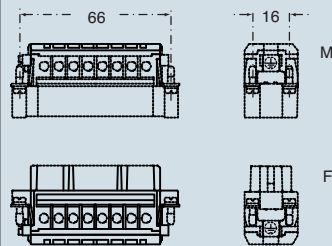
<sup>1)</sup> for non-prepared conductors



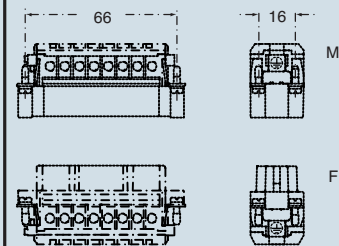
<sup>2)</sup> for conductors with bush terminal



dimensions in mm



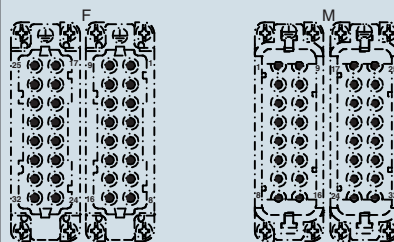
dimensions in mm



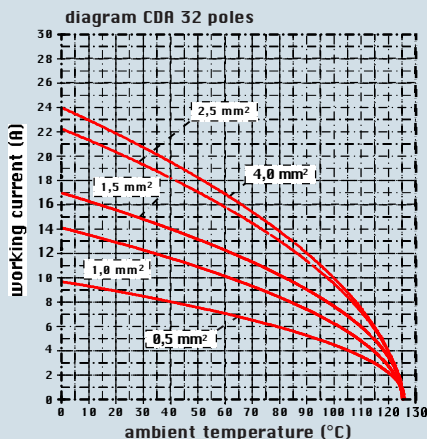
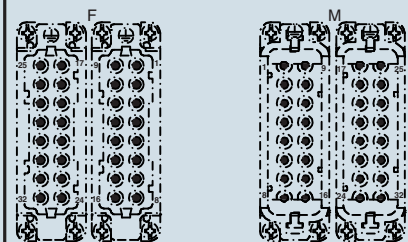
- characteristics according to EN 61984:

- 16A 250V 4kV 3**
- 16A 230/400V 4kV 2**
- UL, CSA, CCC, GL, GOST certified
- rated voltage according to UL/CSA: 600V
- insulation resistance:  $\geq 10 \text{ G}\Omega$
- ambient temperature limit:  $-40 \text{ }^\circ\text{C} \dots +125 \text{ }^\circ\text{C}$
- are made of self-extinguishing thermoplastic resin UL 94 V0
- mechanical life:  $\geq 500$  cycles
- contact resistance:  $\leq 1 \text{ m}\Omega$
- for maximum current load, see the following load curves inserts, for more information see page 494

contacts side (front view)



contacts side (front view)



- inserts with plate for section conductors: 0.75 - 4 mm<sup>2</sup> - AWG 18 - 12
- conductors stripping length: 7 mm
- terminal screw torque: 0.5 Nm (4.4 lb.in), for more information see page 21 and 22

- inserts without plate for section prepared conductors: 0.25 - 2.5 mm<sup>2</sup> - AWG 24 - 14
- conductors stripping length: 7 mm
- terminal screw torque: 0.5 Nm (4.4 lb.in), for more information see page 21 and 22

dimensions shown are not binding  
and may be changed without notice

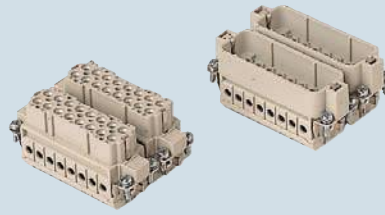
enclosures:  
size "66.40"

page:

C-TYPE IP65/IP66 ..... 215 - 217  
aggressive environments ..... 328

- for contact crimping instructions, please see the crimping tool section (16A contacts, CCF, CCM and CC...AN series) on pages 466, 470, 480, 482, 484, 486

inserts, crimp connections



16A crimp contacts  
normal and for advanced opening  
silver and gold plated



description

part No.

part No.

part No.

part No.

without contacts (to be ordered separately)  
female inserts, No. (1-16) and (17-32)  
male inserts, No. (1-16) and (17-32)

CDCF 16  
CDCM 16

CDCF 16 N  
CDCM 16 N

16A female contacts

0.14-0.37 mm <sup>2</sup>	AWG 26-22	three grooves
0.5 mm <sup>2</sup>	AWG 20	with no grooves
0.75 mm <sup>2</sup>	AWG 18	one groove (back side)
1 mm <sup>2</sup>	AWG 18	one groove
1.5 mm <sup>2</sup>	AWG 16	two grooves
2.5 mm <sup>2</sup>	AWG 14	three grooves
3 mm <sup>2</sup>	AWG 12	one wide groove
4 mm <sup>2</sup>	AWG 12	with no grooves

16A male contacts

0.14-0.37 mm <sup>2</sup>	AWG 26-22	three grooves
0.5 mm <sup>2</sup>	AWG 20	with no grooves
0.75 mm <sup>2</sup>	AWG 18	one groove (back side)
1 mm <sup>2</sup>	AWG 18	one groove
1.5 mm <sup>2</sup>	AWG 16	two grooves
2.5 mm <sup>2</sup>	AWG 14	three grooves
3 mm <sup>2</sup>	AWG 12	one wide groove
4 mm <sup>2</sup>	AWG 12	with no grooves

16A male crimp contacts for advanced opening

0.5 mm <sup>2</sup>	AWG 20	with no grooves
0.75 mm <sup>2</sup>	AWG 18	one groove (back side)
1 mm <sup>2</sup>	AWG 18	one groove
1.5 mm <sup>2</sup>	AWG 16	two grooves
2.5 mm <sup>2</sup>	AWG 14	three grooves

silver plated

CCFA 0.3
CCFA 0.5
CCFA 0.7
CCFA 1.0
CCFA 1.5
CCFA 2.5
CCFA 3.0
CCFA 4.0

gold plated

CCFD 0.3
CCFD 0.5
CCFD 0.7
CCFD 1.0
CCFD 1.5
CCFD 2.5
CCFD 3.0
CCFD 4.0

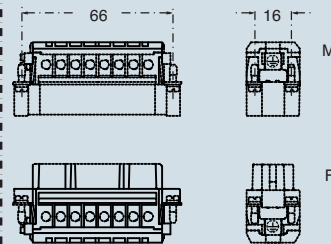
CCMA 0.3
CCMA 0.5
CCMA 0.7
CCMA 1.0
CCMA 1.5
CCMA 2.5
CCMA 3.0
CCMA 4.0

CCMD 0.3
CCMD 0.5
CCMD 0.7
CCMD 1.0
CCMD 1.5
CCMD 2.5
CCMD 3.0
CCMD 4.0

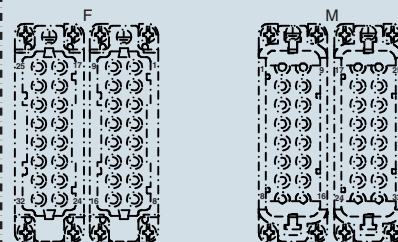
CC 0.5 AN
CC 0.7 AN
CC 1.0 AN
CC 1.5 AN
CC 2.5 AN

- characteristics according to EN 61984:  
**16A 250V 4kV 3**  
**16A 230/400V 4kV 2**
- UL, CSA, CCC, GL, GOST certified
- rated voltage according to UL/CSA: 600V
- insulation resistance: ≥ 10 GΩ
- ambient temperature limit: -40 °C ... +125 °C
- are made of self-extinguishing thermoplastic resin UL 94 V0
- mechanical life: ≥ 500 cycles
- contact resistance: ≤ 1 mΩ
- for maximum current load, see the following load curves inserts, for more information see page 494

dimensions in mm

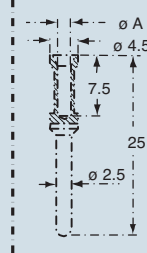


contacts side (front view)

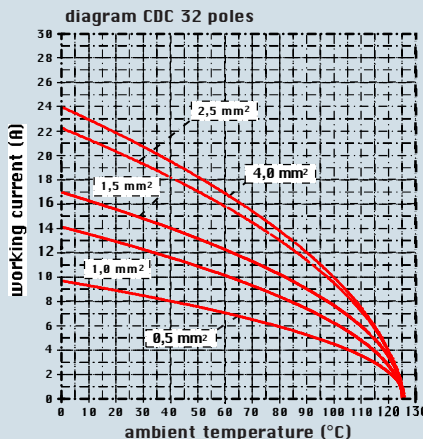
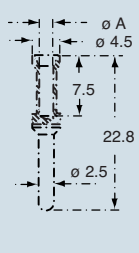


dimensions in mm

CCF and CCM



CC...AN



CCF, CCM and CC...AN contacts

conductor section	conductor slot	conductors stripping length
mm <sup>2</sup>	ø A (mm)	(mm)
0.14-0.37	0.9	7.5
0.5	1.1	7.5
0.75	1.3	7.5
1.0	1.45	7.5
1.5	1.8	7.5
2.5	2.2	7.5
3	2.55	7.5
4	2.85	7.5

dimensions shown are not binding and may be changed without notice