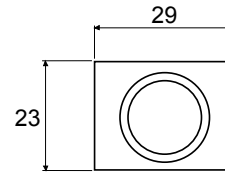


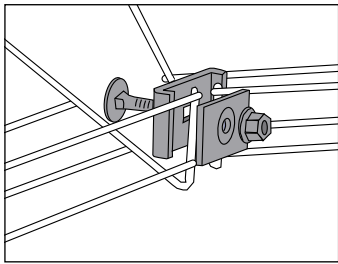
# Fitting B3

Delivered with bolt and nut.

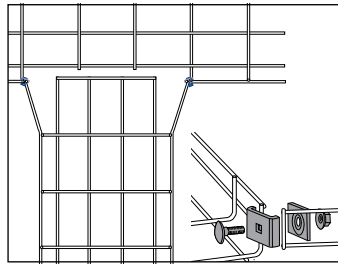


	Electro-galv. Part. No	Weight kg	Hot dip galv. Part. No	Weight kg	Stainl. steel AISI316L Part. No	Weight kg
Fitting B3	11 491 56	0,04	11 492 56	0,04	11 493 56	0,04

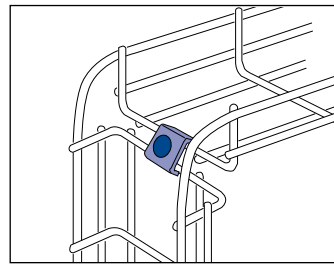
## Use and installation



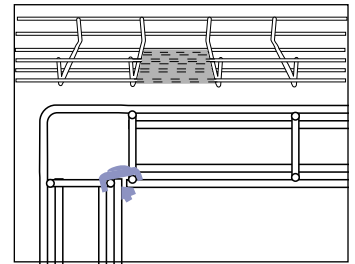
Horizontal bends are joined with Fitting B3.



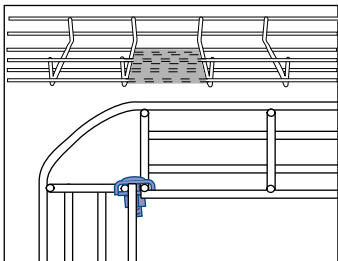
Four way and tees are joined with Fitting B3.



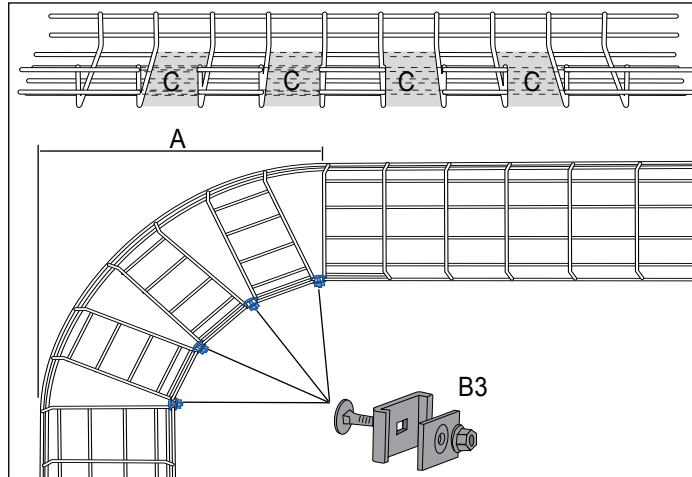
Vertical bends are joined with one or more Fitting B3, depending on wire tray width.



Wire tray 53 is shaped to straight 90° angle by cutting out marked wires and joined with Fitting B3.



Wire tray 53 is shaped to straight 90° angle by cutting out marked wires and joined with Fitting B3.



Wire tray 120-622 is shaped to straight 90° angle by cutting out every other marked wire tray section and joined with Fitting B3 according to table below.

Wire Tray	A mm	C No. of cut-out sections	Fitting B3 No.
120	300	2	2
220	550	4	4
320	820	6	6
422	1080	8	8
522	1320	10	10
622	1590	12	12