

PE...PI flush-mounting inclined socket-outlets, low voltage from over 50V up to 690V



- Compliant with EN 60309-1 and -2
- Enclosure, insert and spring lid in insulating, thermoplastic, self-extinguishing material
- RAL 7035 grey enclosure, spring lid colour coded according to the operating voltage
- Flange with anti-ageing gasket
- PE...PI types (IP44), spring lid
- PEW...PI types (IP67), spring lid with locking ring and gasket
- Terminals with retained screws
- 63A, 125A: with pilot contact
- Nickel-plated contacts, available on request for 16A and 32A (standard on 63A and 125A). For the code of products with nickel-plated contacts (socket holes, plug pins), add "N" to the pre-code of the corresponding standard product code; for example: PE becomes PEN and PEW becomes PEWN.
- IP44 and IP67 degrees of protection (EN 60529)
- ® with Italian Quality Mark

Legend

A.V. = Colour according to voltage

(*) Green may be used together with the colour of the operating range for frequencies above 60 Hz and up to a maximum of 500 Hz.

16A IP44 degree of protection



32A IP44 degree of protection



Number of poles	Frequency Hz	Voltage V	Earthing contact position h	Part No.	Colour	Part No.	Colour
2P+⊕	50 and 60	100 - 130	4	PE 1643 PI ⊕	<div style="border: 1px solid red; border-radius: 50%; padding: 10px; display: inline-block;"> A 52 x 60 mm </div>	<div style="border: 1px solid red; border-radius: 50%; padding: 10px; display: inline-block;"> B 77 x 85 mm </div>	PE 3243 PI ⊕
	50 and 60	200 - 250	6	PE 1663 PI ⊕			PE 3263 PI ⊕
	50 and 60	380 - 415	9	PE 1693 PI ⊕			PE 3293 PI ⊕
	50 and 60	480 - 500	7	PE 1673 PI ⊕			PE 3273 PI ⊕
	50 and 60	ins. transformer	12	PE 16123 PI ⊕			PE 32123 PI ⊕
	> 300 - 500	> 50	2	PE 1623 PI ⊕			PE 3223 PI ⊕
	d.c.	> 50 - 250	3	PE 1633 PI ⊕			PE 3233 PI ⊕
	d.c.	> 250	8	PE 1683 PI			PE 3283 PI
3P+⊕	50 and 60	100 - 130	4	PE 1644 PI ⊕	<div style="border: 1px solid red; border-radius: 50%; padding: 10px; display: inline-block;"> A 52 x 60 mm </div>	<div style="border: 1px solid red; border-radius: 50%; padding: 10px; display: inline-block;"> B 77 x 85 mm </div>	PE 3244 PI ⊕
	50 and 60	200 - 250	9	PE 1694 PI ⊕			PE 3294 PI ⊕
	50 and 60	380 - 415	6	PE 1664 PI ⊕			PE 3264 PI ⊕
	60	440 - 460	11	PE 16114 PI ⊕			PE 32114 PI ⊕
	50 and 60	480 - 500	7	PE 1674 PI ⊕			PE 3274 PI ⊕
	50 and 60	600 - 690	5	PE 1654 PI			PE 3254 PI
	50	380	3	PE 1634 PI ⊕			PE 3234 PI ⊕
	60	440	3	PE 1634 PI ⊕			PE 3234 PI ⊕
	100 - 300	> 50	10	PE 16104 PI ⊕			PE 32104 PI ⊕
	> 300 - 500	> 50	2	PE 1624 PI ⊕			PE 3224 PI ⊕
	3P+N+⊕	50 and 60	57/100 - 75/130	4			PE 1645 PI ⊕
50 and 60		120/208 - 144/250	9	PE 1695 PI ⊕	PE 3295 PI ⊕		
50 and 60		200/346 - 240/415	6	PE 1665 PI ⊕	PE 3265 PI ⊕		
50 and 60		277/480 - 288/500	7	PE 1675 PI ⊕	PE 3275 PI ⊕		
50 and 60		347/600 - 400/690	5	PE 1655 PI	PE 3255 PI		
60		250/440 - 265/460	11	PE 16115 PI ⊕	PE 32115 PI ⊕		
50		220/380	3	PE 1635 PI ⊕	PE 3235 PI ⊕		
60		250/440	3	PE 1635 PI ⊕	PE 3235 PI ⊕		
> 300 - 500		> 50	2	PE 1625 PI ⊕	PE 3225 PI ⊕		

A 52 x 60 mm

FM 2451 PIN



FM 3236 PIN



B 77 x 85 mm

A 52 x 60 mm with adapter FM 910 RI

FM 4272 PI



FM 3251 PI



FM 2451 PI



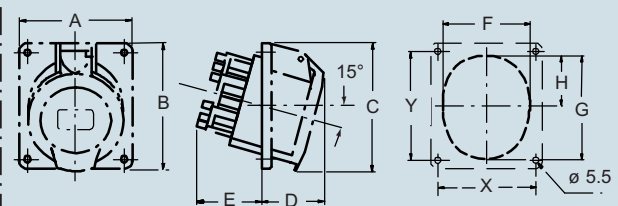
FM 3236 PI



- Type **A** sockets can be supplied on request with dimensions 77 x 85 mm, the Part No. varies from PI to PIF

dimensions in mm

(16 / 32A) PE ... PI



PE ... PI	A	B	C	D	E	F	G	H	X	Y	
16A	2P+⊕	64	82	82	38	46	52	62	30	52	60
	3P+⊕	64	82	82	42	47	57	65	28	52	60
	3P+N+⊕	92	100	100	43	47	66	78	37.5	77	85
32A	2P+⊕	92	100	100	40	55	68	76	35.5	77	85
	3P+⊕	92	100	100	40	55	68	76	35.5	77	85
	3P+N+⊕	92	102	102	43	55	74	86	39.5	77	85

dimensions shown are not binding and may be changed without notice

PEW...PI flush-mounting inclined socket-outlets, low voltage from over 50V up to 690V



16A
IP67 degree of protection



32A
IP67 degree of protection



63A
IP67 degree of protection



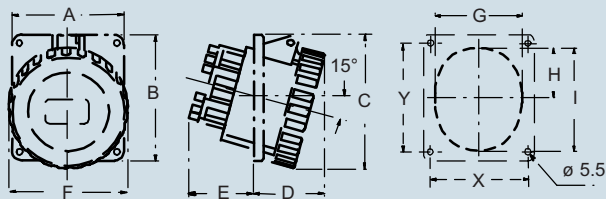
125A
IP67 degree of protection



Part No.	Colour	Part No.	Colour	Part No.	Colour	Part No.	Colour
PEW 1643 PI ⊕	<div style="border: 1px solid red; border-radius: 50%; padding: 10px; display: inline-block;"> A 52 x 60 mm </div>	PEW 3243 PI ⊕	<div style="border: 1px solid red; border-radius: 50%; padding: 10px; display: inline-block;"> B 77 x 85 mm </div>	PEW 6343 PI ⊕	<div style="border: 1px solid red; border-radius: 50%; padding: 10px; display: inline-block;"> A 52 x 60 mm </div>	PEW 12543 PI ⊕	<div style="border: 1px solid red; border-radius: 50%; padding: 10px; display: inline-block;"> B 77 x 85 mm </div>
PEW 1663 PI ⊕		PEW 3263 PI ⊕		PEW 6363 PI ⊕		PEW 12563 PI ⊕	
PEW 1693 PI ⊕		PEW 3293 PI ⊕		PEW 6393 PI ⊕		PEW 12593 PI ⊕	
PEW 1673 PI ⊕		PEW 3273 PI ⊕		PEW 6373 PI ⊕		PEW 12573 PI ⊕	
PEW 16123 PI ⊕		PEW 32123 PI ⊕		PEW 63123 PI ⊕		PEW 125123 PI ⊕	
PEW 1623 PI ⊕		PEW 3223 PI ⊕		PEW 6323 PI ⊕		PEW 12523 PI ⊕	
PEW 1633 PI ⊕		PEW 3233 PI ⊕		PEW 6333 PI ⊕		PEW 12533 PI ⊕	
PEW 1683 PI ⊕		PEW 3283 PI ⊕		PEW 6383 PI ⊕		PEW 12583 PI ⊕	
PEW 1644 PI ⊕		<div style="border: 1px solid red; border-radius: 50%; padding: 10px; display: inline-block;"> A 52 x 60 mm </div>		PEW 3244 PI ⊕		<div style="border: 1px solid red; border-radius: 50%; padding: 10px; display: inline-block;"> B 77 x 85 mm </div>	
PEW 1694 PI ⊕	PEW 3294 PI ⊕		PEW 6394 PI ⊕	PEW 12594 PI ⊕			
PEW 1664 PI ⊕	PEW 3264 PI ⊕		PEW 6364 PI ⊕	PEW 12564 PI ⊕			
PEW 16114 PI ⊕	PEW 32114 PI ⊕		PEW 63114 PI ⊕	PEW 125114 PI ⊕			
PEW 1674 PI ⊕	PEW 3274 PI ⊕		PEW 6374 PI ⊕	PEW 12574 PI ⊕			
PEW 1654 PI ⊕	PEW 3254 PI ⊕		PEW 6354 PI ⊕	PEW 12554 PI ⊕			
PEW 1634 PI ⊕	PEW 3234 PI ⊕		PEW 6334 PI ⊕	PEW 12534 PI ⊕			
PEW 1634 PI ⊕	PEW 3234 PI ⊕		PEW 6334 PI ⊕	PEW 12534 PI ⊕			
PEW 16104 PI ⊕	PEW 32104 PI ⊕		PEW 63104 PI ⊕	PEW 125104 PI ⊕			
PEW 1624 PI ⊕	PEW 3224 PI ⊕	PEW 6324 PI ⊕	PEW 12524 PI ⊕				
PEW 1645 PI ⊕	<div style="border: 1px solid red; border-radius: 50%; padding: 10px; display: inline-block;"> B 77 x 85 mm </div>	PEW 3245 PI ⊕	<div style="border: 1px solid red; border-radius: 50%; padding: 10px; display: inline-block;"> B 77 x 85 mm </div>	PEW 6345 PI ⊕	<div style="border: 1px solid red; border-radius: 50%; padding: 10px; display: inline-block;"> A 52 x 60 mm </div>	PEW 12545 PI ⊕	<div style="border: 1px solid red; border-radius: 50%; padding: 10px; display: inline-block;"> B 77 x 85 mm </div>
PEW 1695 PI ⊕		PEW 3295 PI ⊕		PEW 6395 PI ⊕		PEW 12595 PI ⊕	
PEW 1665 PI ⊕		PEW 3265 PI ⊕		PEW 6365 PI ⊕		PEW 12565 PI ⊕	
PEW 1675 PI ⊕		PEW 3275 PI ⊕		PEW 6375 PI ⊕		PEW 12575 PI ⊕	
PEW 1655 PI ⊕		PEW 3255 PI ⊕		PEW 6355 PI ⊕		PEW 12555 PI ⊕	
PEW 16115 PI ⊕		PEW 32115 PI ⊕		PEW 63115 PI ⊕		PEW 125115 PI ⊕	
PEW 1635 PI ⊕		PEW 3235 PI ⊕		PEW 6335 PI ⊕		PEW 12535 PI ⊕	
PEW 1635 PI ⊕		PEW 3235 PI ⊕		PEW 6335 PI ⊕		PEW 12535 PI ⊕	
PEW 1625 PI ⊕		PEW 3225 PI ⊕		PEW 6325 PI ⊕		PEW 12525 PI ⊕	

dimensions in mm

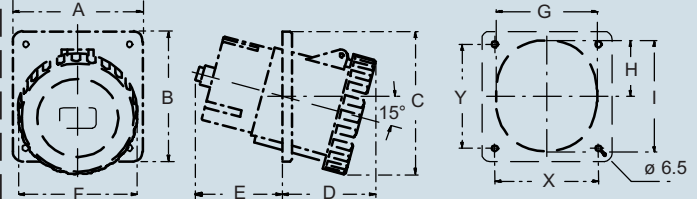
(16 / 32A) PEW ... PI



PEW ... PI	A	B	C	D	E	F	G	H	I	X	Y
16A 2P+⊕	65	82	83	48	35	70	50	29	58	52	60
3P+⊕	65	82	87	48	37	78	58	30	65	52	60
3P+N+⊕	90	100	102	50	38	86	66	35	75	77	85
32A 2P+⊕	90	100	116	50	50	92	68	37	78	77	85
3P+⊕	90	100	116	50	50	92	68	37	78	77	85
3P+N+⊕	90	100	118	50	50	100	73	42.5	86	77	85

dimensions in mm

(63 / 125A) PEW ... PI



PEW ... PI	A	B	C	D	E	F	G	H	I	X	Y
63A 2P+⊕	100	107	124	84	55	107	82	45	94	77	85
3P+⊕	100	107	124	84	55	107	82	45	94	77	85
3P+N+⊕	100	107	124	84	55	107	82	45	94	77	85
125A 2P+⊕	130	130	143	94	87	119	102	56	112	104	104
3P+⊕	130	130	143	94	87	119	102	56	112	104	104
3P+N+⊕	130	130	143	94	87	119	102	56	112	104	104

PE...PQ flush-mounting straight socket-outlets, low voltage from over 50V up to 690V



- Compliant with EN 60309-1 and -2
- Enclosure, insert and spring lid in insulating, thermoplastic, self-extinguishing material
- RAL 7035 grey enclosure, spring lid colour coded according to the operating voltage
- Flange with anti-ageing gasket
- PE...PQ types (IP44), spring lid
- PEW...PQ types (IP67), spring lid with locking ring and gasket
- Terminals with retained screws
- 63A, 125A: with pilot contact
- Nickel-plated contacts, available on request for 16A and 32A (standard on 63A and 125A). For the code of products with nickel-plated contacts (socket holes, plug pins), add "N" to the pre-code of the corresponding standard product code; for example: PE becomes PEN and PEW becomes PEWN.
- IP44 and IP67 degrees of protection (EN 60529)
- with Italian Quality Mark

Legend

A.V. = Colour according to voltage

(*) Green may be used together with the colour of the operating range for frequencies above 60 Hz and up to a maximum of 500 Hz.

16A
IP44 degree of protection



32A
IP44 degree of protection



Number of poles	Frequency Hz	Voltage V	Earthing contact position h	Part No.	Colour	Part No.	Colour			
2P+⊕	50 and 60	100 - 130	4	PE 1643 PQ	 52 x 52 mm	PE 3243 PQ	 60 x 60 mm			
	50 and 60	200 - 250	6	PE 1663 PQ		PE 3263 PQ				
	50 and 60	380 - 415	9	PE 1693 PQ		PE 3293 PQ				
	50 and 60	480 - 500	7	PE 1673 PQ		PE 3273 PQ				
	50 and 60	ins. transformer	12	PE 16123 PQ		PE 32123 PQ				
	> 300 - 500	> 50	2	PE 1623 PQ		PE 3223 PQ				
	d.c.	> 50 - 250	3	PE 1633 PQ		PE 3233 PQ				
	d.c.	> 250	8	PE 1683 PQ		PE 3283 PQ				
3P+⊕	50 and 60	100 - 130	4	PE 1644 PQ	 52 x 52 mm	PE 3244 PQ	 60 x 60 mm			
	50 and 60	200 - 250	9	PE 1694 PQ		PE 3294 PQ				
	50 and 60	380 - 415	6	PE 1664 PQ		PE 3264 PQ				
	60	440 - 460	11	PE 16114 PQ		PE 32114 PQ				
	50 and 60	480 - 500	7	PE 1674 PQ		PE 3274 PQ				
	50 and 60	600 - 690	5	PE 1654 PQ		PE 3254 PQ				
	50	380	3	PE 1634 PQ		PE 3234 PQ				
	60	440	3	PE 1634 PQ		PE 3234 PQ				
	100 - 300	> 50	10	PE 16104 PQ		PE 32104 PQ				
	> 300 - 500	> 50	2	PE 1624 PQ		PE 3224 PQ				
	3P+N+⊕	50 and 60	57/100 - 75/130	4		PE 1645 PQ		 60 x 60 mm	PE 3245 PQ	 60 x 60 mm
		50 and 60	120/208 - 144/250	9		PE 1695 PQ			PE 3295 PQ	
50 and 60		200/346 - 240/415	6	PE 1665 PQ	PE 3265 PQ					
50 and 60		277/480 - 288/500	7	PE 1675 PQ	PE 3275 PQ					
50 and 60		347/600 - 400/690	5	PE 1655 PQ	PE 3255 PQ					
60		250/440 - 265/460	11	PE 16115 PQ	PE 32115 PQ					
50		220/380	3	PE 1635 PQ	PE 3235 PQ					
60		250/440	3	PE 1635 PQ	PE 3235 PQ					
> 300 - 500		> 50	2	PE 1625 PQ	PE 3225 PQ					

D 60 x 60 mm

BC 4034 T3
BC 1123 CS
BC 1123 Q
BC 1123 Q2
BC 1123 RQ

- Type **C** sockets can be supplied on request with dimensions 60 x 60 mm, the Part No. varies from PQ to PQF

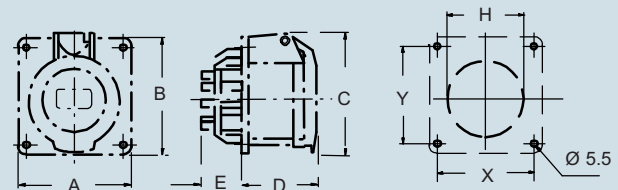
C 52 x 52 mm with adapter FM 88 RQ

QM V P4
QM V P6
FM 1043 PQ

- Type **C** sockets can be supplied on request with dimensions 60 x 60 mm, the Part No. varies from PQ to PQF

dimensions in mm

(16 / 32A) PE ... PQ



PE...PQ	A	B	C	D	E	H	X	Y
16A	2P+⊕	65	65	71	52	27	60	52
	3P+⊕	65	65	75	53	27	61.5	52
	3P+N+⊕	80	80	86	53	27	70	60
32A	2P+⊕	80	80	87	62	28	68	60
	3P+⊕	80	80	87	62	28	68	60
	3P+N+⊕	80	80	92	62	28	73	60

dimensions shown are not binding and may be changed without notice

PEW...PQ flush-mounting straight socket-outlets, low voltage from over 50V up to 690V



16A
IP67 degree of protection



32A
IP67 degree of protection



63A
IP67 degree of protection



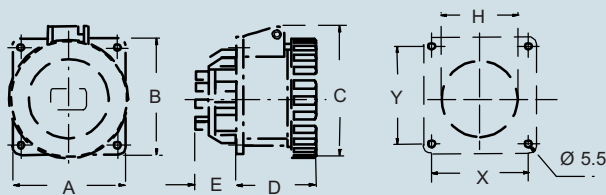
125A
IP67 degree of protection



Part No.	Colour	Part No.	Colour	Part No.	Colour	Part No.	Colour
PEW 1643 PQ ⊕	 52 x 52 mm	PEW 3243 PQ ⊕	 60 x 60 mm	PEW 6343 PQ ⊕	 60 x 60 mm	PEW 12543 PQ ⊕	 60 x 60 mm
PEW 1663 PQ ⊕		PEW 3263 PQ ⊕		PEW 6363 PQ ⊕		PEW 12563 PQ ⊕	
PEW 1693 PQ ⊕		PEW 3293 PQ ⊕		PEW 6393 PQ ⊕		PEW 12593 PQ ⊕	
PEW 1673 PQ ⊕		PEW 3273 PQ ⊕		PEW 6373 PQ ⊕		PEW 12573 PQ ⊕	
PEW 16123 PQ ⊕		PEW 32123 PQ ⊕		PEW 63123 PQ ⊕		PEW 125123 PQ ⊕	
PEW 1623 PQ ⊕		PEW 3223 PQ ⊕		PEW 6323 PQ ⊕		PEW 12523 PQ ⊕	
PEW 1633 PQ ⊕		PEW 3233 PQ ⊕		PEW 6333 PQ ⊕		PEW 12533 PQ ⊕	
PEW 1683 PQ	PEW 3283 PQ	PEW 6383 PQ	PEW 12583 PQ				
PEW 1644 PQ ⊕	 52 x 52 mm	PEW 3244 PQ ⊕	 60 x 60 mm	PEW 6344 PQ ⊕	 60 x 60 mm	PEW 12544 PQ ⊕	 60 x 60 mm
PEW 1694 PQ ⊕		PEW 3294 PQ ⊕		PEW 6394 PQ ⊕		PEW 12594 PQ ⊕	
PEW 1664 PQ ⊕		PEW 3264 PQ ⊕		PEW 6364 PQ ⊕		PEW 12564 PQ ⊕	
PEW 16114 PQ ⊕		PEW 32114 PQ ⊕		PEW 63114 PQ ⊕		PEW 125114 PQ ⊕	
PEW 1674 PQ ⊕		PEW 3274 PQ ⊕		PEW 6374 PQ ⊕		PEW 12574 PQ ⊕	
PEW 1654 PQ		PEW 3254 PQ		PEW 6354 PQ		PEW 12554 PQ	
PEW 1634 PQ ⊕		PEW 3234 PQ ⊕		PEW 6334 PQ ⊕		PEW 12534 PQ ⊕	
PEW 16104 PQ ⊕	PEW 32104 PQ ⊕						
PEW 1624 PQ ⊕	PEW 3224 PQ ⊕						
PEW 1645 PQ ⊕	 60 x 60 mm	PEW 3245 PQ ⊕	 60 x 60 mm	PEW 6345 PQ ⊕	 60 x 60 mm	PEW 12545 PQ ⊕	 60 x 60 mm
PEW 1695 PQ ⊕		PEW 3295 PQ ⊕		PEW 6395 PQ ⊕		PEW 12595 PQ ⊕	
PEW 1665 PQ ⊕		PEW 3265 PQ ⊕		PEW 6365 PQ ⊕		PEW 12565 PQ ⊕	
PEW 1675 PQ ⊕		PEW 3275 PQ ⊕		PEW 6375 PQ ⊕		PEW 12575 PQ ⊕	
PEW 1655 PQ		PEW 3255 PQ		PEW 6355 PQ		PEW 12555 PQ	
PEW 16115 PQ ⊕		PEW 32115 PQ ⊕		PEW 63115 PQ ⊕		PEW 125115 PQ ⊕	
PEW 1635 PQ ⊕		PEW 3235 PQ ⊕					
PEW 1635 PQ ⊕	PEW 3235 PQ ⊕						
PEW 1625 PQ ⊕	PEW 3225 PQ ⊕						

dimensions in mm

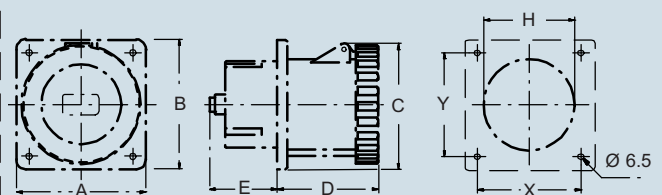
(16 / 32A) PEW ... PQ



PEW...PQ	A	B	C	D	E	H	X	Y
16A 2P+⊕	65	65	77	52	27	60	52	52
3P+⊕	65	65	85	52	27	61.5	52	52
3P+N+⊕	80	80	93	52	27	70	60	60
32A 2P+⊕	80	80	98	62	28	68	60	60
3P+⊕	80	80	98	62	28	68	60	60
3P+N+⊕	80	80	105	62	28	73	60	60

dimensions in mm

(63 / 125A) PEW ... PQ



PEW ... PQ	A	B	C	D	E	H	X	Y
63A 2P+⊕	100	107	109	92	30	73	77	85
3P+⊕	100	107	109	92	30	73	77	85
3P+N+⊕	100	107	109	92	30	73	77	85
125A 2P+⊕	130	130	130	101	68	91	104	104
3P+⊕	130	130	130	101	68	91	104	104
3P+N+⊕	130	130	130	101	68	91	104	104