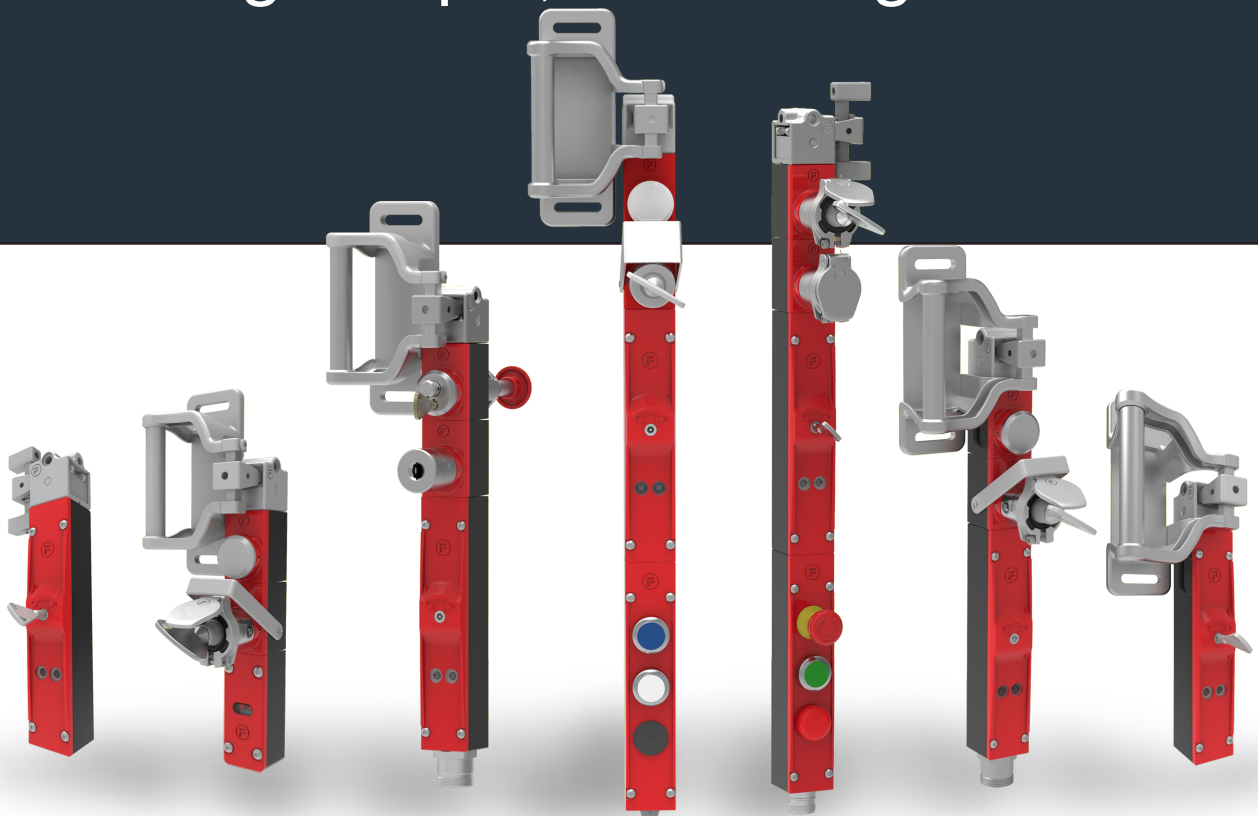


Protecting People, Protecting Productivity



NEW Slimline Switches for the
amGard*pro* Range





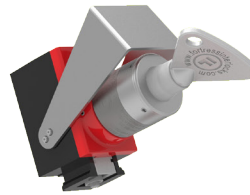
HS - Hinged Handle for use with S6 Head



S6 - Slimline Head



GF - Blank Module



EKA - Extracted Key Adaptor

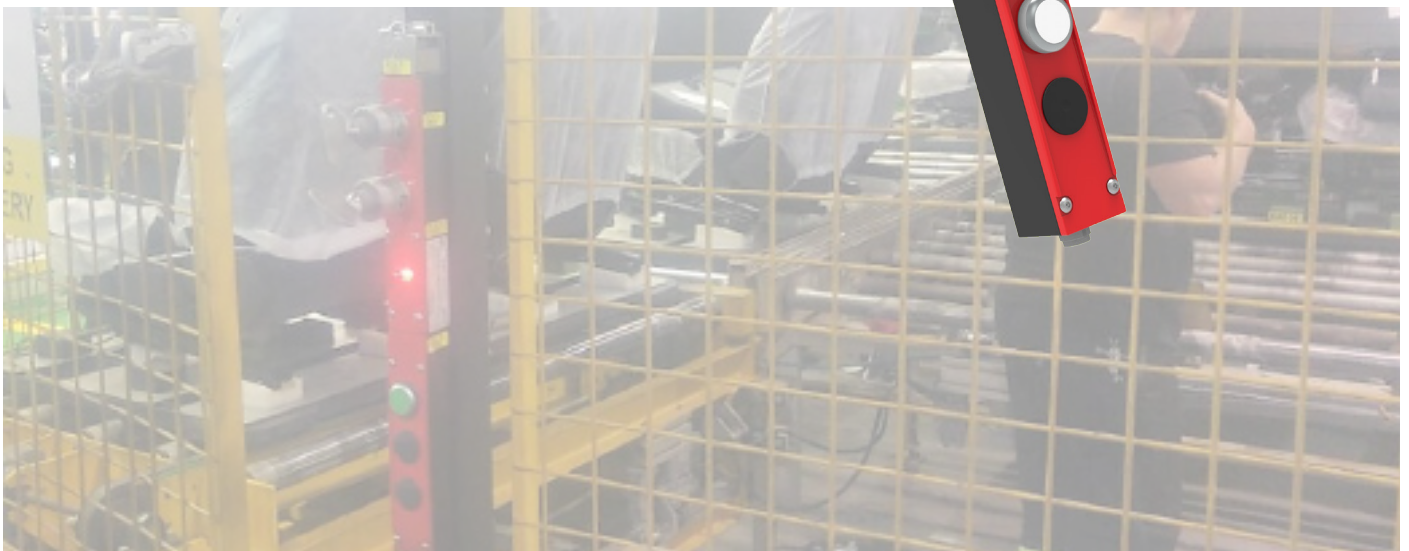
- Robust IP67 design.
- Slim 40mm metal body.
- Power to lock / Power to unlock versions.
- Wide range of adaptors.
- Configurable.
- Suitable for hinged and sliding doors.
- Release keys, control functions, emergency release options.
- Quick disconnect wiring available.
- Standards compliant: EN14119, EN13849.



ZL - Slimline Solenoid Lok Body



W1 - Slimline Option Pod Body



The **amGardpro** range of safety interlock switches now has two additional slimline modules.

- a slimline solenoid switch body
- a slimline option pod body.

These additions allow an even wider range of safety interlock switches to be configured to suit many industrial applications.

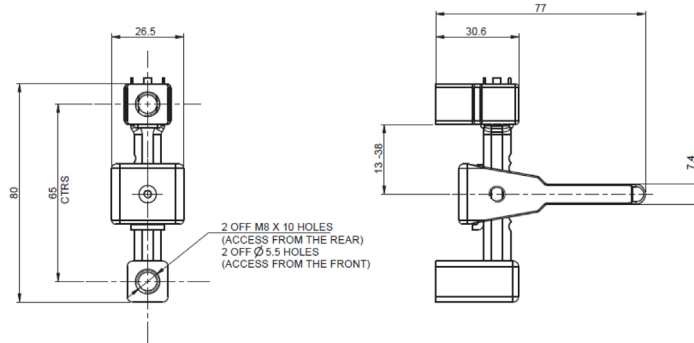
The range is supplied in enclosures sealed to IP67 but with a 40mm wide body and has a retention force of 10,000N, making it ideal for ensuring guard doors are held closed until machines and/or processes are in a safe condition. The slimline nature of the modules mean that it can be easily fitted to 50mm guarding sections or where space is limited.

Actuators							
SA		SI		SN		SS	
Short Tongue Actuator		Slidebar with Internal Handle and Short Tongue Actuator		Slidebar with Short Tongue Actuator		Slidebar with Spring and Short Tongue Actuator	
SF		HS		HL		SD	
Slidebar with Internal Handle allows locking on inside		Hinged Handle with Short Reach Actuator		Hinged Handle with Long Reach Actuator		Handle Actuator	
Head Module							
S6		Slimline Head Unit					
Electrical / Switching Locking - Slimline LOK Body				Option Pods			
ZL (Standard) ZR (Releasing)		ZL (Standard) ZR (Releasing)		Y0	Y1	W0	W1
Fully Monitored Solenoid		Un-Monitored Solenoid		Common Power Supply		Individually Wired (volt free contacts)	
Power to Lock	Power to Unlock	Power to Lock	Power to Unlock	Stand Alone Pod	To suit <i>proStop</i> or Slimline <i>proLOK</i> Body	Stand Alone Pod	To suit <i>proStop</i> or Slimline <i>proLOK</i> Body

Actuators - Short Tongue Actuator



- Used in conjunction with the S6 Slimline Head.
- Particularly useful for applications using small radius hinged doors.



Short Tongue - Options

Part Number	Description	Handing
SA1	Short Tongue Actuator	Front Facing
SA2	Short Tongue Actuator	Left Facing
SA3	Short Tongue Actuator	Rear Facing
SA4	Short Tongue Actuator	Right Facing

Actuators - proSlidebar - Short Tongue



- Used in conjunction with the S6 Slimline Head.
- Particularly useful for applications using small radius hinged doors.
- Stainless steel casing.
- Built in lock-out facility to accommodate a maximum of 4 padlocks with up to 8mm diameter shackles.

proSlidebar - Short Tongue Options

Part Number	Description	Spring	Internal Handle	Internal Handle allows locking on inside	Handing	Part Number	Description	Spring	Internal Handle	Internal Handle allows locking on inside	Handing
SI2	Slidebar		✓		Left	SS2	Slidebar	✓			Left
SI4	Slidebar		✓		Right	SS4	Slidebar	✓			Right
SN2	Slidebar				Left	SF2	Slidebar			✓	Left
SN4	Slidebar				Right	SF4	Slidebar			✓	Right

Actuators - proHinged Handle



- HS1 - Hinged Handle - Short reach for use with *proStop* units (40mm wide).
- HL1 - Hinged Handle - Long reach for use with *proLok* units (80mm wide).
- Used in conjunction with the S6 Slimline Head.
- Particularly useful for applications using front facing heads for small radius hinged doors (250mm min).
- Stainless steel casing.
- Misalignment of ± 12 mm.

proHinged Handle - Options

Part Number	Description
HS1	Hinged Handle - Short Reach for use with <i>proStop</i> units (40mm wide)
HL1	Hinged Handle - Long Reach for use with <i>proLok</i> units (80mm wide)

Actuators - proHandle



- Used in conjunction with the S6 Slimline Head.
- Actuator rotatable in 90° Increments for flexibility.
- Retention force 10,000N.
- Can be used for any door radius.

proHandle - Options

Part Number	Description
SD2	Left Handing Hand Actuator for S6 Slimline Head
SD4	Right Handing Hand Actuator for S6 Slimline Head

Head Module



- Full Stainless Steel Construction
- Ideal for fast, frequent access.
- 4 position fixing at 90° increments allowing on site handing change.
- Misalignment tolerance of +/- 12mm.
- 6mm Overtravel allowance.
- Retention force 10,000N when top fixing is used.
- Mounted upside down it is self cleaning, ideal for dusty environments.
- 40mm width.
- 250mm door radius.

Slimline Head - Options

Part Number	Description
S6	40mm wide Slimline Head

Electrical / Switching Locking - Slimline proLOK Body



Slimline proLOK - Solenoid Controlled Switch Body is used to manage activities by means of a solenoid control element.

NOTE! There are 2 derivatives, Normal and Releasing. The Releasing version is the type that MUST be used if used in conjunction with any type of internal release function (for example a pro Push IR module).

Slimline LOK Body Options

Part Number	Push IR Compatible	Solenoid Locking	Solenoid Monitoring on Solenoid
ZL411	X	Power to Unlock	✓
ZL416	X	Power to Unlock	X
ZL471	X	Power to Lock	✓
ZL461	X	Power to Lock	X
ZR411	✓	Power to Unlock	✓
ZR416	✓	Power to Unlock	X
ZR471	✓	Power to Lock	✓
ZR461	✓	Power to Lock	X

Electrical / Switching Locking - Slimline proOption Pods



The **Slimline proOption Pod** module is a robust, heavy duty pushbutton station that connects to the amGardpro range of products. When properly installed, it helps to provide safe access and control for a variety of machinery. The Slimline proOption Pod can be used as a stand alone product or as an additional module mounted below either a Slimline proLOK or a proStop unit.

A combination of up to three control elements (pushbuttons, lamps, selector switches and emergency stops) can be fitted within one Slimline proOption Pod. Control elements can be pre wired with a common power supply to minimise external wiring or supplied with volt free contacts to be individually wired.

Select Slimline proOption Pod		
proOption Pod Version	Wiring	Part No.
Stand Alone Pod	Common Power Supply	Y0
To suit proStop of Slimline proLOK Body		Y1
Stand Alone Pod	Individually Wired (volt free contacts)	W0
To suit proStop of Slimline proLOK Body		W1

Select Slimline proOption Body Buttons / Lamps / Switches



Ordering Sequence
 1 - Top Position
 2 - Middle Position
 3 - Bottom Position



Laser Engraving Information
 Engraving suitable for lamps and pushbuttons:
 2 Lines of 8 Characters

Button Type	Colour / Option	Part No.
Illuminated Buttons	Red	R
	Yellow	Y
	Green	G
	Blue	B
	White	W
	E-Stop (Twist)	U
Non-illuminated Buttons	E-Stop (with additional monitoring contacts)	H
	Black	K
	E-Stop (Twist)	E
Lamps	E-Stop (Pull)	P
	Red	1
	Yellow	2
	Green	3
	Blue	6
Illuminated Selector Switch	White	7
	Latching	L
	Momentary	M
	Latching Selector Switch (1NO 1NC)	V
Blank	Latching Key Switch (90°)	A
	No Button Fitted	0

Protecting People, Protecting Productivity



A HALMA COMPANY

Fortress Interlocks Ltd

- +44 (0)1902 349000
- +44 (0)1902 349090
- sales@fortressinterlocks.com

Fortress Interlocks Europe

- +31 (0)10 7536060
- +31 (0)10 7536050
- europe@fortressinterlocks.com

Fortress Interlocks USA

- +1 (859) 578 2390
- +1 (859) 341 2302
- us@fortressinterlocks.com

Fortress Interlocks Pty Ltd

- +61 (0)3 9771 5350
- +61 (0)3 9771 5360
- australia@fortressinterlocks.com

Fortress Interlocks China

- +86 (021) 6016 7611
- china@fortressinterlocks.com

Official Distributor



www.fortressinterlocks.com