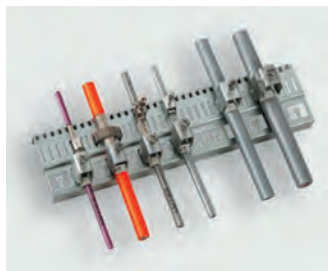


10. EMC accessories



	Chapter
EMC shield rails and accessories	10.3
EMC shield clamps and accessories	10.7
Earthing strips	10.11
Cable clips	10.13

More Informations about cabinet wiring with LÜTZE LSC AirSTREAM:
www.luetze.com and
<http://www.youtube.com/Luetzesolutions>



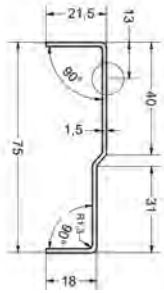
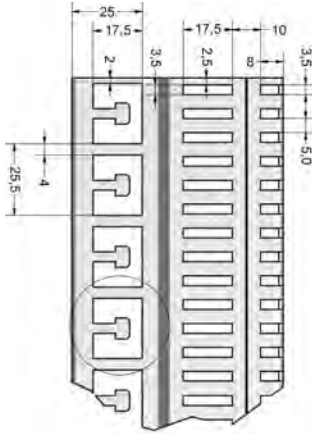
EMC accessories

EMC shield rail

EMC shield rail with cable clamping options for a wide variety of shield clamps



Dimensions



Description	Part-No.	Type	PU
EMC shield rail	346812	EMVS 03-46812	1

Technical data		346812	
Number of shield points		46	
Length		1173.00 mm	
Height		75.0 mm	
Width		21.5 mm	
Weight (kg/piece)		1.169	

General		ST37-2-G	
Material		ST37-2-G	
Surface		burr-free	
Colour		sendzimier-zinc-plated 20-25 µm	
Storage temperature range		-30 °C – 90 °C	
Operation temperature range		-5 °C – 80 °C	

usable shield clamps	for cable Ø mm	Type	Article number	PU
Shield clamp	0–12	EMVSK 12	330089	100
spring shield clamp	12–20	EMVFSK 1	330071	50
spring shield clamp	20–30	EMVFSK 2	330072	50
spring shield clamp	30–50	EMVFSK 3	330073	50
Metal tie wrap	250 mm length	KSE	330060	50
as clamping option	for cable Ø mm	Type	Article number	PU
Cable clamp	8–12	KS 0	331000	25
Cable clamp	12–16	KS 1	331001	25
Cable clamp	16–22	KS 2	331002	25
Cable clamp	34–40	KS 3	331003	25
Cable clamp	52–58	KS 4	331004	25

Comments

Mounting hole, diam. 8.5 mm, is made by the user.

Shield rails are mounted via spacing rollers DR 20x18/8.5 Article no. 330930.0100

possible screw M8x30, Article no. 331050.0100

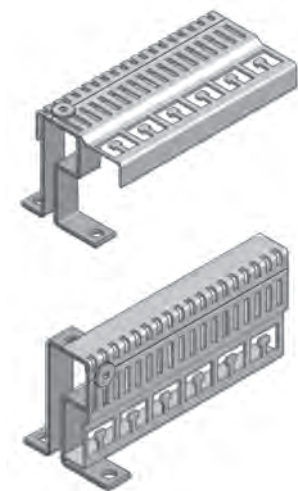
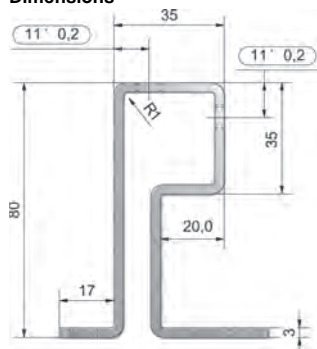
EMC accessories

Mounting bracket

Mounting bracket for fastening the EMC rail in the control cabinet



Dimensions



Description	Part-No.	Type	PU
Mounting bracket	346860.0002	HW-EMVS 03	2
Technical data			
	346860.0002		
Dimensions (w x h x d)	18.0 x 80.0 x 65.0 mm		
Material thickness	3 mm		
Thread	2xM8		
Hole diameter	2x 8.5 mm		
Weight (kg/100 pcs.)	9.800		
General			
Material	S235JR (ST37-2)		
Surface	smooth		
Colour	Punched edges bare/bright galvanised		
Storage temperature range	-30 °C – 90 °C		
Operation temperature range	-5 °C – 80 °C		

Comments
suitable for shield rail 346813

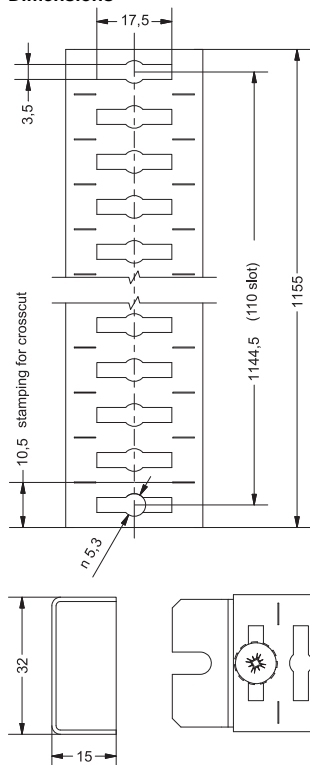
EMC accessories

EMC shield rail

EMC shield rail with cable clamping options for a wide variety of shield clamps



Dimensions



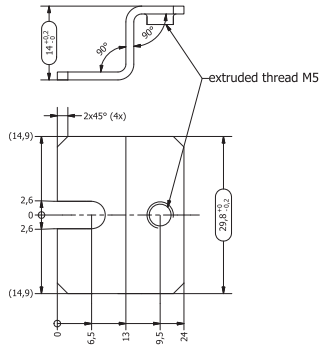
Description	Part-No.	Type	PU
EMC shield rail	346813	EMVS 04-55813	1
Technical data		346813	
Number of shield points		max. 55	
Dimensions (w x h x d)		32.0 x 15.0 x 1155.0 mm	
Weight (kg/100 pcs.)		0.466	
Hole diameter		5.3 mm	
General			
Material		Sheet steel	
Surface		galvanised	
Colour		Punched edges bare/natural	
Storage temperature range		-30 °C – 90 °C	
Operation temperature range		-5 °C – 80 °C	
Accessories		Article number	Type
Bracket		346814.0010	HW EMVS-04
			10

Bracket

Retaining bracket for fastening the EMC rail



Dimensions



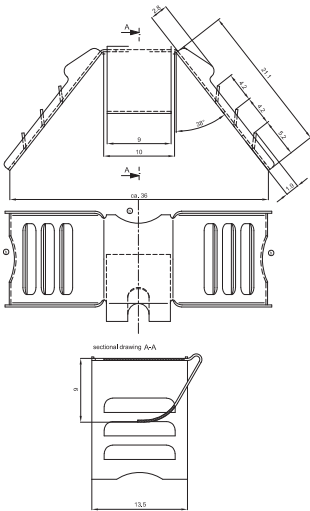
Description	Part-No.	Type	PU
Bracket			
	346814.0010	HW-EMVS 04	10
Technical data			
	346814.0010		
Dimensions (w x h x d)	29.8 x 14.0 x 24.0 mm		
Material thickness	1.5 mm		
Thread	M5		
Hole diameter	-		
Weight (kg/100 pcs.)	0.800		
General			
Material	V2A		
Surface	smooth		
Colour	Punched edges bare/natural		
Storage temperature range	-30 °C – 90 °C		
Operation temperature range	-5 °C – 80 °C		
Comments			
suitable for shield rail 346813			

EMC accessories

Shield clamp



Dimensions



Description	Part-No.	Type	PU
Shield clamp	330089	EMVSK 12	100
Technical data		330089	
For cable diameter	0-12 mm		
Weight (kg/100 pcs.)	0.250		
General			
Material	Sheet steel 1.4310		
Material thickness	0.3 mm		
Surface	smooth/burr-free		
Colour	bare/stainless		
Operation temperature range	0 °C – 60 °C		
Accessories		Article number	Type
Special pliers	346732	ZSD	1

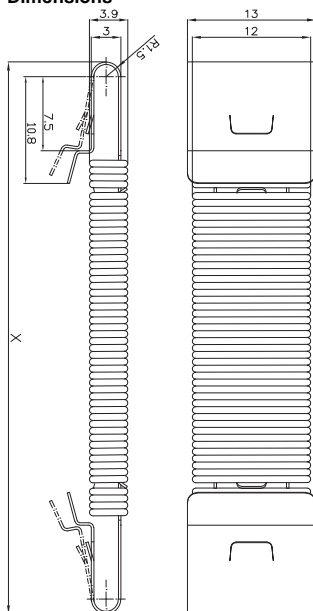
EMC accessories

Spring shield clamp Shield connection for large-diameter cables



Description	Part-No.	Type	PU
Spring shield clamp			
	330071	EMVFSK 1	50
	330072	EMVFSK 2	50
	330073	EMVFSK 3	50
Technical data	330071	330072	330073
For cable diameter	12 – 20 mm	20 – 30 mm	30 – 50 mm
Length	42.00 mm	55.00 mm	74.00 mm
Weight (kg/100 pcs.)	0.300	0.500	0.700
Tensile strength (N/mm ²)		1000–1200	
General			
Material	Sheet steel 1.4310		
Colour	bare/stainless		
Operation temperature range	0 °C – 60 °C		

Dimensions



EMC accessories

Snap-on element for snapping onto top Din rail for attaching a screening clamp



Description	Part-No.	Type	PU
Snap-on element			
Length	18.00 mm	330088	EMVRE H 1
			10

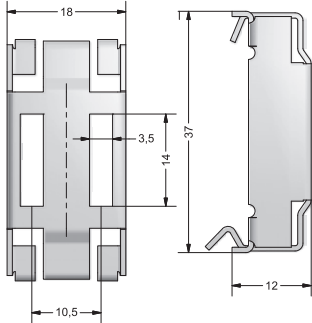
Technical data	330088
Weight (kg/100 pcs.)	0.700

General	
Material	Spring steel
Colour	bare/stainless
Operation temperature range	-20 °C – 60 °C

Comments
Suitable for all crosspieces and hat profile TS35

Application example

Dimensions



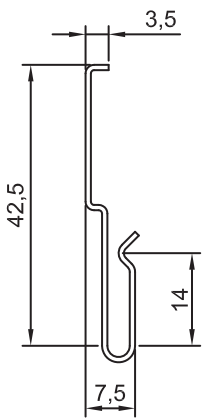
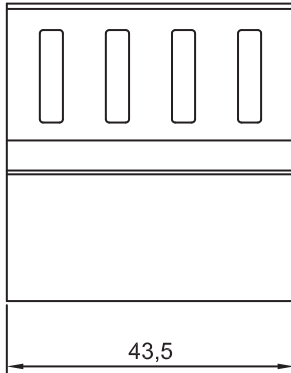
EMC accessories

Snap-on element can be snapped onto LSC profiles



Description	Part-No.	Type	PU
Snap-on element			
Length	24.00 mm	330074	EMVRE 1
	43.50 mm	330068	EMVRE 2
Technical data			
	330074		330068
Weight (kg/100 pcs.)	0.900		1.800
General			
Material	Sheet steel 1.4310		
Colour	bare/stainless		
Operation temperature range	0 °C – 60 °C		
Comments			
suitable for all webs of the series M, S, SN, MF, F, A			

Dimensions

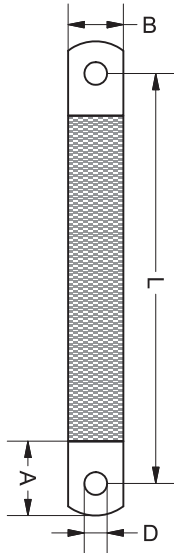


EMC accessories

Earthing strip, copper braiding, tin-plated Single wire Cu ETP UNI 5649-71, similar to DIN 72333



Dimensions



Description	Part-No.	Type	PU	
both ends drilled, cold pressed				
Cross section	10	346123.0010	EMVMB 16/100/6	10
	10	346112.0010	EMVMB 10/200/6	10
	16	346113.0010	EMVMB 16/200/8	10
	25	346116.0010	EMVMB 25/200/10	10

Technical data	346123.0010	346112.0010	346113.0010	346116.0010
Wire conductors	0.15 mm ²			
D	6.5 mm		8.5 mm	
A	22.0 mm		25.0 mm	
B	12.0 mm		15.0 mm	23.0 mm
Weight (kg/m)	0.100		0.160	0.250
Approvals	UL E220029			
L	100.0 mm		200.0 mm	

General			
Amperage range	see standards table (e.g. EN 60204)		
Cable construction	individual strands braided; cross-section rectangular		
Storage temperature range	-30 °C – 90 °C		
Operation temperature range	5 °C – 105 °C		

Accessories	Article number	Type	PU
Earthing set	331805	ES 8	1
Earthing set	331816	ES 6	1

Comments
D= hole diameter
A= sleeve length
B= width
L= distance of hole

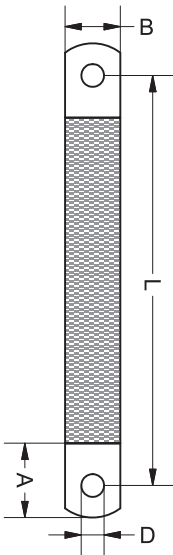
Other lengths are available on request

EMC accessories

Earthing strip, copper braiding, tin-plated Single wire Cu ETP UNI 5649-71, similar to DIN 72333



Dimensions



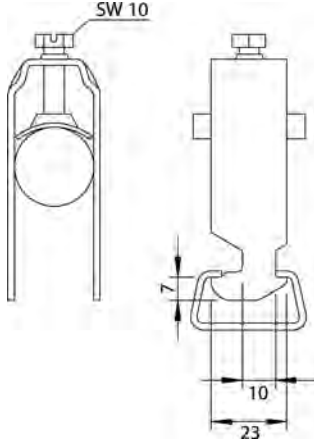
Description	Part-No.	Type	PU	
both ends drilled, cold pressed				
Cross section	10	346109.0010	EMVMB 10/300/M6	10
	16	346110.0010	EMVMB 16/300/8	10
	25	346111.0010	EMVMB 25/300/10	10
	16	346114.0010	EMVMB 16/500/8	10
Technical data				
	346109.0010	346110.0010	346111.0010	346114.0010
Wire conductors				0.15 mm ²
D	6.5 mm			8.5 mm
A	22.0 mm			25.0 mm
B	12.0 mm	15.0 mm	23.0 mm	15.0 mm
Weight (kg/m)	0.100	0.160	0.250	0.160
Approvals				UL E220029
L			300.0 mm	500.0 mm
General				
Amperage range				see standards table (e.g. EN 60204)
Cable construction				individual strands braided; cross-section rectangular
Storage temperature range				-30 °C – 90 °C
Operation temperature range				5 °C – 105 °C
Accessories				
	Article number	Type	PU	
Earthing set	331805	ES 8	1	
Earthing set	331816	ES 6	1	
Comments				
D= hole diameter A= sleeve length B= width L= distance of hole				
Other lengths are available on request				

EMC accessories

Cable clip



Dimensions



Description	Part-No.	Type	PU
Cable clip			
	331000	KS 0	10
	331001	KS 1	10
	331002	KS 2	10
	331003	KS 3	10
	331004	KS 4	10

Technical data	331000	331001	331002	331003	331004
Weight (kg/100 pcs.)	3.000	3.200	3.500	6.800	6.000
Thread	M6			M8	

General					
Material	Steel				
Colour	galvanised				
Operation temperature range	0 °C – 60 °C				
Hexagon screw	slotted				

Accessories	Article number	Type	PU
can be used on Lütze rails	345812	EMVS 03	
can be used on Lütze rails	345813	EMVS 04	
can be used on Lütze rails	333156	C rail	

Comments
Sold only with counter-shell, polypropylene plastic