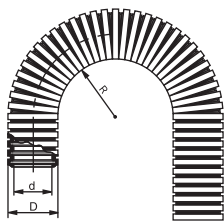


Cable conduits and conduit fittings

Cable conduit Condufix OS PA, standard style



- Free from halogen, phosphorus, cadmium
- Resistant to fuels, mineral oils, greases, alkalies
- Classification according to EN 61386-1/23, 24434066(7)-21-
- UL file No.: E 22 59 13

Technical data

Temperature range	-40 °C to +105 °C temporary 150 °C
Filament control	850 °C IEC 60695
Oxygen index	>25 % EN ISO 4589
Fire performance	V2 UL94

Design

- Polyamid 6, especially modified
- Colour black

Application

- Light up to heavy machine and plant construction
- Machines, apparatuses, devices
- Ship and railroad construction / rail transportation technology, vehicle construction as well as control cabinets and moving machine parts.

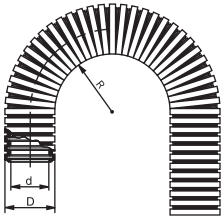
Properties

- Flexible protective conduit, parallel corrugation, special shape for inclusion of an O-ring for high degree of protection in conjunction with Condufix fittings
- Heat stabilized, no flame propagation

Part-No.	Approvals	NW	Capacity N	d mm	D mm	Minimum bending radius (fixed)	Weight kg/100 m	PU M
black								
272160		7	350	6.2	10.0	15	2.1	50
272161	2	10	350	9.6	13.0	19	2.8	50
272162	2	12	350	12.0	15.8	27	3.7	50
272163	2	17	350	16.5	21.2	39	6.2	50
272164	2	23	350	22.3	28.5	46	10.0	50
272165	2	29	350	28.2	34.5	53	13.5	50
272166	2	36	350	36.0	42.5	64	16.5	30
272167	2	48	350	47.1	54.5	73	23.5	30
272168		70	250					
272169		95	250					

Cable conduits and conduit fittings

Cable conduit Condufix OR PA, robot style



Properties

- Flexible protective conduit, parallel corrugation, special shape for inclusion of an O-ring for high degree of protection in conjunction with Condufix fittings
- Heat stabilized
- Free from halogen, phosphorus, cadmium
- Resistant to fuels, mineral oils, greases, alkalies
- Classification according to EN 61386-1/23, 14524066(7)-21-

Technical data

Temperature range	-45 °C to +90 °C temporary 110 °C
Filament control	750 °C IEC 60695
Oxygen index	>24 % EN ISO 4589
Fire performance	HB UL94

Application

- Robotics, light to heavy machine and plant construction
- Machines, apparatuses, devices
- Shipbuilding and railroad construction / rail transportation technology, vehicle manufacturing as well as control cabinets and especially flexible machine parts

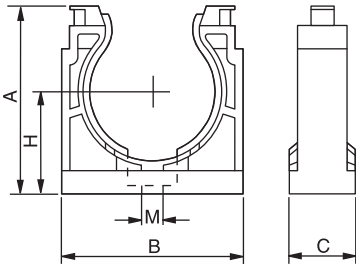
Design

- Polyamid 12, especially modified
- Colour black

Part-No.	NW	d mm	D mm	Minimum bending radius (fixed)	Minimum bending radius (moving)	Weight kg/100 m	PU M
black							
272210	7	6.5	10.0	20	45	2.23	50
272211	10	9.5	13.0	29	59	2.81	50
272212	12	12.0	15.8	32	72	3.79	50
272213	17	16.4	21.2	40	89	6.18	50
272214	23	22.6	28.5	50	116	10.03	50
272215	29	28.1	34.5	68	138	13.52	50
272216	36	36.0	42.5	79	199	16.78	30
272217	48	47.5	54.5	98	228	12.53	30

Cable conduits and cable fittings

Cable conduit-retainer Condufix OH PA



Application

- For fast and secure mounting of Condufix protective conduit

Properties

- The integrated bar fixes the protective conduit axially, thus allowing the protective conduit to rotate within its own axis within the holder
- With collet for cable ties for heavy suspended load
- Impact-resistant, no flame propagation
- Free from halogen, phosphorus, cadmium
- Resistant to against fuels, mineral oils, greases, alkalies

Technical data

Temperature range	-30 °C to +105 °C temporary 150 °C
Filament control	960 °C IEC 60695
Oxygen index	>30 % EN ISO 4589
Fire performance	V2 UL94

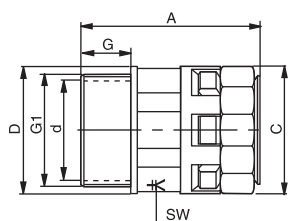
Design

- Polyamid 6, especially modified
- Colour black

Part-No.	NW	A mm	B mm	C mm	H mm	M mm	weight approx. kg/100 piece	PU piece	Cable tie Article number
black									
272240	7	20.0	17.0	20.0	12.0	M 4	0.22	100	680105
272241	10	23.0	21.0	20.0	14.0	M 5	0.28	100	680105
272242	12	26.0	25.0	20.0	15.0	M 5	0.36	100	680105
272243	17	32.0	32.0	20.0	18.0	M 5	0.58	100	680105
272244	23	41.0	40.0	20.0	23.0	M 6	0.94	50	680108
272245	29	47.0	46.0	20.0	26.0	M 6	1.08	30	680108
272246	36	57.0	56.0	20.0	32.0	M 6	1.54	20	680108
272247	48	70.0	70.0	20.0	39.0	M 6	2.10	10	680108

Cable conduits and conduit fittings

Protective conduit fitting Condufix OG PA Straight design



- Heat stabilized
- Free from halogen, phosphorus, cadmium
- Resistant to against fuels, mineral oils, greases, alkalies
- Classification according to EN 61386-1/2, -43-066(7)-31

Technical data

Protection class	IP 66 (Standard) resp. IP 68 (20m water column) in conjunction with an O-ring in the protective conduit profile (insert area last groove) and flat seal at threads
Temperature range	-25 °C to +105 °C
Filament control	960 °C IEC 60695
Oxygen index	>30 % EN ISO 4589
Fire performance	V2 UL94

Application

- Robotics, light to heavy machine and plant construction
- Machines, apparatuses, devices
- Ship and railroad construction / rail transportation technology, vehicle construction as well as control cabinets

Properties

- Fixes the ends of the protective conduit in the entering guides for cables on control cabinets, control units etc. Very fast and simple installation, the protective conduit is simply inserted into the fitting as far as it will go
- The product has no parts that can get lost

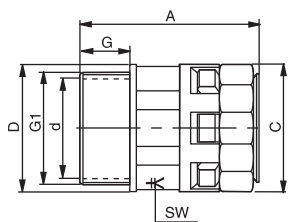
Design

- Polyamid 6, especially modified
- Colour black

Part-No.	Approvals	NW	G1	d mm	A mm	C mm	D mm	SW mm	G mm	weight approx. kg/100 piece	PU piece
metric											
272280		7	M 12x1.5	6.5	35.0	19.0	17.0	15	11	0.46	100
272281	2	10	M 16x1.5	10.0	37.0	21.0	21.0	18	11	0.60	100
272282	2	12	M 16x1.5	10.0	37.0	26.0	25.0	20	11	0.76	100
272283	2	12	M 20x1.5	14.0	37.0	26.0	25.0	20	11	0.78	100
272284	2	17	M 20x1.5	14.5	44.0	31.0	30.0	27	11	1.24	100
272285	2	17	M 25x1.5	18.5	45.0	31.0	34.0	27	12	1.35	100
272286	2	23	M 25x1.5	18.5	48.0	37.0	37.0	34	12	1.75	50
272287	2	23	M 32x1.5	25.5	51.0	37.0	42.0	34	15	1.96	50
272288	2	29	M 32x1.5	25.5	52.0	46.0	46.0	42	15	2.86	30
272289	2	29	M 40x1.5	32.0	56.0	46.0	52.0	42	19	3.24	30
272290	2	36	M 40x1.5	32.0	60.0	54.0	54.0	50	19	4.22	20
272291	2	36	M 50x1.5	42.0	60.0	54.0	62.0	50	19	4.59	20
272292	2	48	M 50x1.5	42.0	61.0	69.0	69.0	66	19	6.69	10
272293	2	48	M 63x1.5	54.0	61.0	69.0	75.0	66	19	7.27	10

Cable conduits and conduit fittings

Protective conduit fitting Condufix OG PA Straight design



- Heat stabilized
- Free from halogen, phosphorus, cadmium
- Resistant to against fuels, mineral oils, greases, alkalies
- Classification according to EN 61386-1/2, -43-066(7)-31

Technical data

Protection class	IP 66 (Standard) resp. IP 68 (20m water column) in conjunction with an O-ring in the protective conduit profile (insert area last groove) and flat seal at threads
Temperature range	-25 °C to +105 °C
Filament control	960 °C IEC 60695
Oxygen index	>30 % EN ISO 4589
Fire performance	V2 UL94

Application

- Robotics, light to heavy machine and plant construction
- Machines, apparatuses, devices
- Ship and railroad construction / rail transportation technology, vehicle construction as well as control cabinets

Properties

- Fixes the ends of the protective conduit in the entering guides for cables on control cabinets, control units etc. Very fast and simple installation, the protective conduit is simply inserted into the fitting as far as it will go
- The product has no parts that can get lost

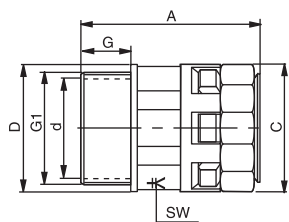
Design

- Polyamid 6, especially modified
- Colour black

Part-No.	Approvals	NW	G1	d mm	A mm	C mm	D mm	SW mm	G mm	weight approx. kg/100 piece	PU piece
PG											
272320		7	PG 7	8.0	35.0	19.0	17.0	15	11	0.47	100
272321	2	10	PG 7	8.0	37.0	21.0	21.0	18	11	0.56	50
272322	2	10	PG 9	10.3	37.0	21.0	21.0	18	11	0.58	100
272323	2	12	PG 9	10.3	37.0	26.0	25.0	20	11	0.75	50
272324	2	12	PG 11	14.0	37.0	26.0	25.0	20	11	0.75	100
272325	2	12	PG 13.5	14.0	37.0	26.0	25.0	20	11	0.81	50
272326	2	17	PG 13.5	14.0	44.0	31.0	28.0	27	11	1.27	100
272327	2	17	PG 16	17.0	44.0	31.0	29.0	27	11.5	1.25	100
272328	2	23	PG 21	22.0	48.0	37.0	36.0	34	12.5	1.79	50
272329	2	29	PG 29	30.0	49.0	46.0	46.0	42	12.5	2.89	30
272330	2	36	PG 36	37.5	55.0	54.0	56.0	50	14	4.29	20
272331	2	48	PG 48	50.0	56.0	69.0	69.0	66	14	6.74	10

Cable conduits and conduit fittings

Protective conduit fitting Condufix OG PM Straight design with metal threads



- Heat stabilized
- Free from halogen, phosphorus, cadmium
- Resistant to against fuels, mineral oils, greases, alkalies
- Classification according to EN 61386-1/23, -43-066(7)-31

Technical data

Protection class	IP 66 (Standard) resp. IP 68 (20m water column) in conjunction with an O-ring in the protective conduit profile (insert area last groove) and flat seal at threads
Temperature range	-25 °C to +105 °C
Filament control	960 °C IEC 60695
Oxygen index	>30 % EN ISO 4589
Fire performance	V2 UL94

Application

- Robotics, light to heavy machine and plant construction
- Machines, apparatuses, devices
- Ship and railroad construction / rail transportation technology, vehicle construction as well as control cabinets

Properties

- Fixes the ends of the protective conduit in the entering guides for cables on control cabinets, control units etc. Very fast and simple installation, the protective conduit is simply inserted into the fitting as far as it will go
- The product has no parts that can get lost

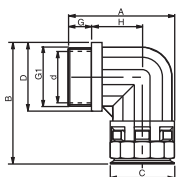
Design

- Polyamid 6, especially modified
- Colour black

Part-No.	Colour	NW	G1	d mm	A mm	C mm	D mm	SW mm	G mm	weight approx. kg/100 piece	PU piece
metric											
272720	black	7	M 12x1.5	6.6	43.0	18.0	20.0	15	10	1.50	50
272721	black	10	M 16x1.5	10.3	43.0	21.0	24.0	18	10	1.98	50
272722	black	12	M 16x1.5	10.3	43.0	25.0	25.0	20	10	2.14	50
272723	black	12	M 20x1.5	14.5	43.0	25.0	29.0	20	10	2.53	50
272724	black	17	M 20x1.5	14.5	47.0	30.0	29.0	27	10	2.88	30
272725	black	17	M 25x1.5	18.8	49.0	30.0	35.0	27	11	3.70	30
272726	black	23	M 25x1.5	18.8	55.0	36.0	35.0	34	11	4.08	30
272727	black	23	M 32x1.5	25.8	57.0	36.0	43.0	34	13	5.30	30
272728	black	29	M 32x1.5	25.8	56.0	44.0	43.0	42	13	6.06	20
272729	black	29	M 40x1.5	32.5	56.0	44.0	54.0	42	13	9.00	20
272730	black	36	M 40x1.5	32.5	61.0	52.0	55.0	50	13	10.33	10
272731	black	36	M 50x1.5	41.1	64.0	52.0	67.0	50	14	13.60	10
272732	black	48	M 50x1.5	42.0	62.0	69.0	67.0	66	14	15.92	10
272733	black	48	M 63x1.5	53.4	62.0	69.0	76.0	66	14	17.18	10

Cable conduits and conduit fittings

Protective conduit fitting Condufix OW PA 90°-angle design



Application

- Robotics, light to heavy machine and plant construction
- Machines, apparatuses, devices
- Ship and railroad construction / rail transportation technology, vehicle construction as well as control cabinets

Properties

- Fixes the ends of the protective conduit in the entering guides for cables on control cabinets, control units etc. Very fast and simple installation, the protective conduit is simply inserted into the fitting as far as it will go
- The product has no parts that can get lost
- Heat stabilized
- Free from halogen, phosphorus, cadmium

- Resistant to against fuels, mineral oils, greases, alkalies
- Classification according to EN 61386-1/2/3, -43-066(7)-31

Technical data

Protection class	IP 66 (Standard) resp. IP 68 (20m water column) in conjunction with an O-ring in the protective conduit profile (insert area last groove) and flat seal at threads
Temperature range	-25 °C to +105 °C
Filament control	960 °C IEC 60695
Oxygen index	>30 % EN ISO 4589
Fire performance	V2 UL94

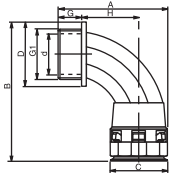
Design

- Polyamid 6, especially modified
- Colour black

Part-No.	NW	G1	d mm	A mm	B mm	C mm	D mm	H mm	G mm	weight approx. kg/100 piece	PU piece
metric											
272370	10	M 16x1.5	10.0	35.0	42.0	21.0	21.0	11.0	11	0.89	50
272371	12	M 16x1.5	10.5	39.0	44.0	25.0	23.0	15.0	11	1.37	50
272372	12	M 20x1.5	12.3	39.0	45.0	25.0	26.0	15.0	11	1.33	50
272373	17	M 20x1.5	14.5	45.0	58.0	30.0	30.0	18.0	11	2.24	50
272374	23	M 25x1.5	18.5	53.0	66.0	36.0	37.0	23.0	12	3.42	30
272375	29	M 32x1.5	25.5	66.0	76.0	45.0	46.0	27.0	15	5.70	20
272376	36	M 40x1.5	32.0	79.0	89.0	54.0	55.0	33.0	19	9.30	10
272377	48	M 50x1.5	42.0	92.0	103.0	68.0	69.0	39.0	19	15.32	10
PG											
272390	10	PG 9	10.3	35.0	42.0	21.0	21.0	11.0	11.5	0.87	50
272391	12	PG 11	14.0	39.0	45.0	25.0	25.0	15.0	11.5	1.22	50
272392	17	PG 13.5	14.0	45.0	56.0	30.0	27.0	18.0	11.5	2.42	50
272393	17	PG 16	17.0	45.0	57.0	30.0	29.0	18.0	11.5	2.21	50
272394	23	PG 21	22.0	53.0	65.0	37.0	36.0	23.0	12.5	3.17	30
272395	29	PG 29	30.0	65.0	76.0	45.0	46.0	28.0	12.5	5.16	20
272396	36	PG 36	37.5	79.0	89.0	54.0	56.0	33.0	14	8.25	10
272397	48	PG 48	50.0	92.0	103.0	68.0	69.0	39.0	14	12.26	10

Cable conduits and conduit fittings

Protective conduit fitting Condufix OB PA 90°-arc angle design



- Resistant to against fuels, mineral oils, greases, alkalis
- Classification according to EN 61386-1/23, -43-066(7)-31

Technical data

Protection class	IP 66 (Standard) resp. IP 68 (20m water column) in conjunction with an O-ring in the protective conduit profile (insert area last groove) and flat seal at threads
Temperature range	-25 °C to +105 °C
Filament control	960 °C IEC 60695
Oxygen index	>30 % EN ISO 4589
Fire performance	V2 UL94

Design

- Polyamid 6, especially modified
- Colour black

Application

- Robotics, light to heavy machine and plant construction
- Machines, apparatuses, devices
- Ship and railroad construction / rail transportation technology, vehicle construction as well as control cabinets

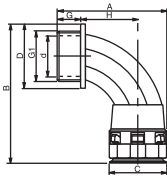
Properties

- Fixes the ends of the protective conduit in the entering guides for cables on control cabinets, control units etc. Very fast and simple installation, the protective conduit is simply inserted into the fitting as far as it will go
- The product has no parts that can get lost
- Heat stabilized
- Free from halogen, phosphorus, cadmium

Part-No.	NW	G1	d mm	A mm	B mm	C mm	D mm	H mm	G mm	weight approx. kg/100 piece	PU piece
metric											
272424	17	M 25x1.5	17.5	52.0	75.0	28.0	34.0	26.0	12	1.88	50
272425	23	M 32x1.5	25.7	69.0	89.0	36.0	40.0	36.0	15	3.25	30
272426	29	M 40x1.5	32.3	81.0	101.0	43.0	50.0	40.0	19	5.14	10
272427	36	M 50x1.5	40.0	98.0	124.0	51.0	60.0	53.0	19	8.53	10
272428	48	M 63x1.5	53.6	106.0	141.0	66.0	75.0	54.0	19	12.86	5
PG											
272444	17	PG 16	14.7	51.0	72.0	28.0	30.0	25.5	11.5	1.74	50
272445	23	PG 21	18.5	65.0	84.0	36.0	36.0	36.0	11	2.99	30
272446	29	PG 29	25.5	75.0	99.0	43.0	46.0	39.5	13	4.76	10
272447	36	PG 36	32.0	92.0	120.0	51.0	56.0	53.5	13	7.88	10
272448	48	PG 48	42.0	102.0	135.0	66.0	69.0	56.0	13	11.96	5

Cable conduits and conduit fittings

Protective conduit fitting Condufix OB PM 90°-arch angle design with metal threads



- Resistant to against fuels, mineral oils, greases, alkalies
- Classification according to EN 61386-1/23, -43-066(7)-31

Technical data

Protection class	IP 66 (Standard) resp. IP 68 (20m water column) in conjunction with an O-ring in the protective conduit profile (insert area last groove) and flat seal at threads
Temperature range	-25 °C to +105 °C
Filament control	960 °C IEC 60695
Oxygen index	>30 % EN ISO 4589
Fire performance	V2 UL94

Application

- Robotics, light to heavy machine and plant construction
- Machines, apparatuses, devices
- Ship and railroad construction / rail transportation technology, vehicle construction as well as control cabinets

Properties

- Fixes the ends of the protective conduit in the entering guides for cables on control cabinets, control units etc. Very fast and simple installation, the protective conduit is simply inserted into the fitting as far as it will go
- The product has no parts that can get lost.
- Heat stabilized
- Free from halogen, phosphorus, cadmium

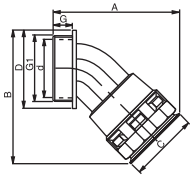
Design

- Polyamid 6, especially modified, thread MS58, nickel plated
- Colour black

Part-No.	NW	G1	d mm	A mm	B mm	C mm	D mm	H mm	G mm	weight approx. kg/100 piece	PU piece
metric											
272824	17	M 25x1.5	16.3	56.0	76.0	28.0	35.0	30.0	11	4.34	50
272825	23	M 32x1.5	23.0	72.0	88.0	36.0	44.0	41.0	13	6.80	30
272826	29	M 40x1.5	30.5	81.0	104.0	43.0	55.0	46.0	13	11.20	10
272827	36	M 50x1.5	37.3	100.0	127.0	51.0	67.0	59.0	14	18.40	10
272828	48	M 63x1.5	52.1	110.0	141.0	66.0	76.0	63.0	14	23.00	5

Cable conduits and conduit fittings

Protective conduit fitting Condufix OA PA 45°-angle design



- Resistant to against fuels, mineral oils, greases, alkalis
- Classification according to EN 61386-1/23, -43-066(7)-31

Technical data

Protection class	IP 66 (Standard) resp. IP 68 (20m water column) in conjunction with an O-ring in the protective conduit profile (insert area last groove) and flat seal at threads
Temperature range	-25 °C to +105 °C
Filament control	960 °C IEC 60695
Oxygen index	>30 % EN ISO 4589
Fire performance	V2 UL94

Design

- Polyamid 6, especially modified
- Colour black

Application

- Robotics, light to heavy machine and plant construction
- Machines, apparatuses, devices
- Ship and railroad construction / rail transportation technology, vehicle construction as well as control cabinets

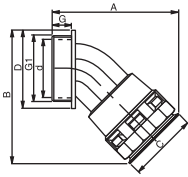
Properties

- Fixes the ends of the protective conduit in the entering guides for cables on control cabinets, control units etc. Very fast and simple installation, the protective conduit is simply inserted into the fitting as far as it will go
- The product has no parts that can get lost.
- Heat stabilized
- Free from halogen, phosphorus, cadmium

Part-No.	NW	G1	d mm	A mm	B mm	C mm	D mm	G mm	weight approx. kg/100 piece	PU piece
metric										
272573	12	M 16x1.5	10.5	50.0	45.0	24.0	23.0	11	0.85	50
272574	17	M 20x1.5	11.5	60.0	56.0	29.0	27.0	11	1.42	50
272575	23	M 25x1.5	18.5	70.0	67.0	37.0	34.0	12	2.14	30
272576	29	M 32x1.5	25.7	80.0	76.0	45.0	41.0	15	3.52	10
272577	36	M 40x1.5	32.0	96.0	90.0	53.0	50.0	19	5.33	10
272578	48	M 50x1.5	42.0	109.0	106.0	67.0	60.0	19	7.98	5

Cable conduits and conduit fittings

Protective conduit fitting Condufix OA PM 45°-angle design with metal threads



- Resistant to against fuels, mineral oils, greases, alkalies
- Classification according to EN 61386-1/23, -43-066(7)-31

Technical data

Protection class	IP 66 (Standard) resp. IP 68 (20m water column) in conjunction with an O-ring in the protective conduit profile (insert area last groove) and flat seal at threads
Temperature range	-25 °C to +105 °C
Filament control	960 °C IEC 60695
Oxygen index	>30 % EN ISO 4589
Fire performance	V2 UL94

Application

- Robotics, light to heavy machine and plant construction
- Machines, apparatuses, devices
- Ship and railroad construction / rail transportation technology, vehicle construction as well as control cabinets

Properties

- Fixes the ends of the protective conduit in the entering guides for cables on control cabinets, control units etc. Very fast and simple installation, the protective conduit is simply inserted into the fitting as far as it will go
- The product has no parts that can get lost.
- Heat stabilized
- Free from halogen, phosphorus, cadmium

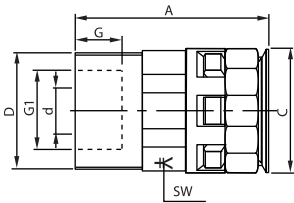
Design

- Polyamid 6, especially modified, thread MS58, nickel plated
- Colour black

Part-No.	NW	G1	d mm	A mm	B mm	C mm	D mm	G mm	weight approx. kg/100 piece	PU piece
metric										
272773	12	M 16x1.5	10.5	53.0	45.0	24.0	24.0	10	2.16	50
272774	17	M 20x1.5	11.5	63.0	57.0	29.0	29.0	10	3.02	50
272775	23	M 25x1.5	18.5	74.0	67.0	37.0	35.0	11	4.44	30
272776	29	M 32x1.5	25.7	82.0	72.0	45.0	43.0	13	6.78	10
272777	36	M 40x1.5	32.0	97.0	93.0	53.0	56.0	13	11.08	10
272778	48	M 50x1.5	42.0	111.0	110.0	67.0	67.0	14	17.56	5

Cable conduits and conduit fittings

Protective conduit fitting Condufix OI PM Straight design with metal thread



- Free from halogen, phosphorus, cadmium
- Resistant to against fuels, mineral oils, greases, alkalis
- Classification according to EN 61386-1/23, -43-066(7)-31

Technical data

Protection class	IP 66 (Standard) resp. IP 68 (20m water column) in conjunction with an O-ring in the protective conduit profile (insert area last groove) and flat seal at threads
Temperature range	-25 °C to +105 °C
Filament control	960 °C IEC 60695
Oxygen index	>30 % EN ISO 4589
Fire performance	V2 UL94

Design

- Polyamid 6, especially modified, thread MS58, nickel plated
- Colour black

Application

- Robotics, light to heavy machine and plant construction
- Machines, apparatuses, devices
- Ship and railroad construction / rail transportation technology, vehicle construction as well as control cabinets

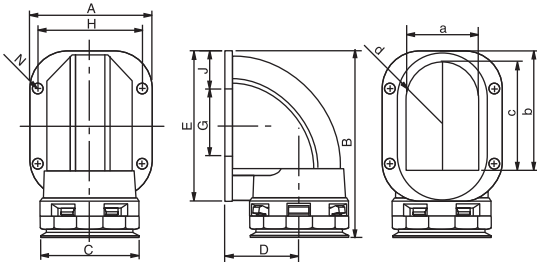
Properties

- Fixes the ends of the protective conduit in the entering guides for cables on control cabinets, control units etc. Very fast and simple installation, the protective conduit is simply inserted into the fitting as far as it will go
- The product has no parts that can get lost.
- Heat stabilized

Part-No.	NW	G1	d mm	A mm	C mm	D mm	SW mm	G mm	weight approx. kg/100 piece	PU piece
metric										
272922	10	M 16x1.5	9.2	41.0	21.0	25.0	18	9	1.52	50
272924	17	M 20x1.5	13.7	46.0	31.0	27.0	27	11.5	2.76	50
272923	12	M 20x1.5	13.7	42.0	25.0	27.0	20	11.5	2.50	50
272921	17	M 25x1.5	16.5	46.0	31.0	33.0	27	11.5	3.50	50
272929	23	M 32x1.5	21.4	56.0	37.0	39.0	34	11.5	5.00	30
272930	29	M 40x1.5	27.3	58.0	46.0	49.0	42	13	8.50	10

Cable conduits and conduit fittings

Protective conduit fitting Condufix OF PA 90°-flange angle design



Application

- Robotics, light to heavy machine and plant construction
- Machines, apparatuses, devices
- Ship and railroad construction / rail transportation technology, vehicle construction as well as control cabinets

Properties

- Fixes the ends of the protective conduit in the entering guides for cables on control cabinets, control units etc. Very fast and simple

- installation, the protective conduit is simply inserted into the fitting as far as it will go
- The product has no parts that can get lost.
- Heat stabilized
- Free from halogen, phosphorus, cadmium
- Resistant to against fuels, mineral oils, greases, alkalies
- Classification according to EN 61386-1/23, -43-066(7)-31

Technical data

Protection class	IP 66 (Standard) resp. IP 68 (20m water column) in conjunction with an O-ring in the protective conduit profile (insert area last groove) and flat seal at threads
Filament control	960 °C IEC 60695
Temperature range	-25 °C to +105 °C
Oxygen index	>30 % EN ISO 4589
Fire performance	V2 UL94

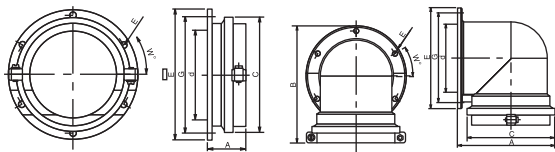
Design

- Polyamid 6, especially modified
- Colour black

Part-No.	NW	A mm	B mm	C mm	D mm	E mm	H mm	G mm	J mm	mm	b mm	c mm	d mm	N mm	weight approx. kg/100 piece	PU piece
flange																
272644	17	44.0	67.0	29.0	24.0	48.4	34.3		24	17.0	33.0	25.0	8.0	5.5	1.82	50
272645	23	53.0	81.0	37.0	42.0	27.0	43.2		21	24.0	42.0	37.0	12.0	5.5	2.76	30
272646	29	60.0	87.0	45.0	32.0	66.0	48.2	24.0	21	30.0	49.0	45.0	15.0	6.5	4.76	10
272647	36	70.0	103.0	53.0	39.0	75.6	57.2	30.0	24	36.5	60.0	54.0	18.0	6.5	6.90	10
272648	48	80.0	107.0	67.0	45.0	81.0	68.2	54.1	12	47.0	61.0	55.0	24.0	6.5	11.10	5

Cable conduits and conduit fittings

Protective conduit fitting Condufix OF PA for NW 70 and NW 95 Straight and 90°-flange angle design



Protection class	IP IP 54
Temperature range	-25 °C to +105 °C
Filament control	960 °C IEC 60695
Oxygen index	>30 % EN ISO 4589
Fire performance	V2 UL94

Design

- Polyamid 6, especially modified
- Colour black

Application

- Robotics, light to heavy machine and plant construction
- Machines, apparatuses, devices
- Ship and railroad construction / rail transportation technology, vehicle construction as well as control cabinets

Properties

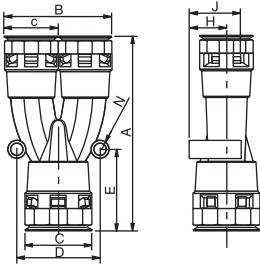
- Screw-type conduit to mount conduit onto cabinets, control devices, etc
- Heat stabilized
- Free from halogen, phosphorus, cadmium
- Resistant to fuels, mineral oils, greases, alkalkies
- Classification according EN 61386-1/23, -43-066(7)-31

Technical data

Part-No.	NW	d mm	A mm	B mm	C mm	E mm	G mm	W °	weight approx. kg/100 piece	PU piece
straight										
272278	70	71.0	42.0		101.0	119	105	30	10.84	5
272279	95	99.0	43.0		130.0	146	132	30	15.54	5
90° flange elbow										
272649	70	71.0	111.0	142.0	101.0	119	105	30	19.50	5
272650	95	99.0	143.0	99.0	130.0	146	132	30	33.50	5

Cable conduits and conduit fittings

Protective conduit splitter Condufix OY PA, Y design



- Particularly rapid and safe assembly: the protective conduit is simply pushed into the conduit splitter as far as it will go. The product has no parts that can get lost.
- Heat stabilized
- Free from halogen, phosphorus, cadmium
- Resistant to against fuels, mineral oils, greases, alkalis
- Classification according to EN 61386-1/23, -43-066(7)-31

Technical data

Protection class	IP 66 (Standard) resp. IP 68 (20m water column) in conjunction with an O-ring in the protective conduit profile (insert area last groove) and flat seal at threads
Temperature range	-25 °C to +105 °C
Filament control	960 °C IEC 60695
Oxygen index	>30 % EN ISO 4589
Fire performance	V2 UL94

Design

- Polyamid 6, especially modified
- Colour black

Application

- Robotics, light to heavy machine and plant construction
- Machines, apparatuses, devices
- Ship and railroad construction / rail transportation technology, vehicle construction as well as control cabinets

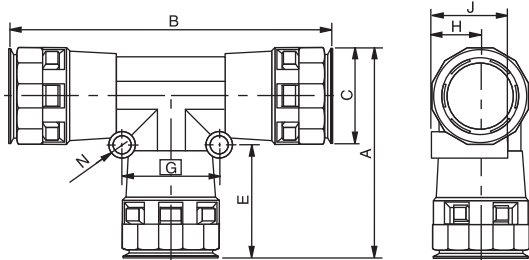
Properties

- To reduce one protective conduit size into two small sizes

Part-No.	NW	A mm	B mm	C mm	c mm	D mm	E mm	N mm	H mm	J mm	weight ap- prox. kg/100 piece	PU piece
272684	171212	89.0	47.0	18.00	14.0	34.0	37	5.0	9.0	24	2.70	20
272685	231717	106.0	58.0	24.00	18.0	45.0	44	6.0	12.0	28	4.38	20
272686	292323	118.0	74.0	30.00	24.0	52.0	45	6.0	15.0	35	6.86	10
272687	362929	141.0	89.0	38.00	30.0	60.0	52	6.0	19.0	41	11.00	5
272688	483636	153.0	106.0	49.00	38.0	76.0	54	7.0	25.0	50	16.76	5

Cable conduits and conduit fittings

Protective conduit splitter Condufix OT PA, T design



- Particularly rapid and safe assembly: the protective conduit is simply pushed into the conduit splitter as far as it will go. The product has no parts that can get lost.
- Heat stabilized
- Free from halogen, phosphorus, cadmium
- Resistant to against fuels, mineral oils, greases, alkalis
- Classification according to EN 61386-1/23, -43-066(7)-31

Technical data

Protection class	IP 66 (Standard) resp. IP 68 (20m water column) in conjunction with an O-ring in the protective conduit profile (insert area last groove) and flat seal at threads
Temperature range	-25 °C to +105 °C
Filament control	960 °C IEC 60695
Oxygen index	>30 % EN ISO 4589
Fire performance	V2 UL94

Application

- Robotics, light to heavy machine and plant construction
- Machines, apparatuses, devices
- Ship and railroad construction / rail transportation technology, vehicle construction as well as control cabinets

Properties

- To split one protective conduit size into two identical sizes

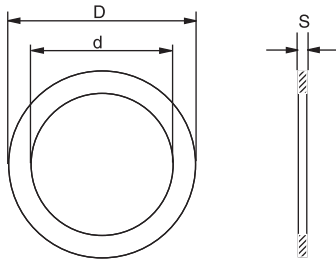
Design

- Polyamid 6, especially modified
- Colour black

Part-No.	NW	A mm	B mm	C mm	E mm	G mm	H mm	J mm	N mm	weight approx. kg/100 piece	PU piece
272661	101010	46.0	72.0	20.00	27	19	10.0	18	5.0	1.44	20
272662	121212	52.0	81.0	23.00	30	20	12.0	20	5.0	2.08	20
272663	171717	63.0	96.0	29.00	35	28	14.0	25	6.0	3.37	20
272664	232323	76.0	117.0	37.00	40	36	18.0	30	6.0	5.20	10
272665	292929	85.0	128.0	45.00	41	41	22.0	36	6.0	8.42	5
272666	363636	97.0	144.0	53.00	46	50	26.0	44	7.0	11.52	5

Cable conduits and conduit fittings

Flat seal for Condufix screw connections, FDNP



Application

- Seals for screw connections with outer thread

Properties

- Asbestos-free
- Resistant to against fuels, mineral oils, greases, alkalies

Technical data

Protection class	IP 68
Temperature range	-40 °C to +200 °C

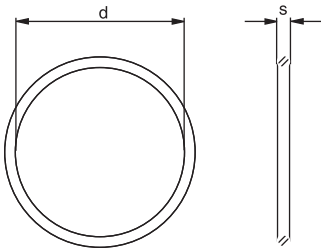
Design

- Aramid fibre composite

Part-No.	Thread	d mm	D mm	S mm	weight approx. kg/100 piece	PU piece
for metric threads						
274500	M 12×1.5	12.0	18.0	1.5	0.03	100
274501	M 16×1.5	16.0	22.0	1.5	0.04	100
274502	M 20×1.5	20.0	27.0	1.5	0.06	100
274503	M 25×1.5	25.0	35.0	1.5	0.13	50
274504	M 32×1.5	32.0	43.0	1.5	0.16	30
274505	M 40×1.5	40.0	55.0	1.5	0.29	20
274506	M 50×1.5	50.0	69.0	1.5	0.33	10
274507	M 63×1.5	63.0	82.0	1.5	0.48	10
for PG- threads						
274510	PG 7	12.4	18.0	1.5	0.04	100
274511	PG 9	15.2	21.0	1.5	0.04	100
274512	PG 11	18.6	26.0	1.5	0.06	100
274513	PG 13.5	20.4	29.0	1.5	0.07	100
274514	PG 16	22.5	33.0	1.5	0.12	100
274515	PG 21	28.3	39.0	1.5	0.12	50
274516	PG 29	37.0	49.0	1.5	0.16	30
274517	PG 36	47.0	59.0	1.5	0.22	20
274518	PG 48	59.3	71.0	1.5	0.26	10

Cable conduits and conduit fittings

O-rings for Condufix cable protective conduits and flange angle, OBNR and WNBR



Application

- Seals for mounting in the last groove of the protective conduit (insertion area) as well as for flange sealing

Properties

- Resistant to mineral oils, greases, water and glycols

Technical data

Protection class	IP 68
Temperature range	-35 °C to +100 °C temporary 130 °C

Design

- NBR 70

Part-No.	NW	d mm	S mm	weight approx. kg/100 piece	PU piece
for cable conduits; OBNR					
274521	10	10.0	1.3	0.01	100
274522	12	11.5	1.5	0.01	100
274524	23	22.0	2.0	0.03	50
274525	29	29.0	2.0	0.04	30
274523	17	16.0	1.8	0.02	100
274520	7	6.4	1.3	0.01	100
274526	36	34.0	2.3	0.06	20
274527	48	44.6	2.4	0.09	10
274528	70	70.0	4.0	0.37	5
274529	95	98.0	4.5	0.65	5
for flange angle; WNBR					
274533	17	32.0	2.5	0.07	50
274534	23	41.0	2.5	0.08	30
274535	29	51.0	2.5	0.10	10
274536	36	60.0	2.5	0.13	10
274537	48	66.0	2.5	0.14	5
274538	70	90.0	2.5	0.18	5
274539	95	117.0	2.5	0.22	5