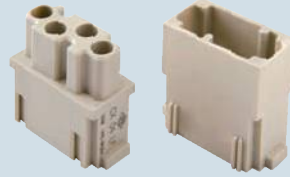


the modular inserts must be installed in suitable frames which are then mounted in traditional housings or COB panel support

frames for modular units page: 194 - 195

modular units,
crimp / solder connections



NEW

crimp / solder coaxial contacts



NEW

description

part No.

part No.

without contacts (to be ordered separately)
- female inserts for female contacts
- male inserts for male contacts

CX 04 LF
CX 04 LM

female coaxial contacts 50Ω
male coaxial contacts 50Ω

CX 50 F
CX 50 M

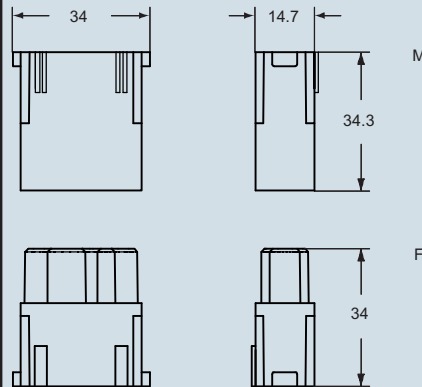
female coaxial contacts 75Ω
male coaxial contacts 75Ω

CX 75 F
CX 75 M

- inserts are made of self-extinguishing thermoplastic resin UL 94 V0
- mechanical life: ≥ 500 cycles
- in accordance with standard DIN 41626-2
- finishing: contact surfaces and body gold plated, back end and ferrule nickel plated
- frequency range: ≤ 2 GHz
- reflection coefficient: ≤ 0.1
- rated voltage: 50V
- rated current: 1.5A
- to crimp contacts CX 50 M/F, CX 75 M/F use tool COPZ (see the crimping tool section on page 490)

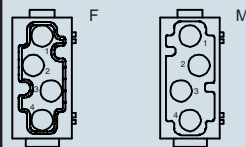
dimensions in mm

CX 04 LF / LM



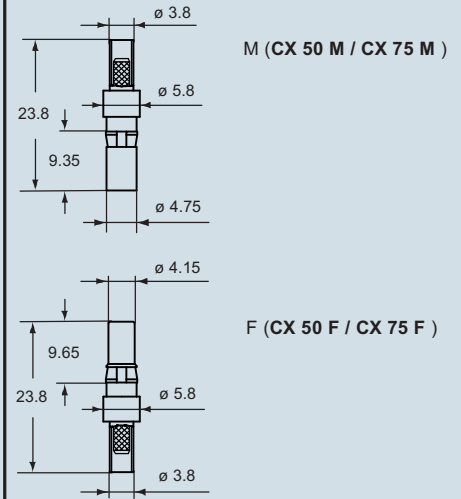
contacts side (front view)

side with reference arrow ▲

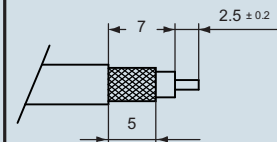


- 1 frame slot

dimensions in mm



conductor stripping



coaxial contacts	for cables	ø external	part No.
50Ω	RG 316/U	2,49 ±0,1	CX 50 F
	RG 174/U	2,79 ±0,127	CX 50 M
	RG 188 A/U	2,79 max	
75Ω	RG 179 B/U	2,54 ±0,127	CX 75 F
	RG 187 A/U	2,79 max	CX 75 M
	TZC 75 101	2,79 max	

dimensions shown are not binding and may be changed without notice