

enclosures:

size "49.16"from page 208
 size "66.16"from page 211
 size "44.27"from page 218
 size "57.27"from page 222
 size "77.27"from page 228
 size "104.27"from page 236

inserts with screw fixing centre distance:

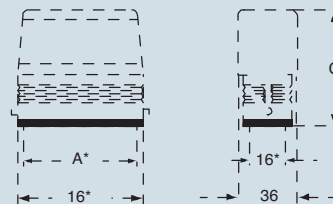
49 x 16 mm (CZAC 15 L enclosures)
 66 x 16 mm (CZAC 25 L enclosures)
 44 x 27 mm (CAC 06 L enclosures)
 57 x 27 mm (CAC 10 enclosures)
 77.5 x 27 mm (CAC 16 enclosures)
 104 x 27 mm (CAC 24 enclosures)

hoods without entry, to be pierced



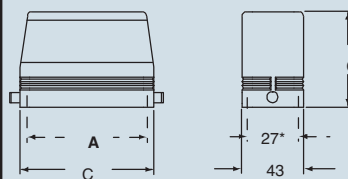
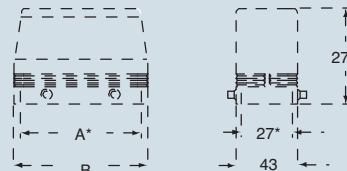
description	part no. with 2 pegs	part no. with 4 pegs
with pegs for levers - used with enclosures size "49.19" - used with enclosures size "66.16" - used with enclosures size "44.27" - used with enclosures size "57.27" - used with enclosures size "77.27" - used with enclosures size "104.27"	CZAC 15 L CZAC 25 L CAC 06 L CAC 10 L CAC 16 L CAC 24 L	CAC 10 CAC 16 CAC 24

dimensions in mm

CZAC L


part	A*	B	C
CZAC 15 L	49,5	63	64,5
CZAC 25 L	66	79,5	70,5

*) screw fixing centre distance

CAC L

CAC


part	A*	B	C
CAC 06 L	44	60	72
CAC 10 - CAC 10 L	57	73	70
CAC 16 - CAC 16 L	77,5	93,5	76
CAC 24 - CAC 24 L	104	120	76

*) screw fixing centre distance

Type
 4/4X/12

dimensions shown are not binding
 and may be changed without notice



inserts:		page
CD	64 poles + ⊕	51
CDD	108 poles + ⊕	64
CQE	46 poles + ⊕	83
CSH	24 poles + ⊕	91
CCE	24 poles + ⊕	100
CNE, CSE, JCNE, JCSE	24 poles + ⊕	101
CSS	24 poles + ⊕	124
CMSE	10+2 (aux) poles + ⊕	139
CMCE	10+2 (aux) poles + ⊕	138
CX	4/8 poles + ⊕	155
MIXO	6 modules	165÷195

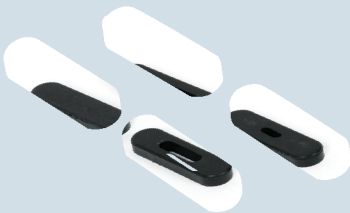
insert centre distance:
104 x 27 mm

hoods for ribbon cable with 4 pegs



NEW

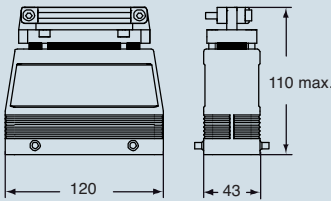
gaskets for ribbon cable hood



NEW

description	part no.	part no.
with pegs, top entry	CAN 24	
ribbon cable seals (supplied separately) - one slot for cable sizes 18.8 x 5.8 mm - one slot for cable sizes 63.8 x 5.1 mm - one slot for cable sizes 36 x 9 mm - not pre-drilled		CRN 1 CRN 2 CRN 3 CRN P

dimensions in mm



dimensions shown are not binding
and may be changed without notice



inserts:	page
CME..... 10+2 (aux) poles + ⊕	139
CME, CMCE..... 16+2 (aux) poles + ⊕137 e 136	

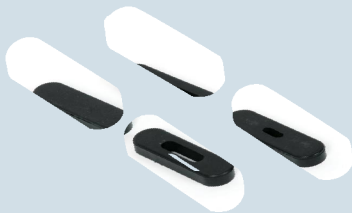
insert centre distance:
104 x 27 mm

hoods for ribbon cable with 4 pegs



NEW

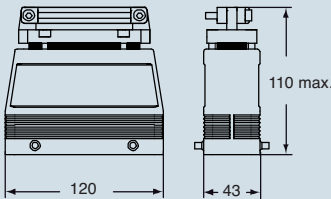
gaskets for ribbon cable hood



NEW

description	part no.	part no.
with pegs, top entry	CMAN 16	
ribbon cable seals (supplied separately) - one slot for cable sizes 18.8 x 5.8 mm - one slot for cable sizes 63.8 x 5.1 mm - one slot for cable sizes 36 x 9 mm - not pre-drilled		CRN 1 CRN 2 CRN 3 CRN P

dimensions in mm



dimensions shown are not binding
and may be changed without notice

enclosures:

size "77.27"

size "104.27"

Note:

cannot be used with T-TYPE series

cable passing hoods
degree of protection IP54



description	part No.	size
with pegs for two levers		
- 3 holes for round cables $\varnothing 5 \div 13.5$ mm	CYR 16.3	77.27
- 4 holes for round cables $\varnothing 5 \div 13.5$ mm	CYR 24.4	104.27

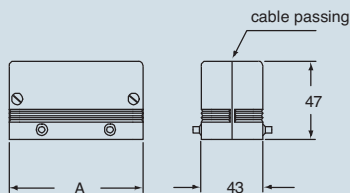
CYR enclosures for round cables

The CYR enclosures are used in installations that require a passage for round cables for data transmission (e.g. computers or PLC) via equipment such as command or control panels, ensuring a good condition of the cable connections.

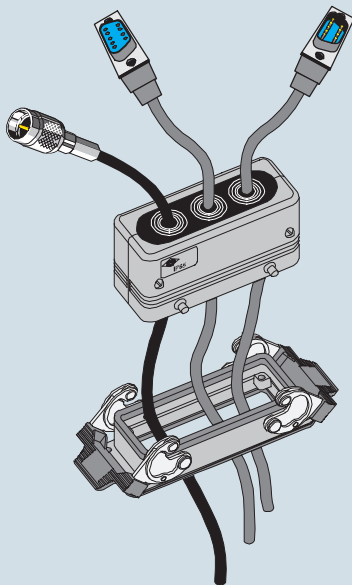
The enclosures are in two parts and have sealing gaskets to preserve the degree of protection of the equipment. The enclosures also contain a rapid cable block device.

The CYR 16.3 and 24.4 can be used with the **bulkhead mounting housings with 2 levers** respectively.

dimensions in mm



part No.	A	grommet entry	nr.	size
CYR 16.3	93.5	$\varnothing 5 / 13.5$	3	77.27
CYR 24.4	120	$\varnothing 5 / 13.5$	4	104.27



dimensions shown are not binding
and may be changed without notice

enclosures:
size "77.27"

Note:
cannot be used with T-TYPE series and IP68 series

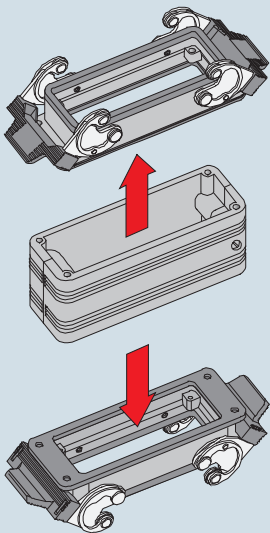
description

without housings (to be ordered separately)
made in two halves

CYG 16 in-line joint

- the joint is made with the CYG 16 enclosure and two bulkhead housings "size 77.27" with one or two levers (to be ordered separately).
- the joint is ideal for use with extension connections and/or as adaptor.
- made in two halves to facilitate conductor cabling.
- two inserts in various combinations may be inserted in the joint (to be ordered separately):

- » female/female inserts (as adaptor joint)
- » male/male inserts (as adaptor joint)
- » female/male inserts (as extension joint)



CU[®] **US** Type
4/4X/12

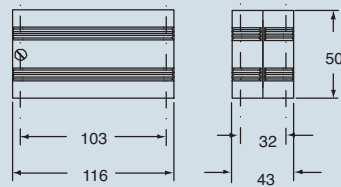
enclosures for in-line joints
degree of protection IP65



part No.

CYG 16

dimensions in mm



dimensions shown are not binding
and may be changed without notice

enclosures:

size "44.27"

size "57.27"

1 branch-off T-BOX coupling

1 branch-off T-BOX coupling
to be fitted on DIN rails

- degree of protection IP65 (according to EN 60529)

description

part No.

part No.

for 2 **C** hoods with lever and gasket "44.27"
size and one housing "44.27" **A** size

CYG 06H06

for 2 **C** hoods with lever and gasket "44.27"
size and one housing "57.27" **A** size

CYG 06H10

for 2 **C** hoods with lever and gasket "44.27"
size and one housing "44.27" **A** size

CYG 06H06D

for 2 **C** hoods with lever and gasket "44.27"
size and one housing "57.27" **A** size

CYG 06H10D

How to use the CYG 06H branch coupling

The cables are branched off by using the CYG 06H coupling in the 1 or 2 branch-off versions. Multi-pole inserts "44.27" size can be fitted inside the two side recesses.

The entire unit can be used with one lever hoods complete with connector inserts.

The front faces can be fitted with "44.27" and/or "57.27" size bulkhead housings.

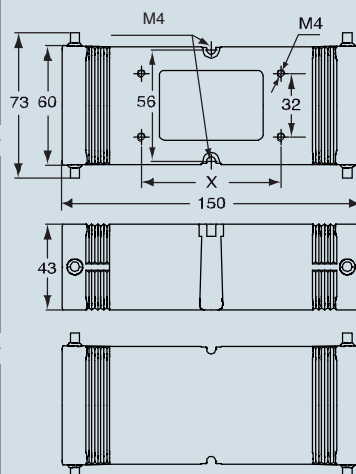
The coupling may also be used as an adapter by using a combination of different insert versions.

The CHC 06 LG cover may be used to close the coupling side faces.

In the branch-offs, the CSS series dual spring terminal inserts allow two wires to be connected without having to fit additional terminals inside the coupling.

dimensions in mm

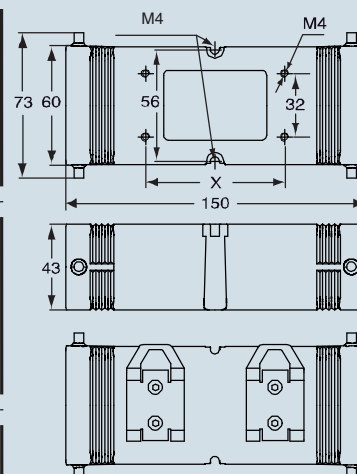
CYG...H06 / H10



part No.	X
CYG 06H06	70
CYG 06H10	83

dimensions in mm

CYG...H06D / H10D



part No.	X
CYG 06H06D	70
CYG 06H10D	83

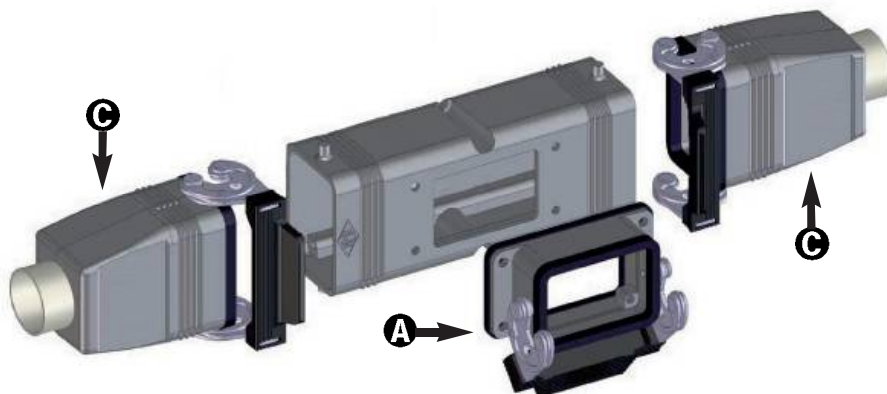
Legend:

- A** bulkhead mounting housings
C hoods with lever and gasket (LG)

part No.	A	C
CYG 06H06	06	06
CYG 06H10	10	06
CYG 06H06D	06	06
CYG 06H10D	10	06

CAL® **US** Type
4/4X/12

dimensions shown are not binding
and may be changed without notice

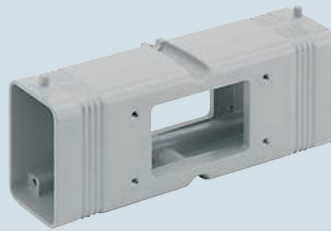


enclosures:

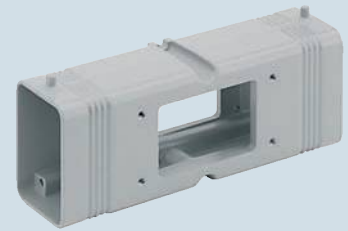
size "44.27"

size "57.27"

2 branch-off T-BOX coupling



2 branch-off T-BOX coupling



- degree of protection IP65 (according to EN 60529)

description	part No.	part No.
for 2 "44.27" size hoods with lever and gasket and 1 "44.27" B size fixing side housing and one "57.27" A size housing	CYG 06H0610	
for 2 "44.27" size hoods with lever and gasket and 1 "57.27" B size fixing side housing and one "44.27" A size enclosure	CYG 06H1006	
for 2 "44.27" size hoods with lever and gasket and two "44.27" A and B size housing		CYG 06H0606
for 2 "44.27" size hoods with lever and gasket and two "57.27" A and B size housing		CYG 06H1010

How to use the CYG 06H branch coupling

The cables are branched off by using the CYG 06H coupling in the 1 or 2 branch-off versions. Multi-pole inserts "44.27" size can be fitted inside the two side recesses.

The entire unit can be used with one lever hoods complete with connector inserts.

The front faces can be fitted with "44.27" and/or "57.27" size bulkhead housings.

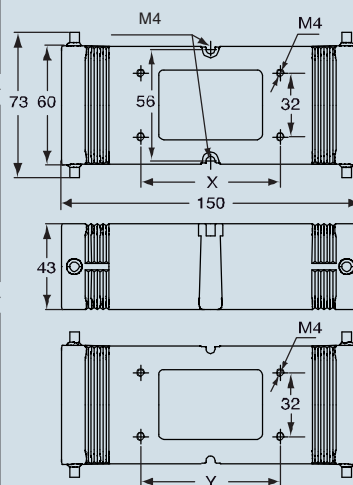
The coupling may also be used as an adapter by using a combination of different insert versions.

The CHC 06 LG cover may be used to close the coupling side faces.

In the branch-offs, the CSS series dual spring terminal inserts allow two wires to be connected without having to fit additional terminals inside the coupling.

dimensions in mm

CYG...H0610 / H1006 and CYG...H0606 / H1010



part No.	X	Y
CYG 06H0610	83	70
CYG 06H1006	70	83
CYG 06H0606	70	70
CYG 06H1010	83	83

Legend:

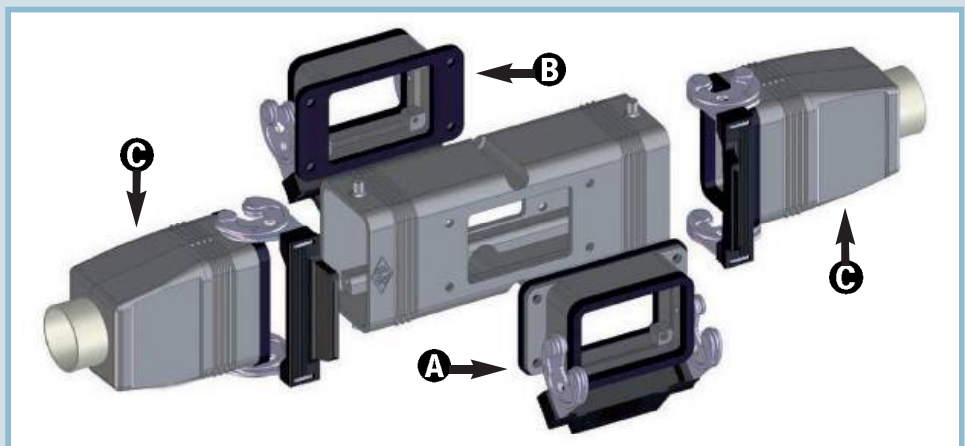
A bulkhead mounting housings

B bulkhead mounting housings

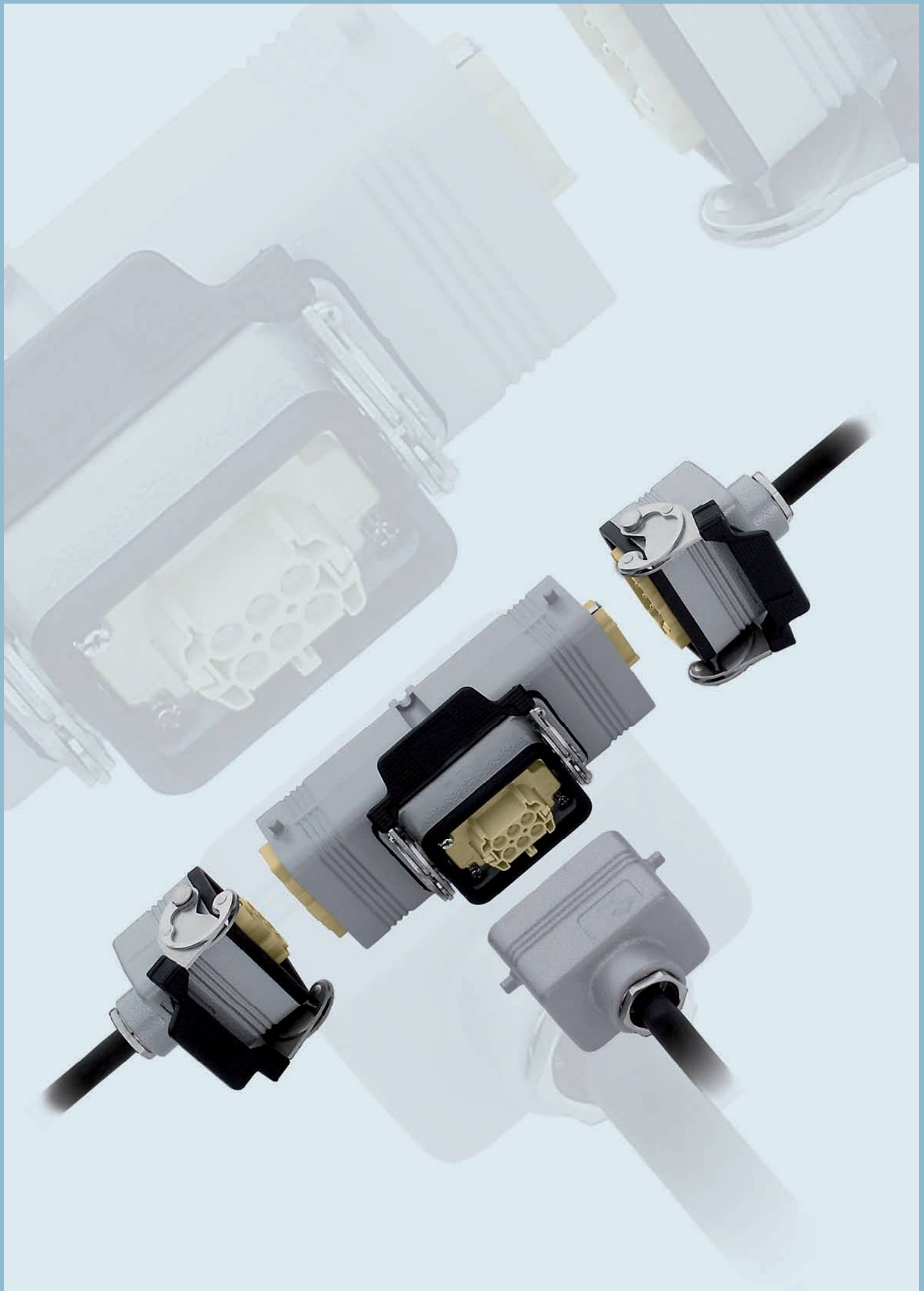
C hoods with lever and gasket (LG)

part No.	A	B	C
CYG 06H0610	06	10	06
CYG 06H1006	10	06	06
CYG 06H0606	06	06	06
CYG 06H1010	10	10	06

CALUS Type 4/4X/12



dimensions shown are not binding
and may be changed without notice



panel fitted insert fastening screws



screws for second earth terminal



description	part No.	part No.
-------------	----------	----------

to be fitted instead of the current insert fastening screws

CRIC M3 *

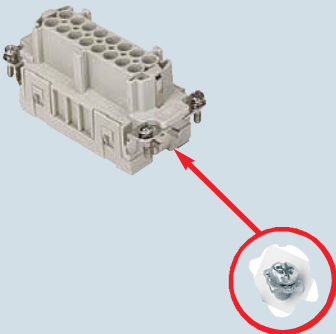
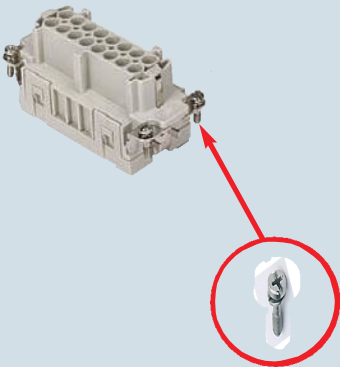
- for CDA/CDC inserts
- for CD 15/25, CDD 38 inserts
- for CD 40/64, CDD 24/42/72/108, CQE, CNE, CSS, CX 8/24, CCE, CSE, CMSE, CME, CMCE, CSH inserts
- for CP, CX 12/2, CX 6/36, CX 4/0, CX 4/2 inserts

CR VATG
CR VDTG
CR VNTG

CR VPTG

* The approved method of mounting inserts is by fixing the four screws in an ILME enclosure or housing.

ILME will not be responsible for any different mounting applications. It is the responsibility of the installer to ensure the correct coupling and earth contact of the inserts.



dimensions shown are not binding
and may be changed without notice

support for rail mounting DIN EN 60715



CT/CTS/CTE/CTSE inserts coupling screws cable-clamping plates



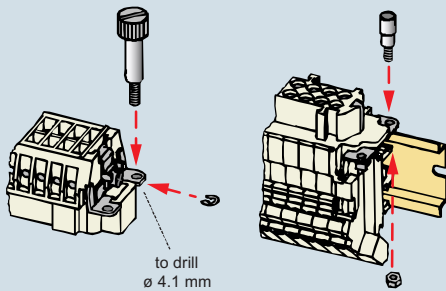
description	part No.	part No.
supports for CT, CTS, CTE, CTSE inserts	CT APE	
bush for CT, CTS, CTE, CTSE inserts		CRBF
screw pin for CD, CNE, CCE, CSE, CSH inserts		CRBM
straight cable clamping plate		CRAD
angled cable clamping plate		CRAS

Coupling screws for CT/CTE inserts

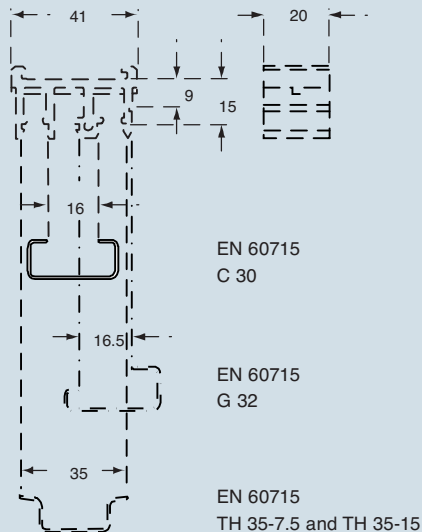
The use of CRBF (female) and CRBM (male) coupling screws is recommended to guarantee a stable and safe coupling between inserts (without enclosures) with terminal blocks and inserts without terminal blocks.

CRBM

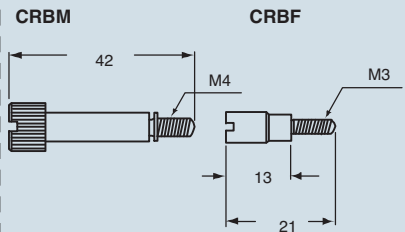
CRBF



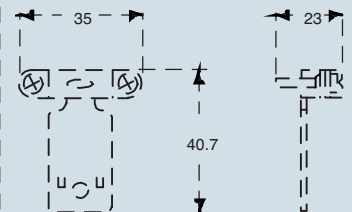
dimensions in mm



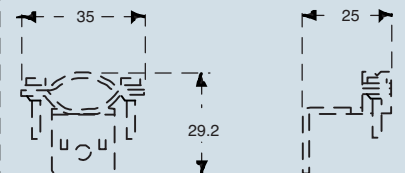
dimensions in mm



CRAD



CRAS



Note:

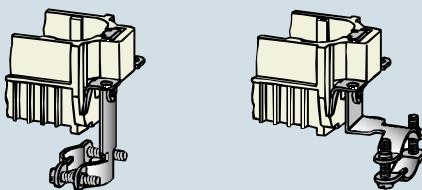
for conductor groups or cable with \varnothing min = 12 mm and \varnothing max = 23 mm

Use of cable-clamping plates

In accordance with the recommendations of standard IEC 60352-2, the weight of the conductor groups or multipolar cables must not cause any stress on the contacts inside the inserts. It is therefore advisable to use cable-clamping plates in those inserts without enclosures

CRAD

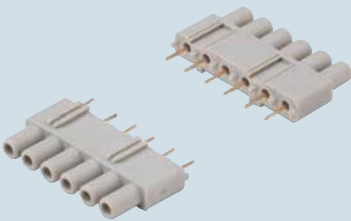
CRAS



dimensions shown are not binding
and may be changed without notice

inserts:	page:
CDD 24 poles + ⊕	59
CDD 42 poles + ⊕	61
CDD 72 poles + ⊕	62
CDD 108 poles + ⊕	64
CX 8/24 poles + ⊕	151
CX 6/36 poles + ⊕	152
CX 12 (MIXO) 12 poles	177

interface
for printed circuit



6A contacts for interface
silver and gold plated



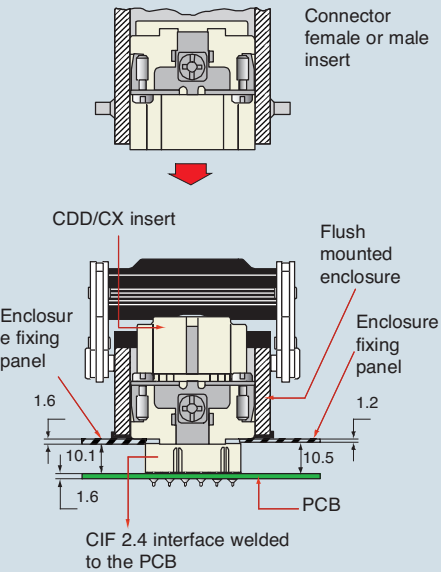
description	part No.	part No.	part No.
interface module with 6 female contacts (gold) - for up to 2.4mm thick PCB interface module with 6 female contacts (silver) - for up to 2.4mm thick PCB	CIF 2.4 CIF 2.4 A		
6A female contacts for female inserts with terminal Ø 1 mm		CDFA 6A	CDFD 6A
6A male contacts for male inserts with terminal Ø 1 mm		CDMA 6A	CDMD 6A

CIF interface

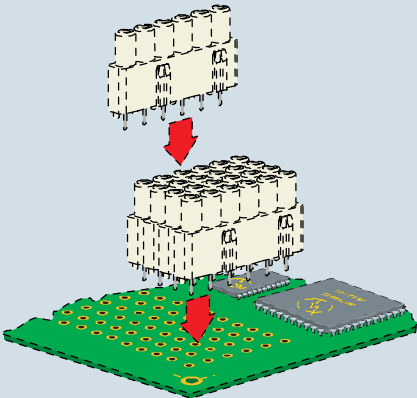
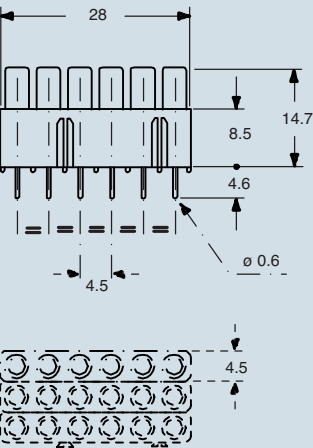
The interface block is made according to the multipole connector used by assembling a suitable number of CIF modules (see table).

inserts	poles	modules "CIF"
serie	n°	n°
CDD	24	4
CDD	42	7
CDD	72	12
CDD	108	18
CX	8/24	4
CX	6/36	6
CX (MIXO)	12	2

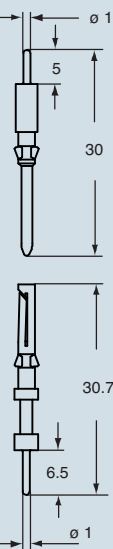
The block is then welded on the printed circuit on which the multipole connector (female or male) equipped with coupling contacts will then be inserted.



dimensions in mm



dimensions in mm



dimensions shown are not binding
and may be changed without notice



inserts		page
CDC	10, 16 poles + ⊕	73÷75
CQ	5 poles + ⊕	69
CQE ..	10, 18, 32, 46, 64,92 poles + ⊕	81÷85
CCE....	6, 10, 16, 24, 32, 48 poles + ⊕	94÷104
CMCE	3+2, 6+2, 10+2, 16+2, 12+4, 20+4, 32+4 poles + ⊕	134÷146
CX.....	8/24 poles + ⊕	151
MIXO	(16A)	172÷176

constantan (Cu Ni)
crimp contacts



iron (Fe)
crimp contacts



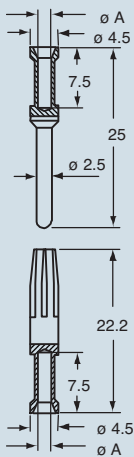
description	part No.	part No.
16A, 0.5 mm², AWG 20 female contacts	CCFC 0.5	CCFF 0.5
16A, 0.5 mm², AWG 20 male contacts	CCMC 0.5	CCMF 0.5

Note:
A mixed combination of standard iron, Constantan and silver and gold plated contacts can be fitted in the same insert.

- for crimp contacts, see the crimp tool section (16A, CCF and CCM series contacts) pages 466, 470, 480, 482, 484, 486
- for thermocouples compliant with DIN IEC 584 type J
- contact resistance ≤ 1 Ohm

dimensions in mm

CCF and CCM

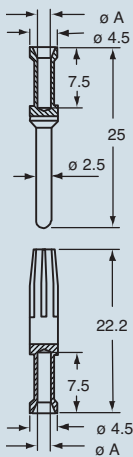


CCF and CCM contacts

conductor section mm²	conductor slot ø A (mm)	conductors stripping length (mm)
0.5	1.1	7.5

dimensions in mm

CCF and CCM



CCF and CCM contacts

conductor section mm²	conductor slot ø A (mm)	conductors stripping length (mm)
0.5	1.1	7.5

dimensions shown are not binding
and may be changed without notice

enclosures:

MIXO seriesfrom page 160

**CX 01 YF/YM/YPEF/YPEM, CX 02 GF/M,
CX 02 HF/M:**

only with CR 24 ATD

N.B.:

size 44.27 and 57.27 cannot be used with T-TYPE series

**ground terminals for shielded cables
(for MIXO series)
clamps for cables Ø 5 mm and Ø 10 mm**



**anchorage for several earth connections
cables (for MIXO series)**



description

part No.

part No.

in zinc iron, to be mounted on MIXO frames
in bulkhead mounting housings and high construction hoods
- enclosures "44.27" and MIXO frames for 2 inserts
- enclosures "57.27" and MIXO frames for 3 inserts
- enclosures "77.27", "77.62" and MIXO frames for 4 inserts
- enclosures "104.27", "104.62" and MIXO frames for 6 inserts

**CR 06 ST
CR 10 ST
CR 16 ST
CR 24 ST**

to be mounted on CR..ST ground terminals
clamp for shielding cables Ø 5 mm
clamp for shielding cables Ø 10 mm

**CR 05 CA
CR 10 CA**

in zinc iron, to be mounted on MIXO frames
in bulkhead mounting housings and high construction hoods
- enclosures "44.27" and MIXO frames for 2 inserts
- enclosures "57.27" and MIXO frames for 3 inserts
- enclosures "77.27", "77.62" and MIXO frames for 4 inserts
- enclosures "104.27", "104.62" and MIXO frames for 6 inserts
- enclosures "104.27", "104.62" and MIXO frames for 6 inserts

**CR 06 AT
CR 10 AT
CR 16 AT
CR 24 AT
CR 24 ATD**

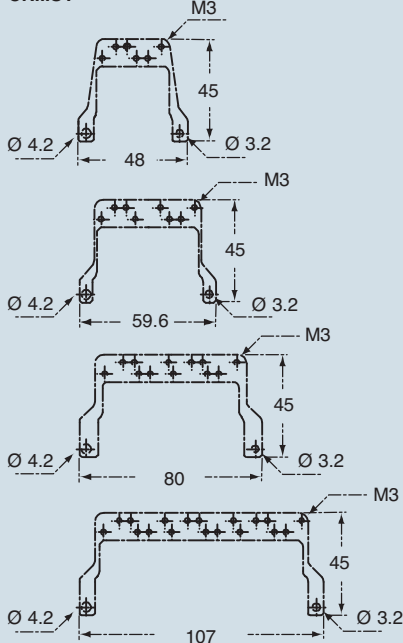
Anchorage CR .. ST are designed for installation on the frames of the MIXO modular connectors, for earth connecting the screening braid of shielded cables.

With the CR..ST anchorages we advise you to use high construction hoods top entry.

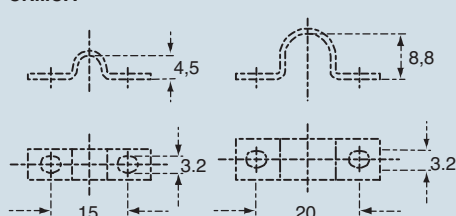
Anchorage CR .. AT / ATD are designed for installation on the frames of the MIXO modular connectors for earth connecting several cables.

dimensions in mm

CR...ST

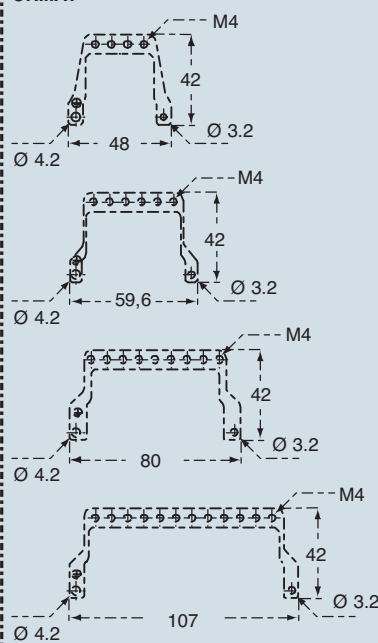


CR...CA

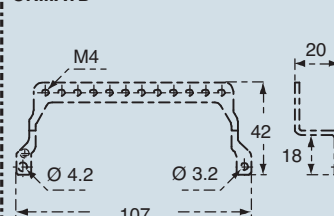


dimensions in mm

CR...AT



CR...ATD



dimensions shown are not binding
and may be changed without notice

inserts:	page
CD 40, 64 poles + ⊕	49-51
CDD 24, 42, 72, 108 poles + ⊕	59-64
CQE 10, 18, 32, 46 poles + ⊕	80-83
CSH 6, 10, 16, 24 poles + ⊕	88-91
CCE 6, 10, 16, 24 poles + ⊕	94-100
CNE, CSE .. 6, 10, 16, 24 poles + ⊕	95-101
CSS 6, 10, 16, 24 poles + ⊕	118-121
CP 6 poles + ⊕	149
CX 8/24, 6/36, 12/2 poles + ⊕	151-153

screw fixing centre distance:
44 x 27 mm, 57 x 27 mm,
77.5 x 27 mm, 104 x 27 mm

N.B.:
 size 44.27 and 57.27 cannot be used with
 T-TYPE series

**ground terminals for shielded cables and for several earth connections clamps
 for cables Ø 5 mm and Ø 10 mm**



description

part No.

in zinc plated iron, to be fitted on connectors in bulkhead
 housings, high hoods and COB series enclosures
 - "44.27" enclosures and inserts
 - "57.27" enclosures and inserts *
 - "77.27", "77.62" enclosures and inserts
 - "104.27", "104.62" enclosures and inserts
 - CSS "104.27" enclosures and inserts **

CR 06 SC
CR 10 SC
CR 16 SC
CR 24 SC
CR 24 SCA

to be fitted on CR..SC anchors
 U-bolt for Ø 5 mm cable screening
 U bolt for Ø 10 mm cable screening

CR 05 CA
CR 10 CA

* the high construction hoods with side entry cannot
 be used

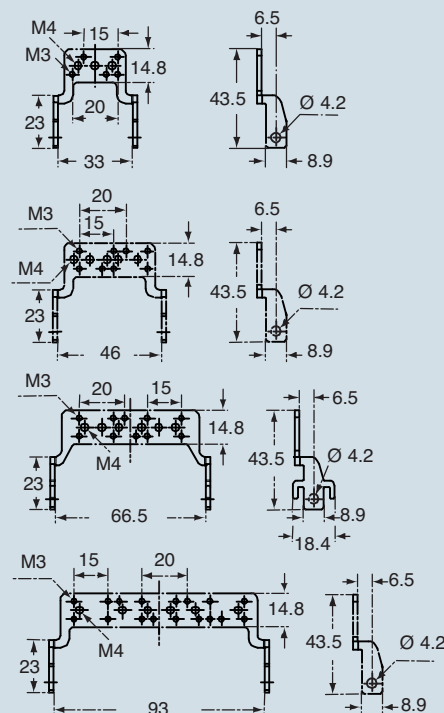
** can be used only in bulkhead housings

The CR... SC anchors are fitted on connectors for
 connecting to earth multiple cables and screened
 cables braids

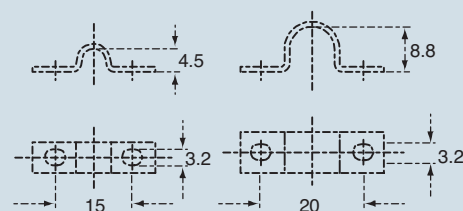
With the CR..SC anchorages, we advise you to use
 high construction hoods top entry.

dimensions in mm

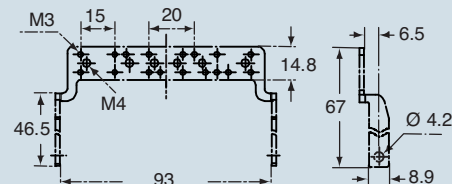
CR...SC



CR...CA



CR SCA



dimensions shown are not binding
 and may be changed without notice

The CR..FS series anchorages are employed for use of connector inner fittings (normal or MIXO modular) without enclosures and enable securing cables with clamps to prevent transmitting friction forces to contacts. CR..SS anchorages (with grip to facilitate detachment) are used for earth connecting several conductors and/or of the screen of shielded cables

* except CT, CTS, CTE and CTSE

grip panels for cables outside enclosure equipped with fixing screws and rings



supports, screws and clamps for grip panels of cables outside enclosure

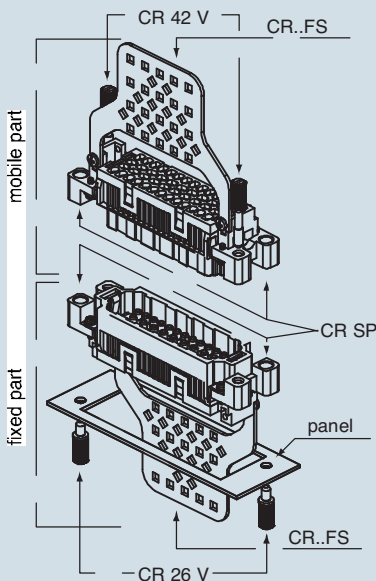


description	part No.	part No.
in zinc iron, to be mounted on: - inserts size "44.27" * and MIXO frames for 2 inserts - inserts size "57.27" * and MIXO frames for 3 inserts - inserts size "77.27" * and MIXO frames for 4 inserts - inserts size "104.27" * and MIXO frames for 6 inserts	CR 06 FS CR 10 FS CR 16 FS CR 24 FS	
for shielded cables, to be mounted on: - inserts size "77.27" * and MIXO frames for 4 inserts - inserts size "104.27" * and MIXO frames for 6 inserts	CR 16 SS CR 24 SS	
supports in die-cast zinc N° 2 pieces equipped with fixing screws and rings for earth connecting		CR SP
short screws in zinc iron, N° 2 pieces long screws in zinc iron, N° 2 pieces		CR 26 V CR 42 V
to be mounted on CR..SS anchorage clamp for shielding cables Ø 5 mm clamp for shielding cables Ø 10 mm		CR 05 CA CR 10 CA

In the fixed part, a pair of CR SP supports is fitted on the connector, using its securing screws. A CR..FS or CR..SS anchorage is fitted on the supports, using the supplied securing screws and washers. All parts are secured on the rear panel with the pair of CR 26 V viton screws.

In the mobile part too, a pair of CR SP supports are fitted on the connector and a CR..FS or CR..SS anchorage is secured on it. The pair of CR 42 V screws fasten the mobile part to the fixed part.

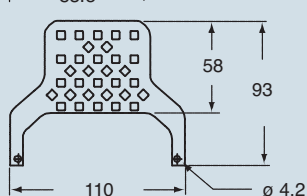
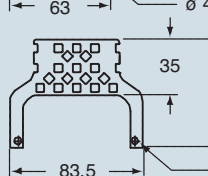
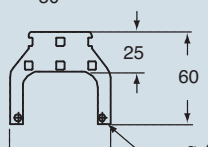
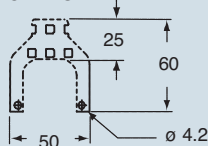
Note: By unscrewing the CR 26 V panel screws, the whole assembly (mobile part + fixed part) can be removed from the panel for inspection.



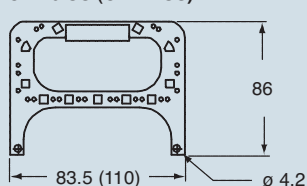
dimensions shown are not binding and may be changed without notice

dimensions in mm

CR...FS

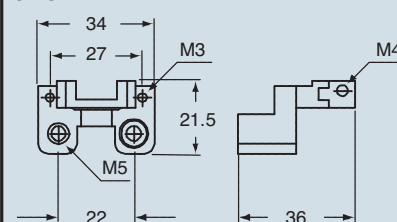


CR 16 SS (CR 24 SS)

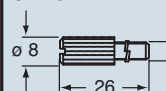


dimensions in mm

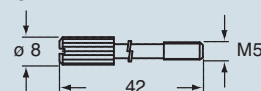
CR SP



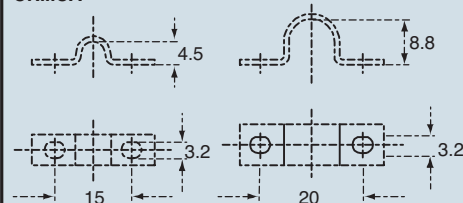
CR 26 V



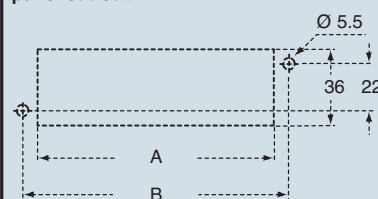
CR 42 V



CR...CA



panel cut-out



poles	06	10	16	24
A	52	65	85.5	112
B	65	78	98.5	125

Technical specifications

- materials
 - floating frame, inserts: stainless steel
 - fixing screws: zinc-plated steel
- mechanical endurance: ≥ 500 cycles
- compensation range
 - axis x: ± 1.5 mm
 - axis y: ± 1.5 mm

Note:

- As the frames are floating, the PE earthing connection of the metal surfaces on which they are mounted (mounting bases) must be performed separately and cannot be done by connecting the PE earthing contact to the corresponding connector inserts.
- The supply includes 1 frame and 4 shoulder screws with cylindrical head and notch to fix the frame in place

NEW

description

part No.

in stainless steel, to be mounted on:

- inserts size "44.27" * and MIXO frames for 2 inserts
- inserts size "57.27" * and MIXO frames for 3 inserts
- inserts size "77.27" * and MIXO frames for 4 inserts
- inserts size "104.27" * and MIXO frames for 6 inserts

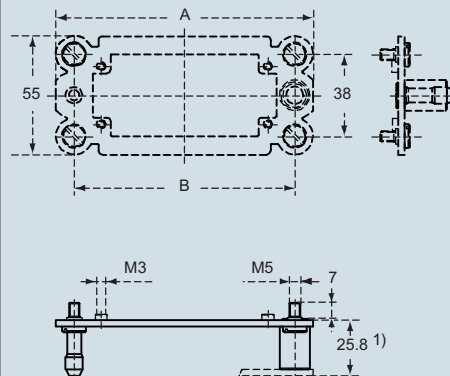
CR 06 DF
CR 10 DF
CR 16 DF
CR 24 DF

* except CT, CTS, CTE and CTSE

Characteristics

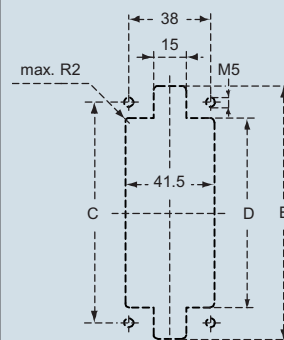
- Suitable, depending on size, for all MIXO connector inserts and frames, except series CT, CTS, CTE and CTSE
- Designed to be used in the transportation, printing and power electronic industries (for example boxes for rack cabinets) and in all industrial applications that require, during assembly or maintenance, the connection of connectors without possibility of controlling the alignment
- Enables the **self-centring coupling of two corresponding** connectors without the use of enclosures; they freely move on their base plate (± 1.5 mm on both axes) ensuring the **alignment of the coupling**.

dimensions in mm



1) distance for electric and fibre optic contacts: max 27 mm
distance for pneumatic contacts: max 26.5 mm

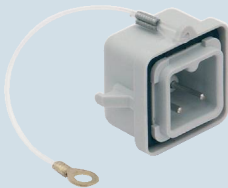
panel cut-out in mm



part No.	A	B	C	D	E
CR 06 DF	86	69	69	54.5	84
CR 10 DF	99	82	82	67.5	97
CR 16 DF	119.5	102.5	102.5	88	117.5
CR 24 DF	146	129	129	114.5	144

dimensions shown are not binding
and may be changed without notice

terminal connector
for CKF 03 inserts



description

part No.

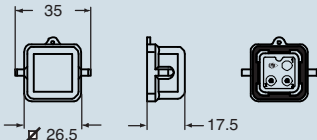
with pegs and seal, connects pole 2 with pole 3
with pegs and seal, connects pole 1 with pole 2

CKM 03 T1
CKM 03 T3

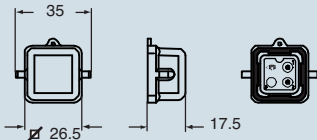
When the terminal connector is mated with a CKF/CKSF 03 insert (complete with an enclosure with lever), it performs a dual function:
- connects two socket insert poles
- acts as a cover (IP65 protection rating compliant with EN 60529 standard, with lever closed).

dimensions in mm

CKM 03 T1



CKM 03 T3

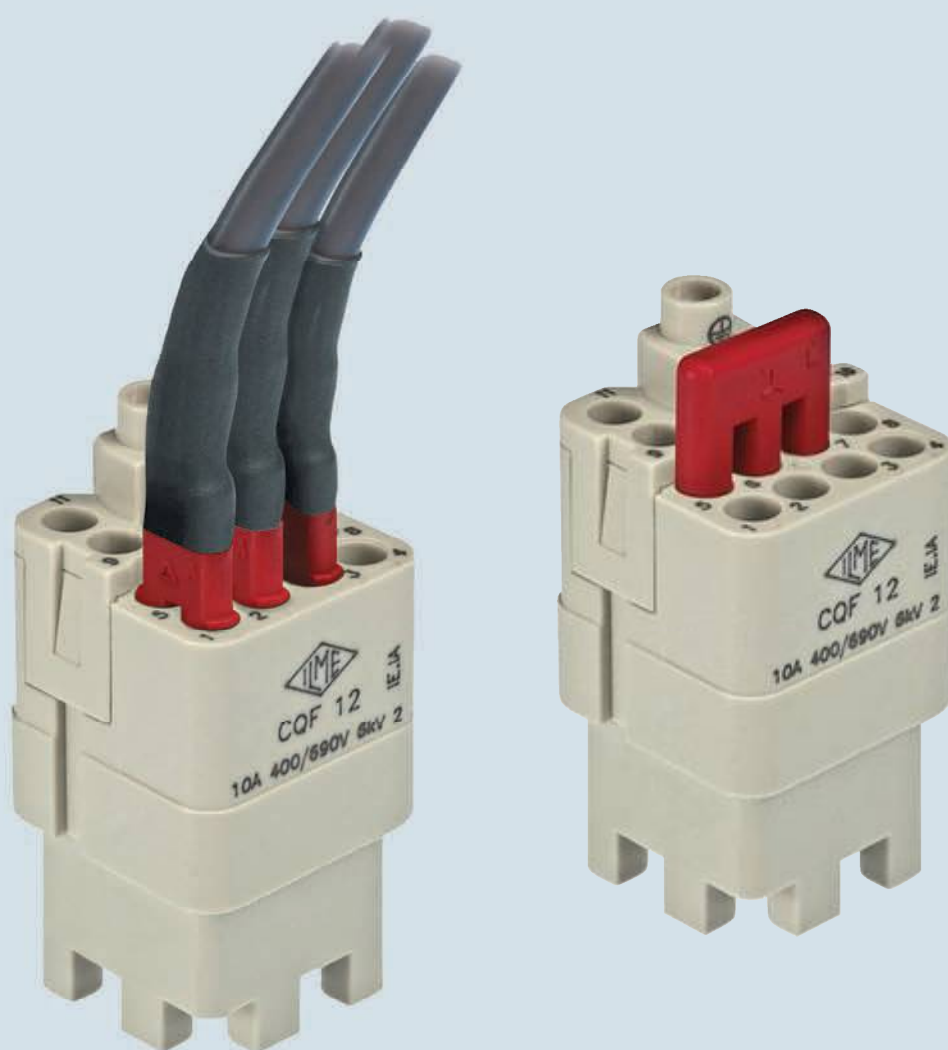


● interconnected male contacts

dimensions shown are not binding
and may be changed without notice

Bridges

for delta or star connection



CR bridges for delta or star connection



inserts:

CQF 12 poles + ⊕
CDDF 24, 42, 72 (144), 108 (216) poles + ⊕

bridges for star connection



NEW

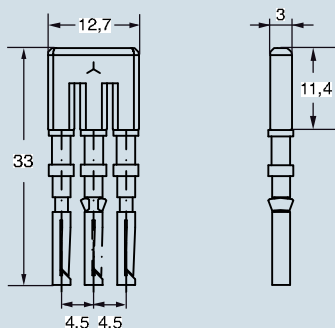
description

Part No.

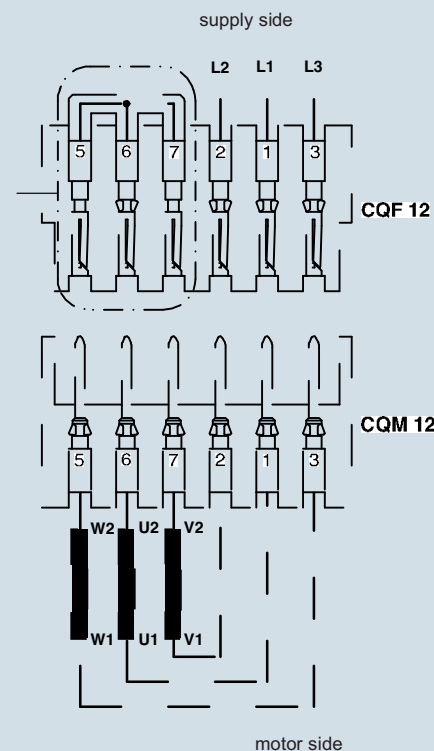
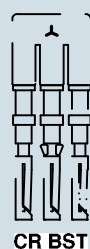
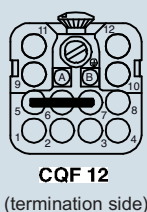
bridge with 3 female 10A contacts, silver plated

CR BST

dimensions in mm



Example of STAR connection using inserts CQ 12



5-6-7	BRIDGE W2-U2-V2
1	L1
2	L2
3	L3
4	auxiliary circuit
8	auxiliary circuit
9	auxiliary circuit
10	auxiliary circuit
11	auxiliary circuit
12	auxiliary circuit
⊕	protective earth

dimensions shown are not binding
and may be changed without notice

accessories



insert joining block



metal replacement handles



description

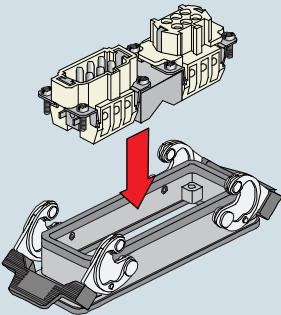
made of die cast aluminium alloy
to mate two inserts (see below)

to replace thermoplastic handles
2 component kit for dual lever enclosures ¹⁾

¹⁾ can only be used on dual lever enclosures sizes
57.27, 77.27 and 104.27

CBGF combination block

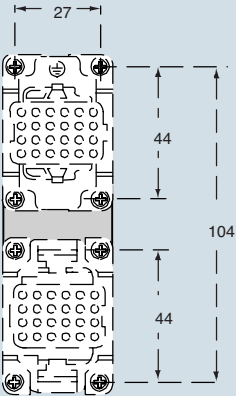
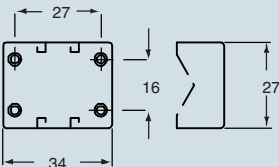
- Allows two "44.27 size" inserts to be inserted in
"104.27 size" enclosures and on the following COB
series items:
COB TCQ, COB 24 BC, COB TSF, COB TSFS,
COB 24 CMS
- Allows female contacts and male contacts in the
same enclosure or mounting
- Allows mixed type contacts in the same enclosure or
mounting (for example, 6 poles 16A CNEF + 24
poles 10A CDDF)



part No.

CBGF

dimensions in mm



enclosures :

size "104.27" from page 236

panel supports:

COB page 410 - 411

inserts with screw fixing centre distance:

(2x) 44 x 27 mm

part No.

CR TM-1

C-TYPE enclosures
(with two levers only):

size "57.27" from page 222

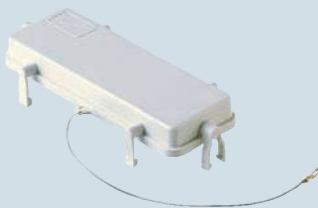
size "77.27" from page 228

size "104.27" from page 236

dimensions shown are not binding
and may be changed without notice

enclosures:
size “104.27” from page 236

temporary protection cover
for transportation



pliers for uncoupling connectors



description

part No.

part No.

for housings and hoods
- with 1 or 2 levers, with 2 or 4 pegs

CPT 24 *

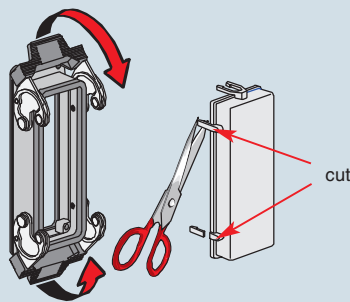
for housings and hoods
- with 2 levers and 4 pegs

CPES

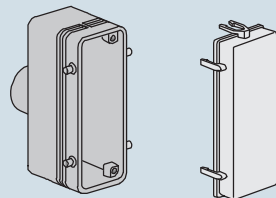
* Cannot be used with T-TYPE series

use

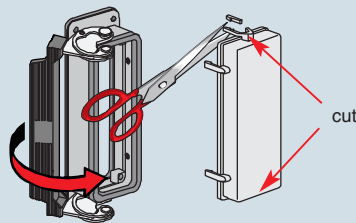
CPT 24 for enclosures with 2 levers



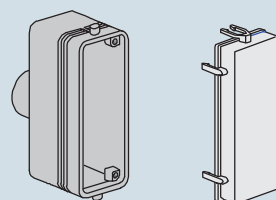
CPT 24 for enclosures with 4 pegs



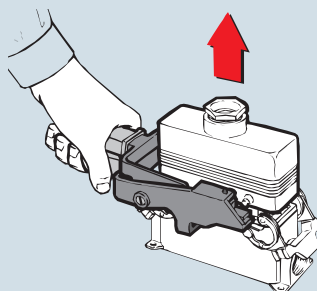
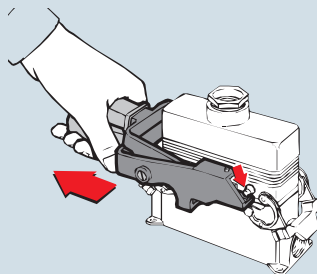
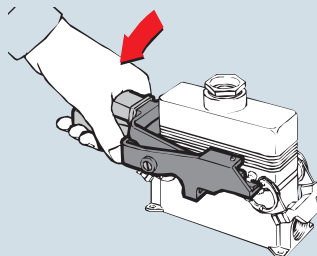
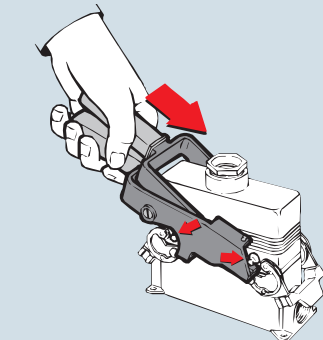
CPT 24 for enclosures with 1 lever



CPT 24 for enclosures with 2 pegs



use



enclosures:

- size "49.16" from page 208
- size "66.16" from page 211
- size "44.27" from page 218
- size "57.27" from page 222
- size "77.27" from page 228

Use M3 passing screws tightened with nut and washer (not included).
Verify connection continuity of coupled connectors

plates for D-SUB inserts (IEC 60807-2)
CZ / MZ / MZF enclosures



plates for D-SUB inserts (IEC 60807-2)
CH / CA and MH / MA / MF enclosures



description	part No.	for enclosures size	part No.	for enclosures size
for 1 D-SUB insert 9 poles (not included)	CR 09 AD	"49.16"	CR 09 AD1	"44.27"
for 1 D-SUB insert 15 poles (not included)	CR 15 AD	"49.16"	CR 15 AD1	"44.27"
for 1 D-SUB insert 25 poles (not included)	CR 25 AD	"49.16"	CR 25 AD1	"57.27"
for 1 D-SUB insert 37 poles (not included)	CR 37 AD	"66.16"	CR 37 AD1	"77.27"
for 1 D-SUB insert 50 poles (not included)	CR 50 AD	"66.16"	CR 50 AD1	"77.27"
for 2 D-SUB inserts 9 poles (not included)			CR 09 AD2	"44.27"
for 2 D-SUB inserts 15 poles (not included)			CR 15 AD2	"44.27"
for 2 D-SUB inserts 25 poles (not included)			CR 25 AD2	"57.27"
for 2 D-SUB inserts 37 poles (not included)			CR 37 AD2	"77.27"
for 2 D-SUB inserts 50 poles (not included)			CR 50 AD2	"77.27"

Plates CR...AD, CR...AD1 and CR...AD2

For machinery or command equipment that need connection with programming and control electronic devices. The plate housings have notches for the rear insertion of cabled D-SUB inserts.

CR...AD

mounting on bulkhead housings and hoods
one-way mounting in bulkhead housings or hoods.

CR...AD1 and CR...AD2
mounting on bulkhead housings (Figure 1)

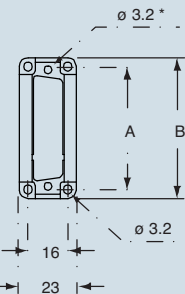
The D-SUB connector must be mounted on the side marked with the letter "A"

mounting on hoods (Figure 2)

The D-SUB connector must be mounted on the side marked with the letter "T"

dimensions in mm

CR...AD

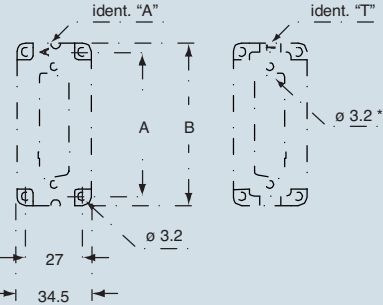


* For passing screws type M3

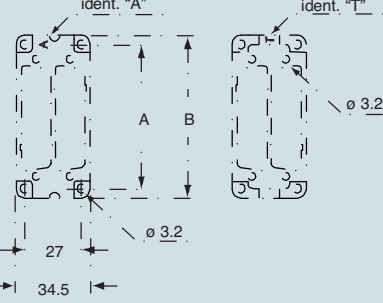
the electrical continuity is guaranteed only if mounted in our enclosures.

dimensions in mm

CR...AD1



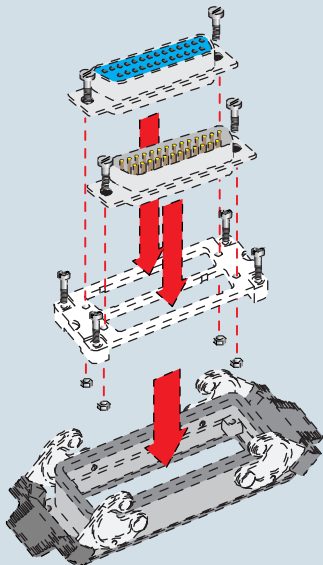
CR...AD2



* For passing screws type M3

part No.	A	B
CR 09 AD	49.5	56.5
CR 15 AD	49.5	56.5
CR 25 AD	49.5	56.5
CR 37 AD	66	73.5
CR 50 AD	66	73.5

part No.	A	B
CR 09 AD1 / 2	44	51.5
CR 15 AD1 / 2	44	51.5
CR 25 AD1 / 2	57	64.5
CR 37 AD1 / 2	77.5	85
CR 50 AD1 / 2	77.5	85



dimensions shown are not binding
and may be changed without notice

enclosures *) :
size "104.62" page:

C-TYPE IP65/IP66 248

*) normally bulkhead type

kit for control equipment
plate only



kit for control equipment
plate with enclosure



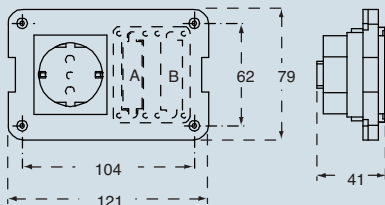
description	part No.	for enclosure	part No.
-------------	----------	---------------	----------

with Schuko® socket 16A and 2 seats for: CR 09 AD, CR 15 AD, CR 25 AD plates	SDS	CHI 48 LS	
---	-----	-----------	--

with Schuko® socket 16A and 2 seats for: CR 09 AD, CR 15 AD, CR 25 AD plates			CHSDS
---	--	--	-------

Kit for control equipment
For machinery or command equipment that need connection with programming and control electronic devices.
The kit includes the Schuko® socket and 2 seats for the CR...AD plates (not included) for D-SUB inserts (not included).
Personal computers, notebooks or printers can be power supplied using a 16A socket.
Monitors, printers and other peripheral devices may be interfaced using D-SUB connectors

dimensions in mm



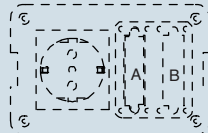
dimensions in mm



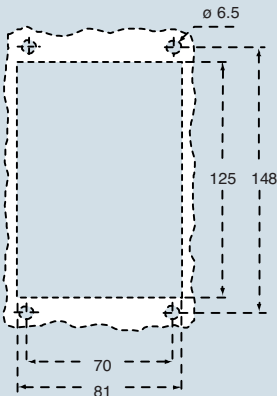
CR...AD plates usable	
part No.	
CR 09 AD	for 1 D-SUB insert 9 poles (not included)
CR 15 AD	for 1 D-SUB insert 15 poles (not included)
CR 25 AD	for 1 D-SUB insert 25 poles (not included)

Closed seat "A" for use with one insert only.
The closing is achieved by means of a plastic membrane that can easily be removed if the second seat is required.

CR.. AD plates to be ordered separately



housing panel cut-out in mm



dimensions shown are not binding
and may be changed without notice



enclosures:

- size “44.27” from page 218
- size “57.27” from page 222
- size “77.27” from page 228
- size “104.27” from page 236

24 pole closure or reduction plate



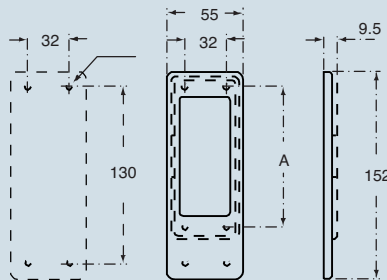
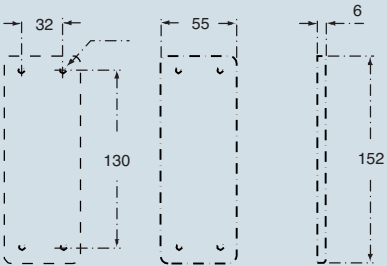
extraction tool for MIXO BUS connectors



description	part No.	part No.
in autoextinguishing thermoplastic resin with gasket in vinyl-nitrile elastomer	CRH 24	
in self-extinguishing thermoplastic resin with gasket in vinyl-nitrile elastomer - for bulkhead mounting housings * size “44.27” - for bulkhead mounting housings * size “57.27” - for bulkhead mounting housings * size “77.27” - for bulkhead mounting housings * size “104.27”	CRZ 06 CRZ 10 CRZ 16 CRZ 24	
for the extraction of the BUS shielded connectors from the MIXO BUS insert		CX BES

* Cannot be used with T-TYPE series and IP68 series

dimensions in mm



CRZ	A
06	70
10	83
16	103
24	130

dimensions shown are not binding
and may be changed without notice