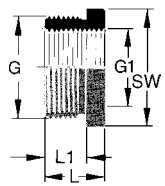
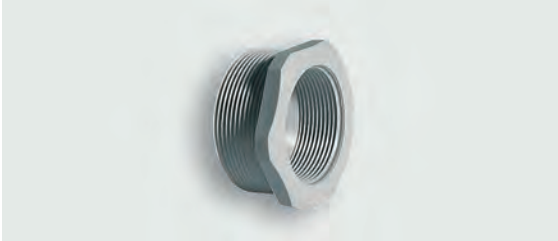


Cable fittings and accessories

Plastic accessory reducing ring RR form 1, metric



Properties

- - metric -
- - Form 1 -
- Reducing ring from plastic with large outer thread and small inner thread

Design

- Material Polyamide PA 6 GF 30
- Colour Grey RAL 7035
- other colours upon request

Part-No.	Type	G	G1	SW mm	L mm	L 1 mm	weight approx. kg/100 piece	PU piece
RR-PA metric								
600550	RR-PA M 20/M 12	M 20x1.5	M 12x1.5	24	12.0	8.0	0.39	100
600551	RR-PA M 20/M 16	M 20x1.5	M 16x1.5	24	12.0	8.0	0.26	100
600552	RR-PA M 25/M 12	M 25x1.5	M 12x1.5	29	14.0	8.0	0.70	100
600553	RR-PA M 25/M 16	M 25x1.5	M 16x1.5	29	14.0	8.0	0.67	100
600554	RR-PA M 25/M 20	M 25x1.5	M 20x1.5	29	14.0	8.0	0.50	50
600555	RR-PA M 32/M 12	M 32x1.5	M 12x1.5	36	16.0	10.0	1.06	50
600556	RR-PA M 32/M 16	M 32x1.5	M 16x1.5	36	16.0	10.0	1.06	50
600557	RR-PA M 32/M 20	M 32x1.5	M 20x1.5	36	16.0	10.0	1.20	50
600558	RR-PA M 32/M 25	M 32x1.5	M 25x1.5	36	16.0	10.0	0.88	50
600559	RR-PA M 40/M 16	M 40x1.5	M 16x1.5	46	16.0	10.0	1.59	50
600560	RR-PA M 40/M 20	M 40x1.5	M 20x1.5	46	16.0	10.0	1.68	50
600561	RR-PA M 40/M 25	M 40x1.5	M 25x1.5	46	16.0	10.0	1.36	50
600562	RR-PA M 40/M 32	M 40x1.5	M 32x1.5	46	16.0	10.0	1.35	50
600563	RR-PA M 50/M 20	M 50x1.5	M 20x1.5	55	18.0	12.0	2.15	25
600564	RR-PA M 50/M 25	M 50x1.5	M 25x1.5	55	18.0	12.0	2.16	25
600565	RR-PA M 50/M 32	M 50x1.5	M 32x1.5	55	18.0	12.0	2.06	25
600566	RR-PA M 50/M 40	M 50x1.5	M 40x1.5	55	18.0	12.0	1.97	25
600567	RR-PA M 63/M 25	M 63x1.5	M 25x1.5	68	18.0	12.0	2.65	25
600568	RR-PA M 63/M 32	M 63x1.5	M 32x1.5	68	18.0	12.0	2.95	25
600569	RR-PA M 63/M 40	M 63x1.5	M 40x1.5	68	18.0	12.0	3.08	25
600570	RR-PA M 63/M 50	M 63x1.5	M 50x1.5	68	18.0	12.0	3.05	25

Cable fittings and accessories

Plastic accessory Blank plug BL

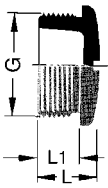


Properties

- Blank plug according to DIN 46320

Design

- Material Polyamide PA 6 or polystyrene SB
- Colour grey RAL 7035
- other colours upon request



Part-No.	Type	G	L mm	L 1 mm	weight approx. kg/100 piece	PU piece
BL metric PA						
600870	BL M 12	M 12x1.5	8.0	6.0	0.05	100
600871	BL M 16	M 16x1.5	9.0	6.0	0.09	100
600872	BL M 20	M 20x1.5	9.0	6.0	0.19	100
600873	BL M 25	M 25x1.5	10.5	7.0	0.20	100
600874	BL M 32	M 32x1.5	12.0	8.0	0.48	100
600875	BL M 40	M 40x1.5	13.0	9.0	0.66	50
600876	BL M 50	M 50x1.5	14.0	10.0	1.57	25
600877	BL M 63	M 63x1.5	17.0	12.0	2.26	25
BL PG PA						
601490	BL PG 7	PG 7	8.0	6.0	0.07	100
601491	BL PG 9	PG 9	9.0	6.0	0.13	100
601492	BL PG 11	PG 11	9.0	6.0	0.16	100
601493	BL PG 13,5	PG 13.5	9.5	6.0	0.20	100
601494	BL PG 16	PG 16	9.5	6.0	0.25	100
601495	BL PG 21	PG 21	11.0	8.0	0.38	100
601496	BL PG 29	PG 29	12.0	8.0	0.72	50
601497	BL PG 36	PG 36	15.0	10.0	1.15	25